

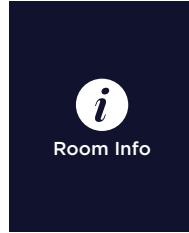
OATLANDS HOUSE

# REBECCA SUITE

FACT SHEET & FLOOR PLANS

OATLANDS HOUSE  
**Rebecca Suite**

**NAVARRA**  
EST 1973



Room Info



Room Specs

**CAPACITIES**



Dinner & Dance  
40 - 90



Banquet Dinner  
40 - 110



Cocktail Party  
60 - 140



Theatre Seating  
40 - 100

**FEATURES**

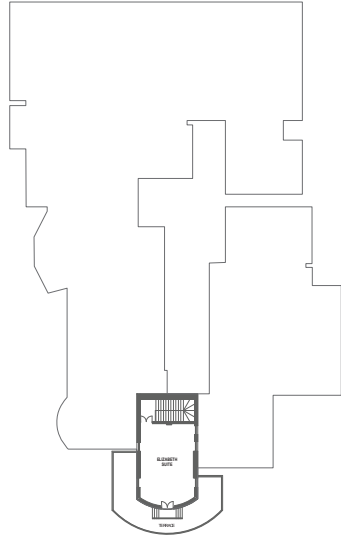
- Boutique event room with French charm
- Ornate embellishments
- Grand chandeliers
- Garden views of the Oatlands Chateau
- Wrap around outdoor terrace
- High vaulted ceilings and open plan
- Two original marble fireplaces
- Grand gilded mirrors
- Timber framed French doors

**CONTACT US**

- Oatlands House  
42 Bettington Road  
Oatlands, NSW 2117
- 02 9683 3355  
oatlandshouse@navarra.com.au  
navarra.com.au

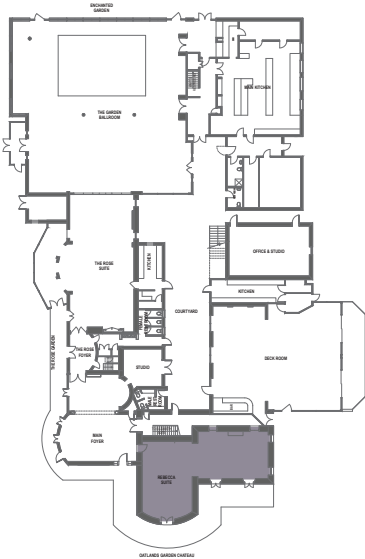
**VENUE MAP**

**LEVEL ONE**



**GROUND LEVEL**

- Rebecca Suite



**ROOM SPECS**

■ Ceiling Height  
 4.35 m

■ Floor Area  
 105 m<sup>2</sup>

■ Dance Area  
 Timber flooring  
 throughout



Room Info



Room Specs

**CAPACITIES**



Dinner & Dance  
 40 - 90



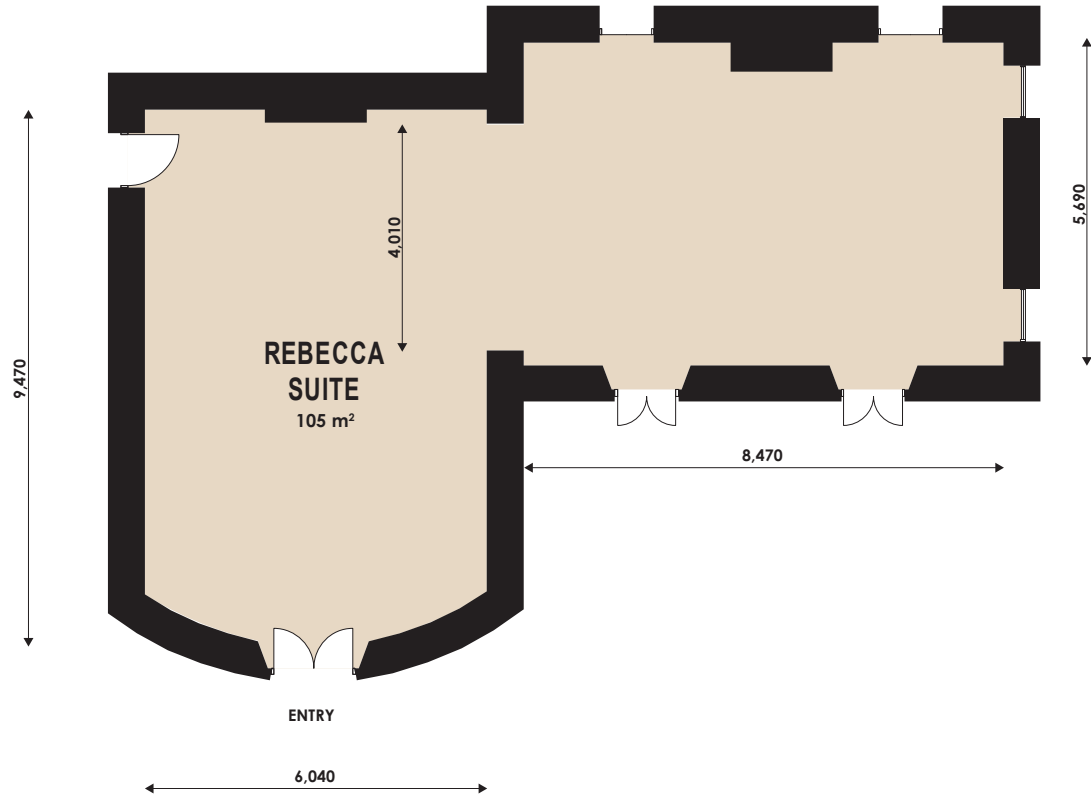
Banquet Dinner  
 40 - 110



Cocktail Party  
 60 - 140



Theatre Seating  
 40 - 100



OATLANDS HOUSE  
**Rebecca Suite**

**NAVARRA**

EST 1973

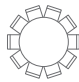


**PAX PER TABLE**

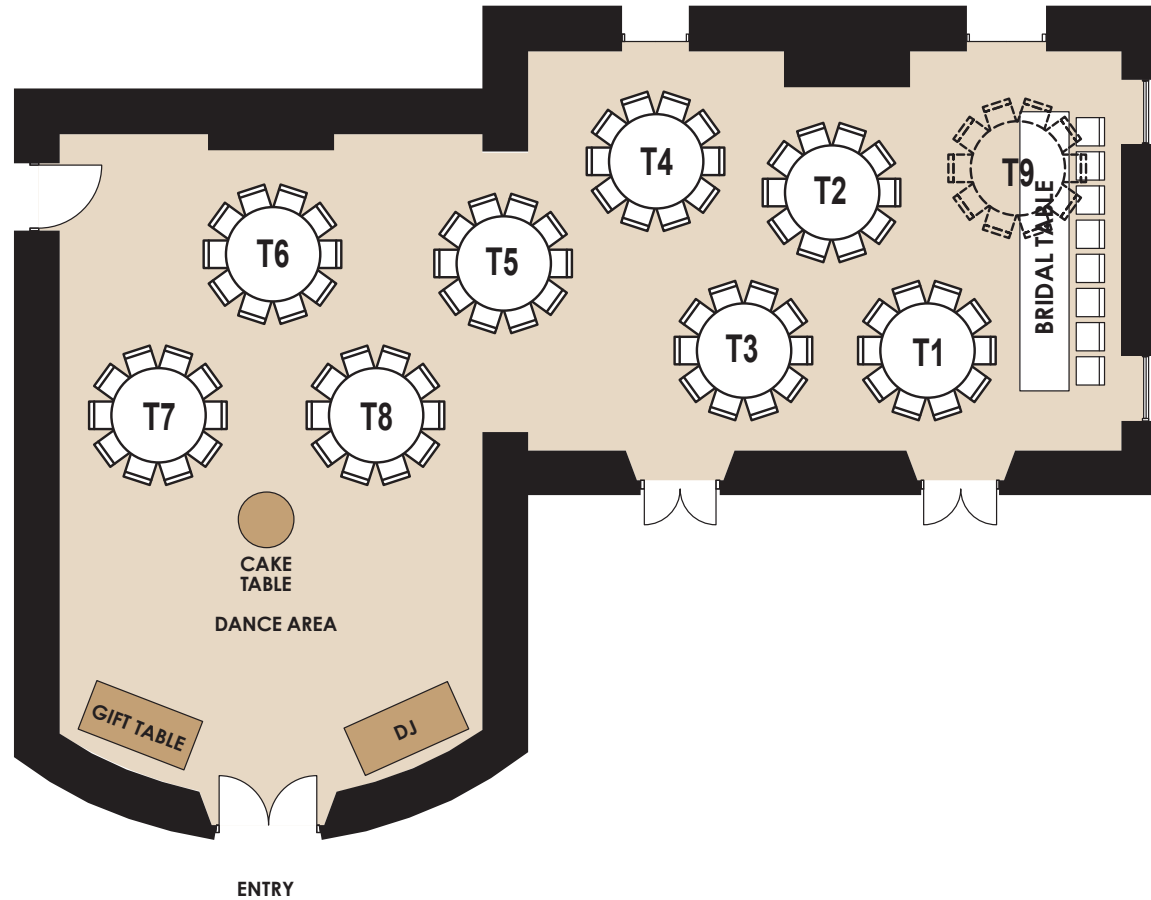
- Round Tables  
8 Min - 10 Max
- VIP/Bridal Table  
8 Max

**SUITABLE FOR**

- Weddings
- Gala Dinners

**LEGEND**

-  Round Table
-  Don't use unless necessary
-  Alternative arrangement using Round Table instead



Room Info



Room Specs

**CAPACITIES**



Dinner & Dance  
40 - 90



Banquet Dinner  
40 - 110



Cocktail Party  
60 - 140



Theatre Seating  
40 - 100

**FOR OFFICIAL USE**

Event Name

Event Date

Please indicate on your floorplan additional requirements eg. band, photobooth, etc. These are subject to approval by your event stylist and coordinator.

OATLANDS HOUSE  
**Rebecca Suite**

**NAVARRA**

EST 1973




**PAX PER TABLE**

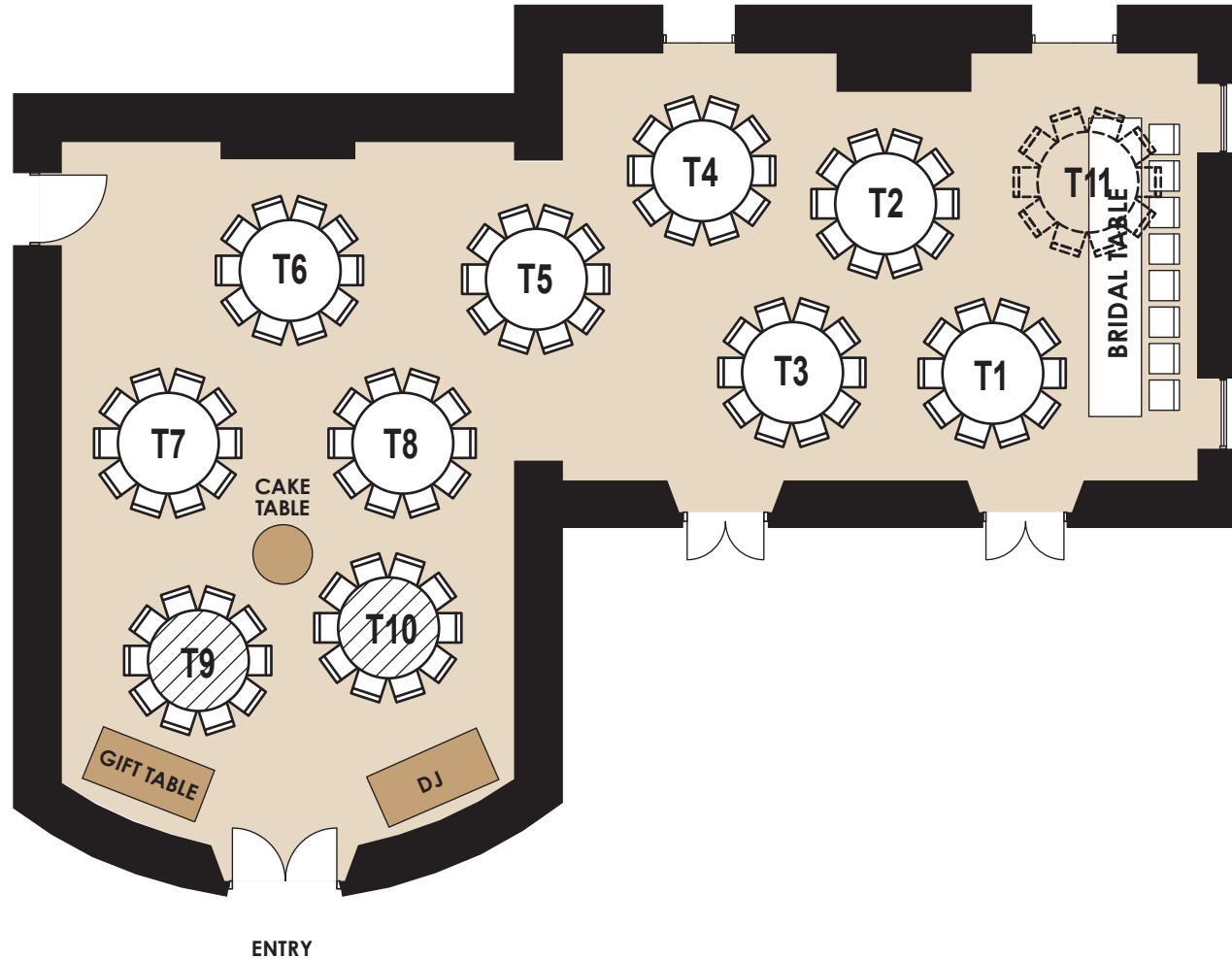
- Round Tables  
8 Min - 10 Max

**SUITABLE FOR**

- Corporate Events

**LEGEND**

-  Round Table
-  Don't use unless necessary
-  Alternative arrangement using Round Table instead



Room Info



Room Specs

**CAPACITIES**



Dinner & Dance  
40 - 90



Banquet Dinner  
40 - 110



Cocktail Party  
60 - 140



Theatre Seating  
40 - 100

**FOR OFFICIAL USE**

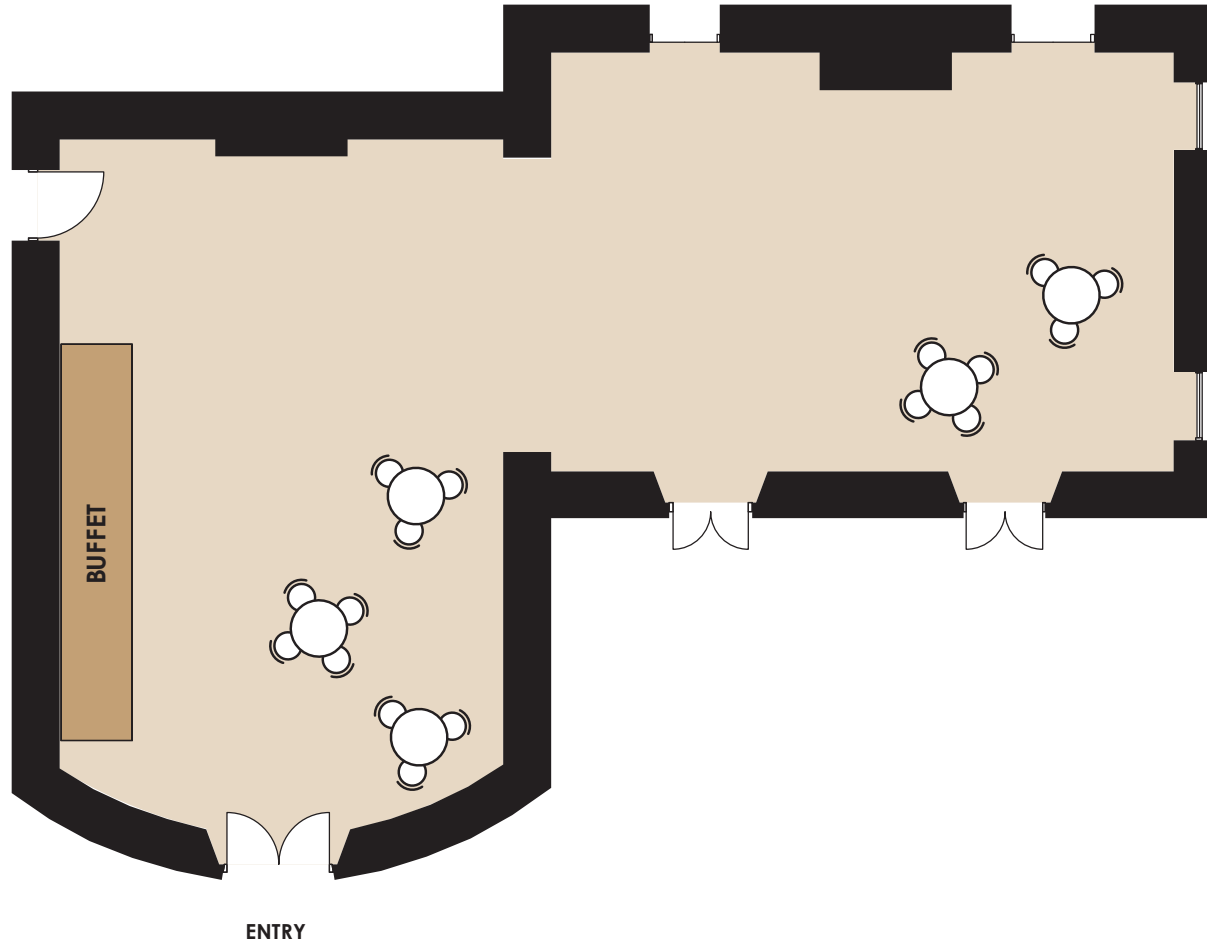
Event Name

Event Date

Please indicate on your floorplan additional requirements eg. band, photobooth, etc. These are subject to approval by your event stylist and coordinator.

OATLANDS HOUSE  
**Rebecca Suite**

**NAVARRA**  
 EST 1973



Room Info



Room Specs

**CAPACITIES**



Dinner & Dance  
 40 - 90



Banquet Dinner  
 40 - 110



Cocktail Party  
 60 - 140



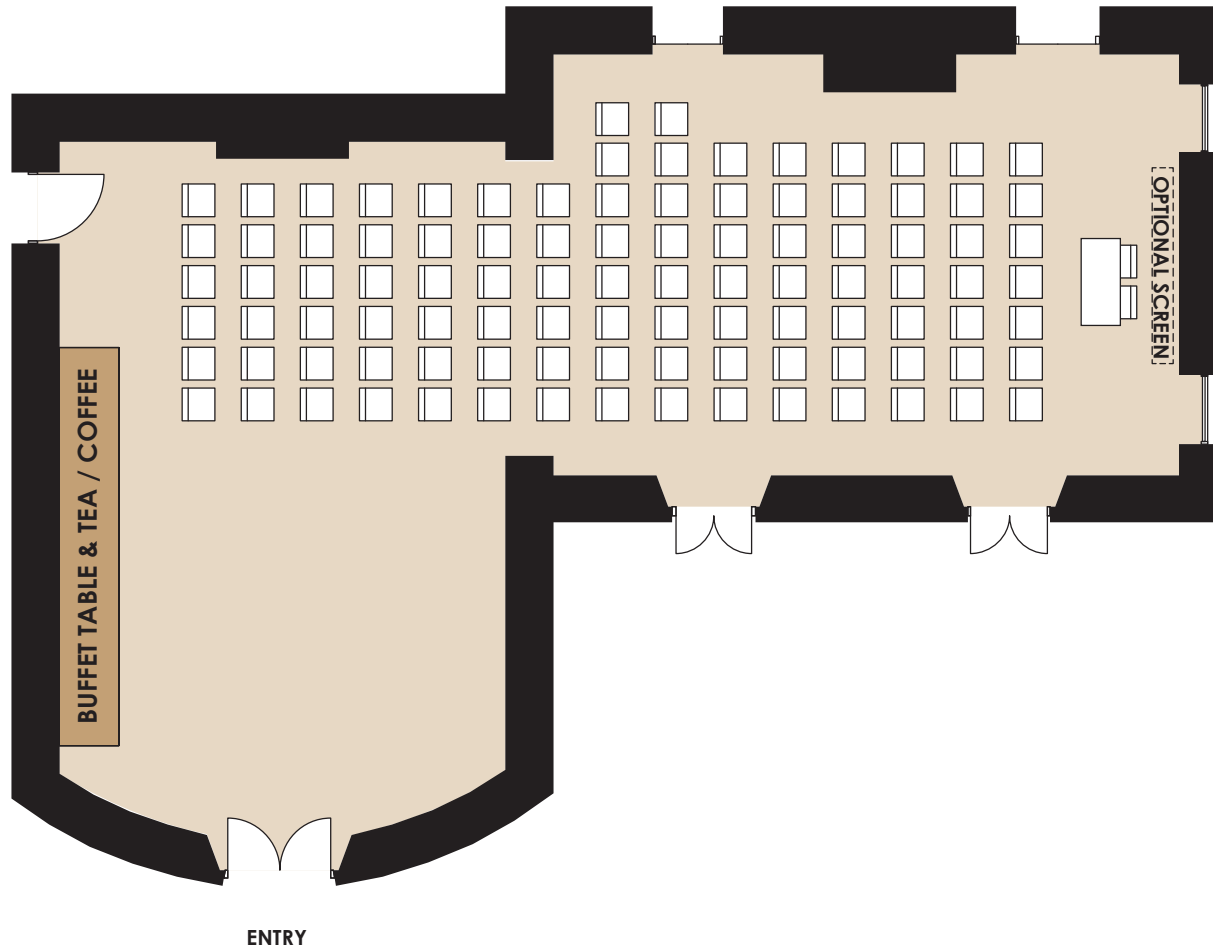
Theatre Seating  
 40 - 100

**FOR OFFICIAL USE**

Event Name

Event Date

Please indicate on your floorplan additional requirements eg. band, photobooth, etc. These are subject to approval by your event stylist and coordinator.



Room Info



Room Specs

**CAPACITIES**



Dinner & Dance  
 40 - 90



Banquet Dinner  
 40 - 110



Cocktail Party  
 60 - 140



Theatre Seating  
 40 - 100

**FOR OFFICIAL USE**

Event Name

Event Date

Please indicate on your floorplan additional requirements eg. band, photobooth, etc. These are subject to approval by your event stylist and coordinator.