

MONTAGE

MONTAGE BALLROOM

FACT SHEET & FLOOR PLANS

Montage Ballroom



Room Info



Room Specs



AV Specs

CAPACITIES



Dinner & Dance
680 - 1500



Banquet Dinner
680 - 1580



Cocktail Party
1020 - 1630



Theatre Seating
680 - 1550

FEATURES

- 180° water views and two outdoor terraces
- Welcome drinks area
- Grand style event room
- Vaulted ceilings and open plan
- Designer interiors and luxurious crystal chandeliers
- Large in-built dance floor

CONTACT US

- Montage
38 Frazer Street
Lilyfield, NSW 2040
- 02 9555 6099
montage@navarra.com.au
navarra.com.au

MONTAGE

Montage Ballroom

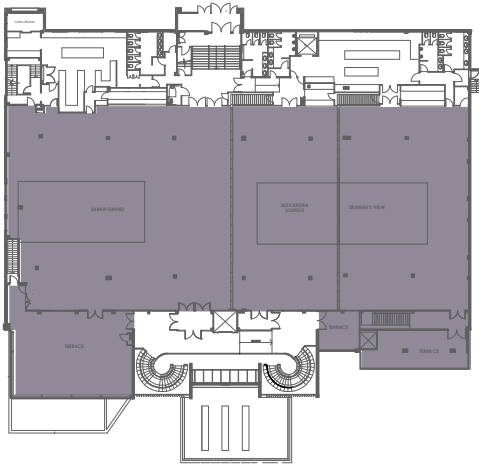
NAVARRA

EST 1973

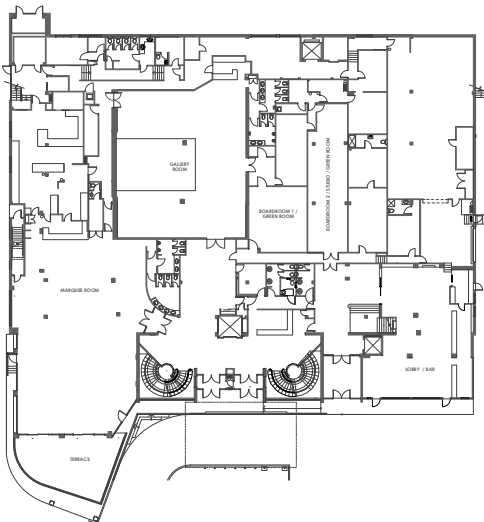
VENUE MAP

LEVEL ONE

- Montage Ballroom



GROUND LEVEL



ROOM SPECS

- Ceiling Height 3.60 - 4.70 m
- Floor Area 1299 m²
- Dance Floor Area 6.55 m x 14.70 m



Room Info



Room Specs



AV Specs

CAPACITIES



Dinner & Dance
680 - 1500



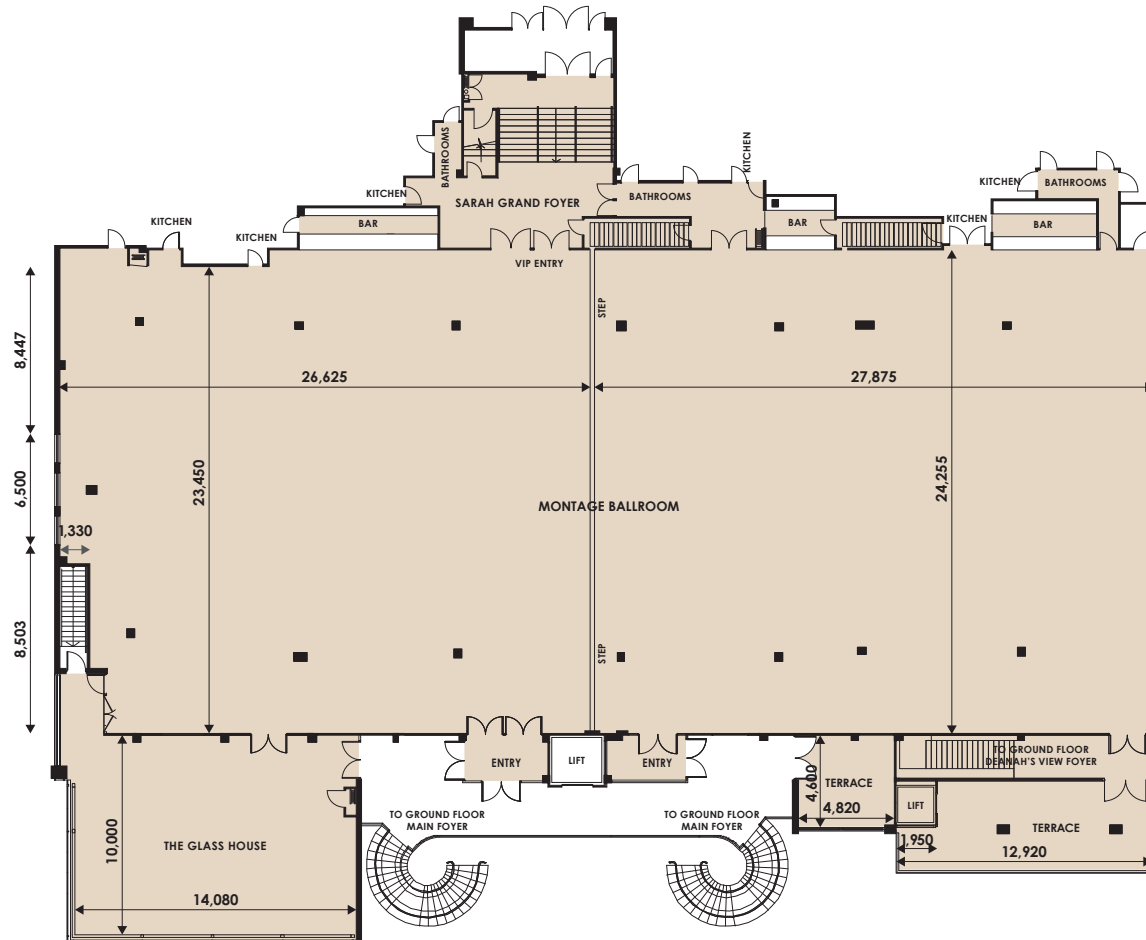
Banquet Dinner
680 - 1580



Cocktail Party
1020 - 1630









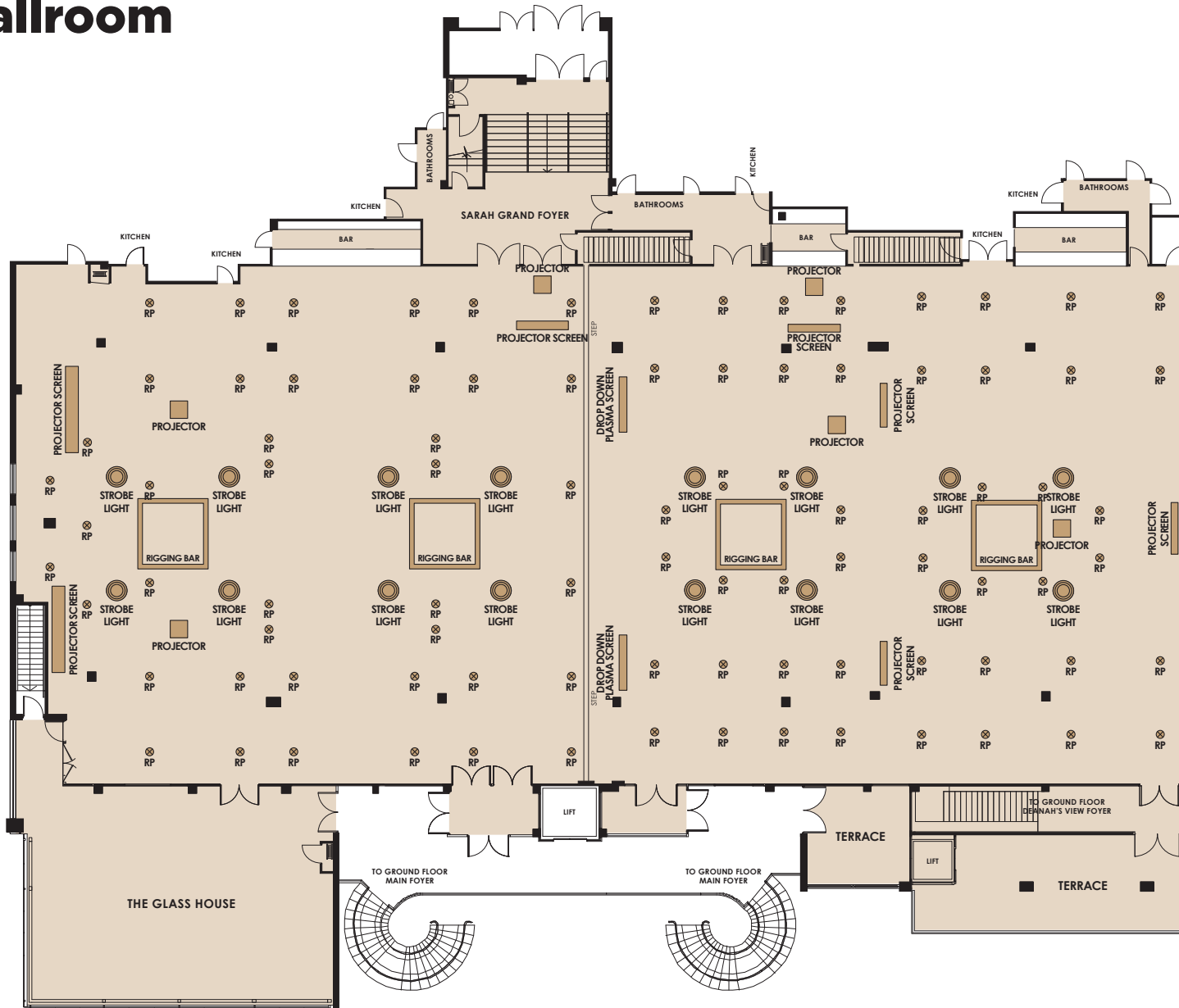
Theatre Seating
680 - 1550



Montage Ballroom

LEGEND

-  Strobe Light
-  Speakers
-  RP Light
-  Rigging Bar
-  Screens
-  Projectors



Room Info



Room Specs



AV Specs

CAPACITIES



Dinner & Dance
680 - 1500



Banquet Dinner
680 - 1580



Cocktail Party
1020 - 1630



Theatre Seating
680 - 1550

Montage Ballroom

PAX PER TABLE

■ Round Tables
8 Min - 10 Max

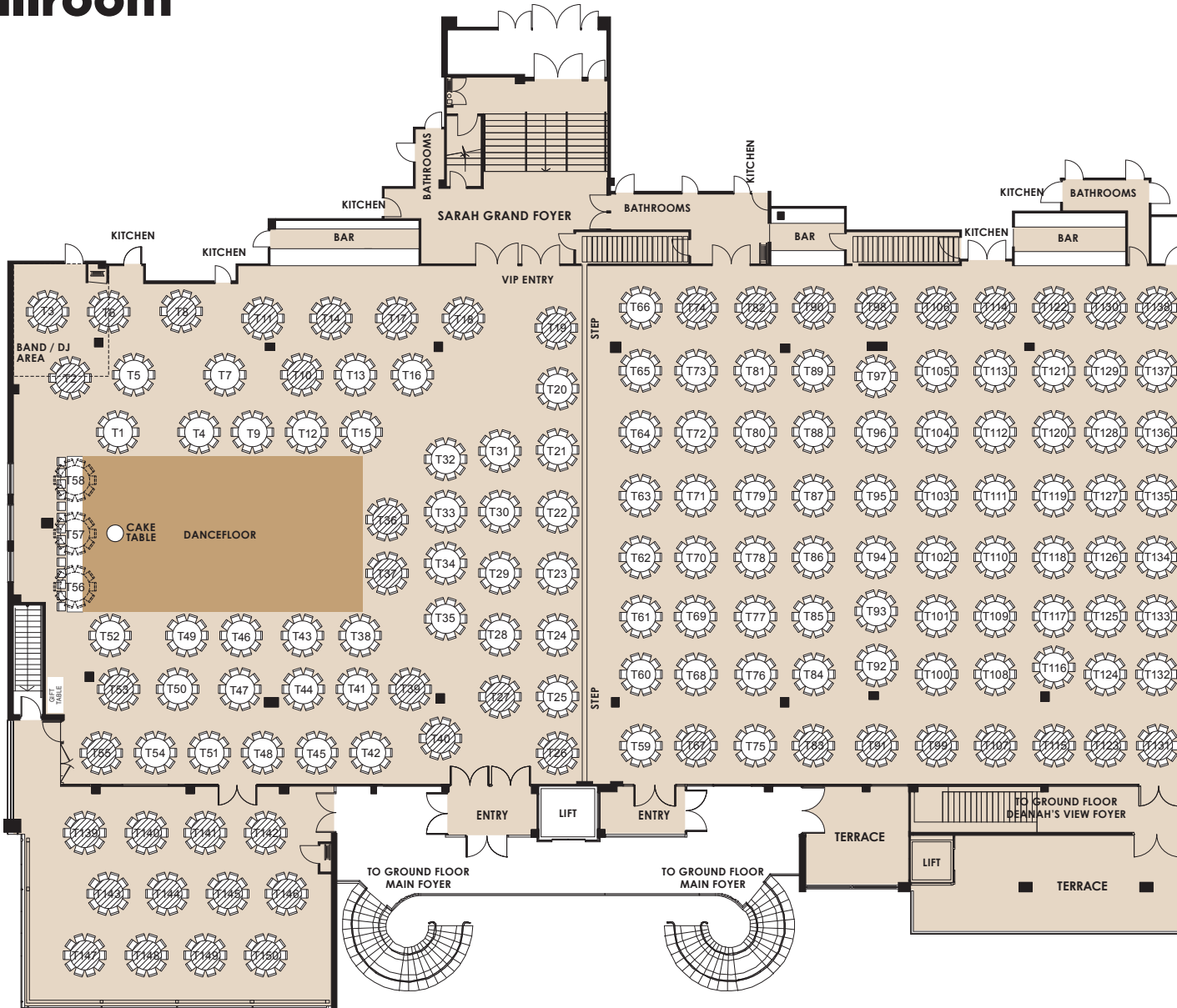
■ VIP/Bridal Table
14 Max

SUITABLE FOR

- Weddings
- Gala Dinners

LEGEND

- Round Table
- Don't use unless necessary
- Alternative arrangement using Round Table instead



Room Info



Room Specs



AV Specs

CAPACITIES



Dinner & Dance
680 - 1500



Banquet Dinner
680 - 1580



Cocktail Party
1020 - 1630



Theatre Seating
680 - 1550

FOR OFFICIAL USE

Event Name

Event Date

Please indicate on your floorplan additional requirements eg. band, photobooth, etc. These are subject to approval by your event stylist and coordinator.

Montage Ballroom




PAX PER TABLE

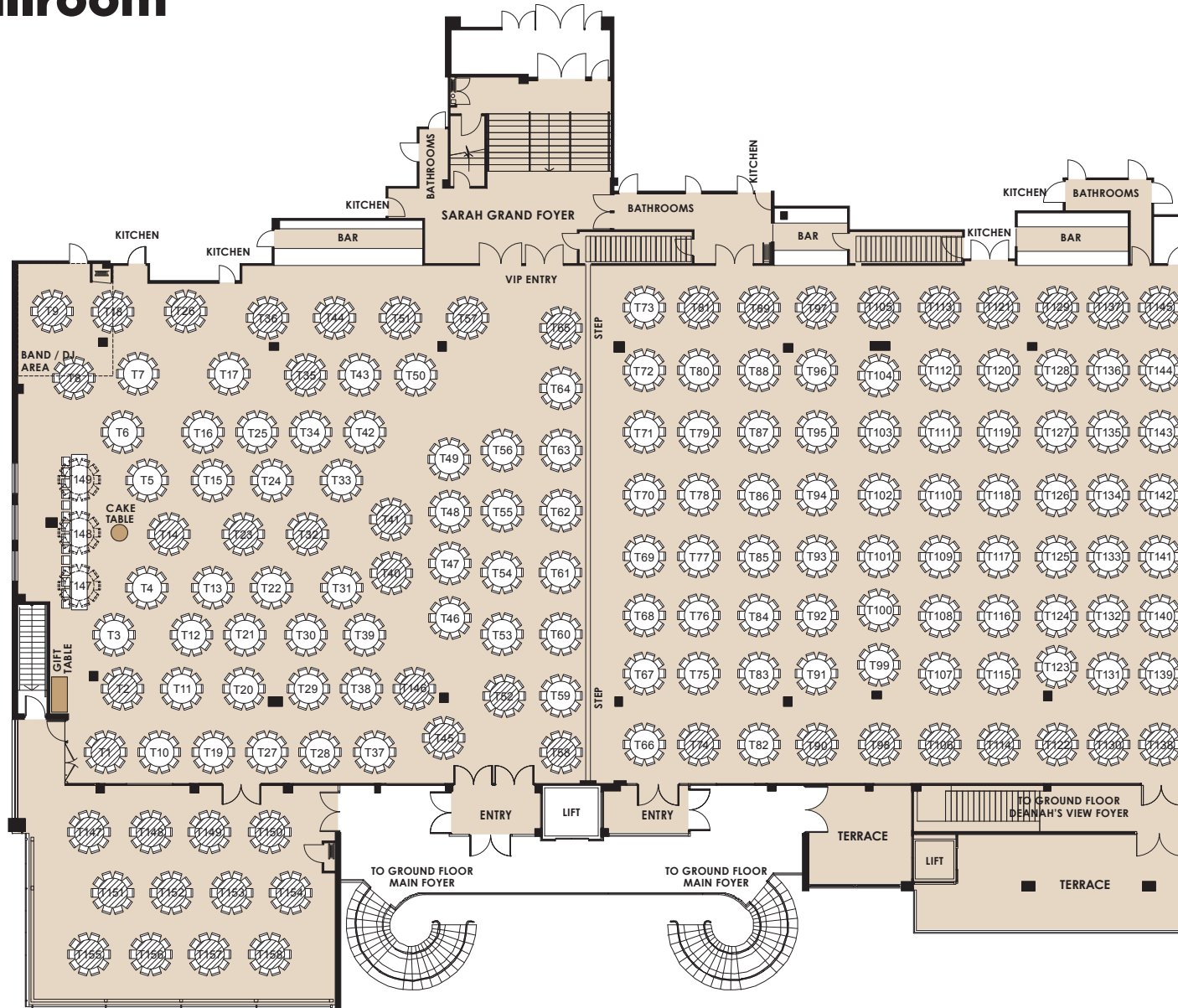
- Round Tables
8 Min - 10 Max

SUITABLE FOR

- Corporate Events

LEGEND

-  Round Table
-  Don't use unless necessary
-  Alternative arrangement using Round Table instead



Room Info



Room Specs



AV Specs

CAPACITIES



Dinner & Dance
680 - 1500



Banquet Dinner
680 - 1580



Cocktail Party
1020 - 1630



Theatre Seating
680 - 1550

FOR OFFICIAL USE

Event Name

Event Date

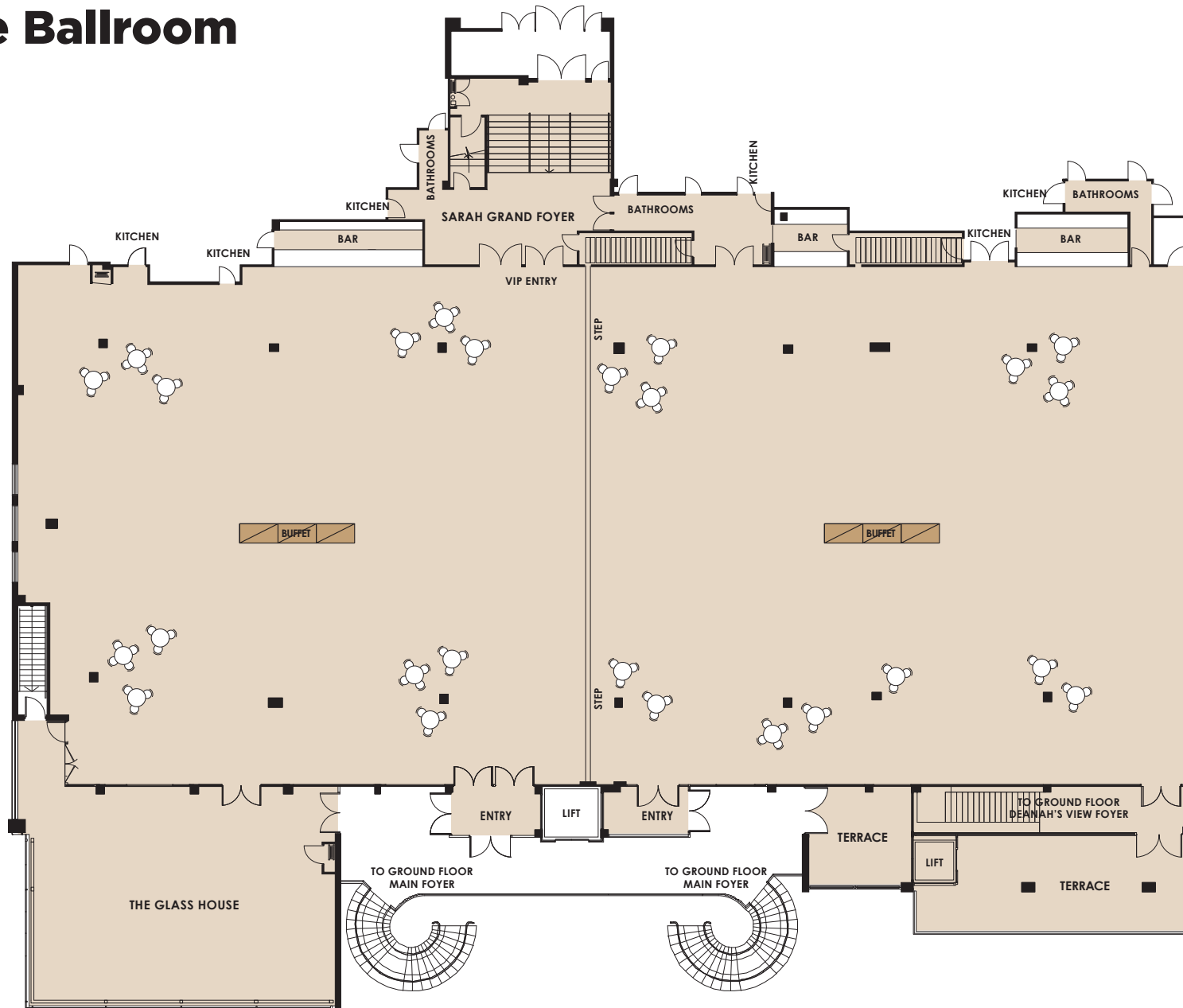
Please indicate on your floorplan additional requirements eg. band, photobooth, etc. These are subject to approval by your event stylist and coordinator.

MONTAGE

Montage Ballroom

NAVARRA

EST 1973



Room Info



Room Specs



AV Specs

CAPACITIES



Dinner & Dance
680 - 1500



Banquet Dinner
680 - 1580



Cocktail Party
1020 - 1630



Theatre Seating
680 - 1550

FOR OFFICIAL USE

Event Name

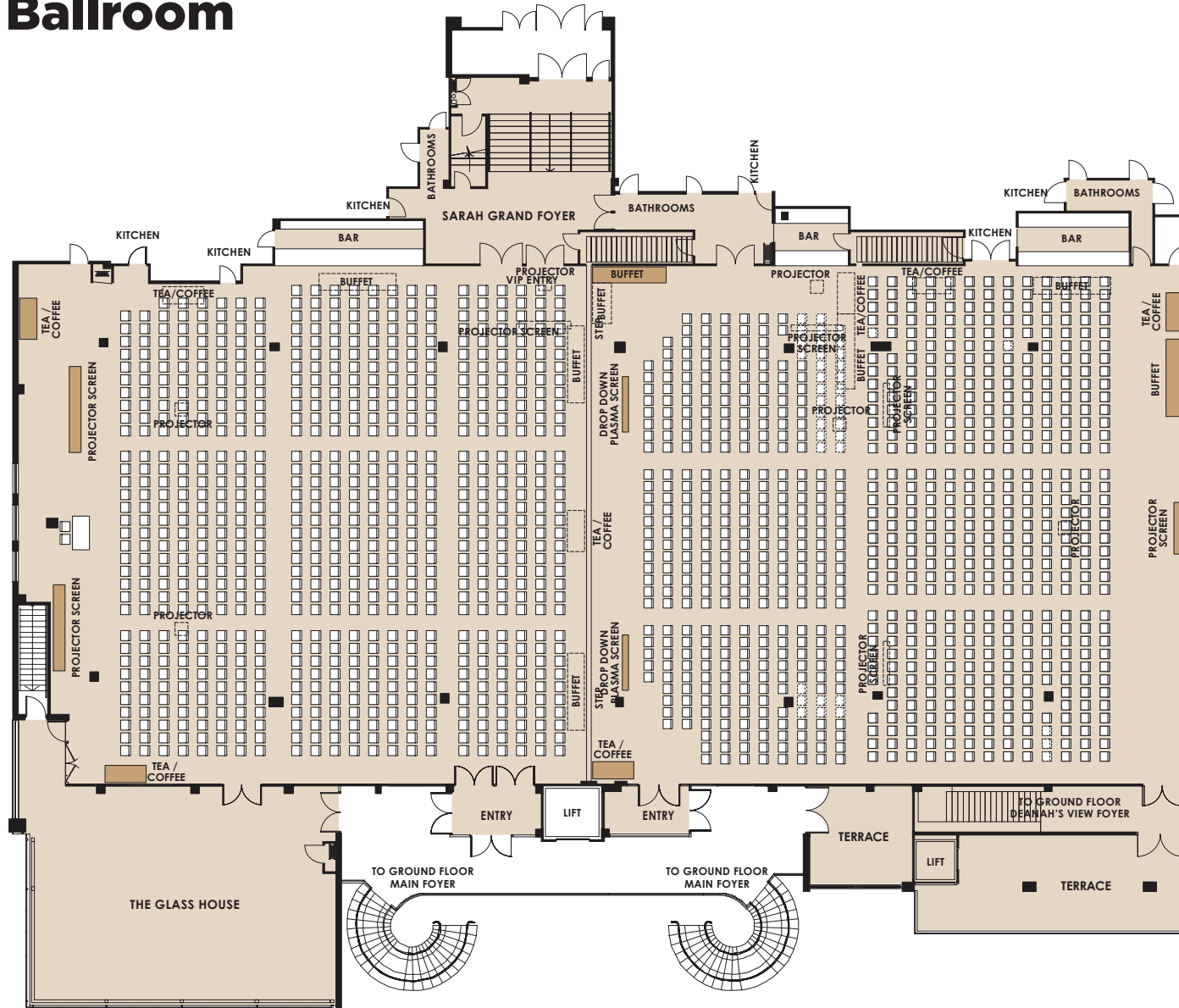
Event Date

Please indicate on your floorplan additional requirements eg. band, photobooth, etc. These are subject to approval by your event stylist and coordinator.

MONTAGE
Montage Ballroom

NAVARRA

EST 1973



Room Info



Room Specs



AV Specs

CAPACITIES



Dinner & Dance
 680 - 1500



Banquet Dinner
 680 - 1580



Cocktail Party
 1020 - 1630



Theatre Seating
 680 - 1550

FOR OFFICIAL USE

Event Name

Event Date

Please indicate on your floorplan additional requirements eg. band, photobooth, etc. These are subject to approval by your event stylist and coordinator.