

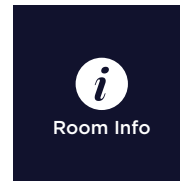
MONTAGE

THE MARQUEE

FACT SHEET & FLOOR PLANS

MONTAGE
The Marquee

NAVARRA
EST 1973



Room Info



Room Specs



AV Specs

CAPACITIES


Dinner & Dance
120 - 330


Banquet Dinner
120 - 360


Cocktail Party
180 - 460


Theatre Seating
120 - 410

FEATURES

- Outdoor alfresco ambience
- Secluded terrace
- Luxurious chandeliers
- Floor to ceiling windows with natural light
- Designer interiors

CONTACT US

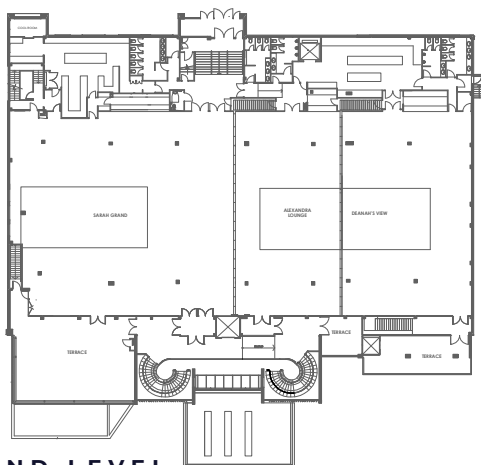
- Montage
38 Frazer Street
Lilyfield, NSW 2040
- 02 9555 6099
montage@navarra.com.au
navarra.com.au

MONTAGE
The Marquee

NAVARRA
EST 1973

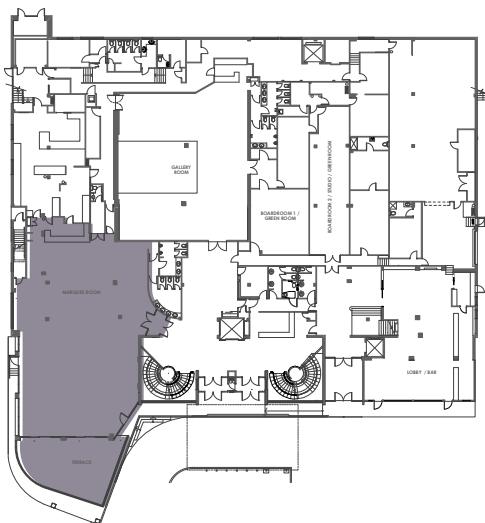
VENUE MAP

LEVEL ONE



GROUND LEVEL

■ The Marquee

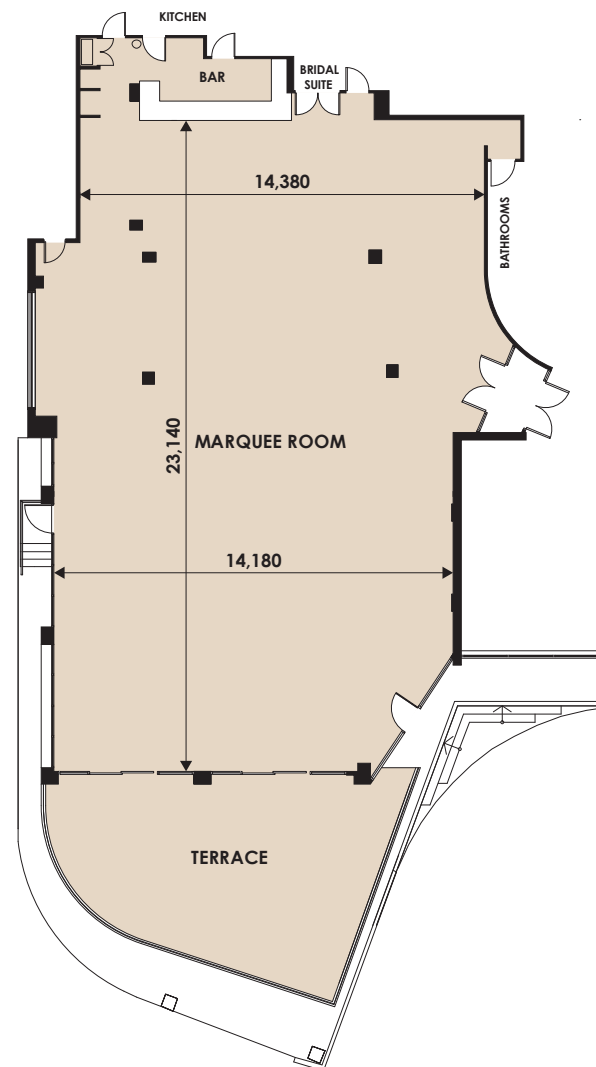


ROOM SPECS

■ Ceiling Height
3.30 m

■ Floor Area
341 m²

■ Dance Floor Area
5.00 m x 7.00 m



Room Info



Room Specs



AV Specs

CAPACITIES



Dinner & Dance
120 - 330



Banquet Dinner
120 - 360







Cocktail Party
180 - 460

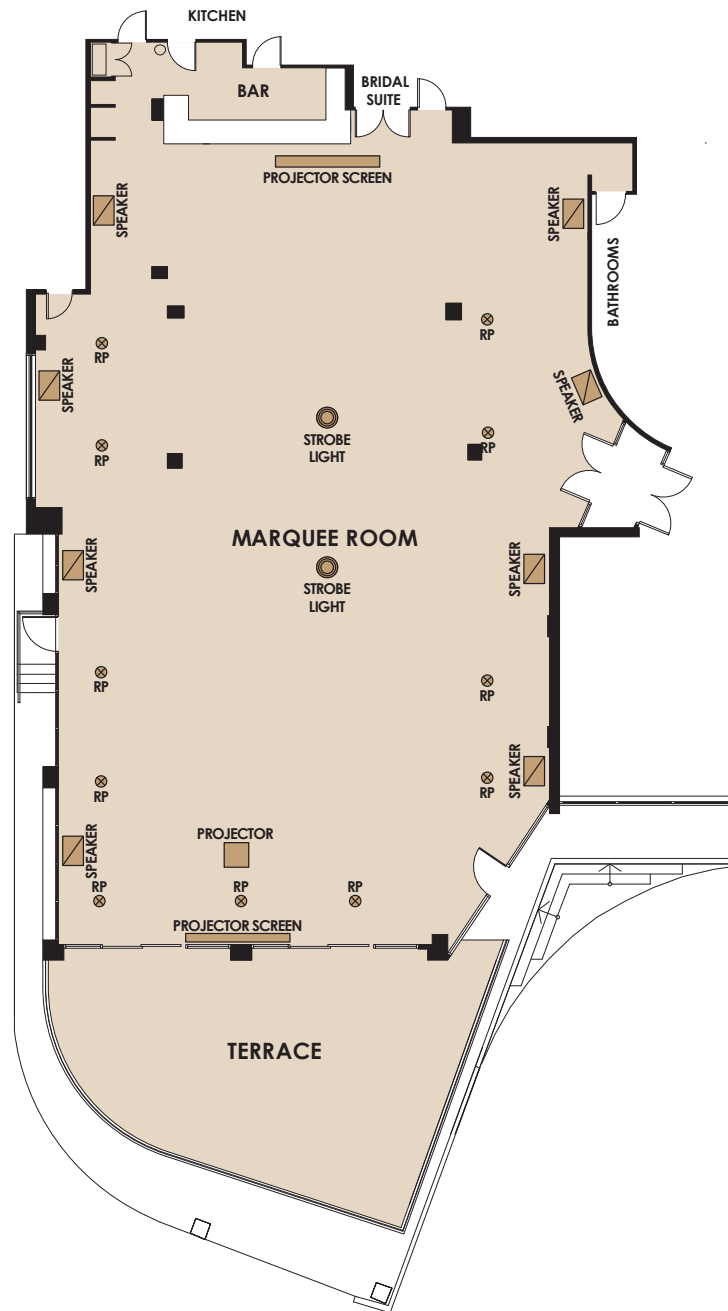


Theatre Seating
120 - 410

MONTAGE
The Marquee

LEGEND

-  Strobe Light
-  Speakers
-  RP Light
-  Screens
-  Projectors



NAVARRA

EST 1973



Room Info



Room Specs



AV Specs

CAPACITIES



Dinner & Dance
120 - 330



Banquet Dinner
120 - 360



Cocktail Party
180 - 460



Theatre Seating
120 - 410

MONTAGE
The Marquee

NAVARRA

EST 1973




PAX PER TABLE

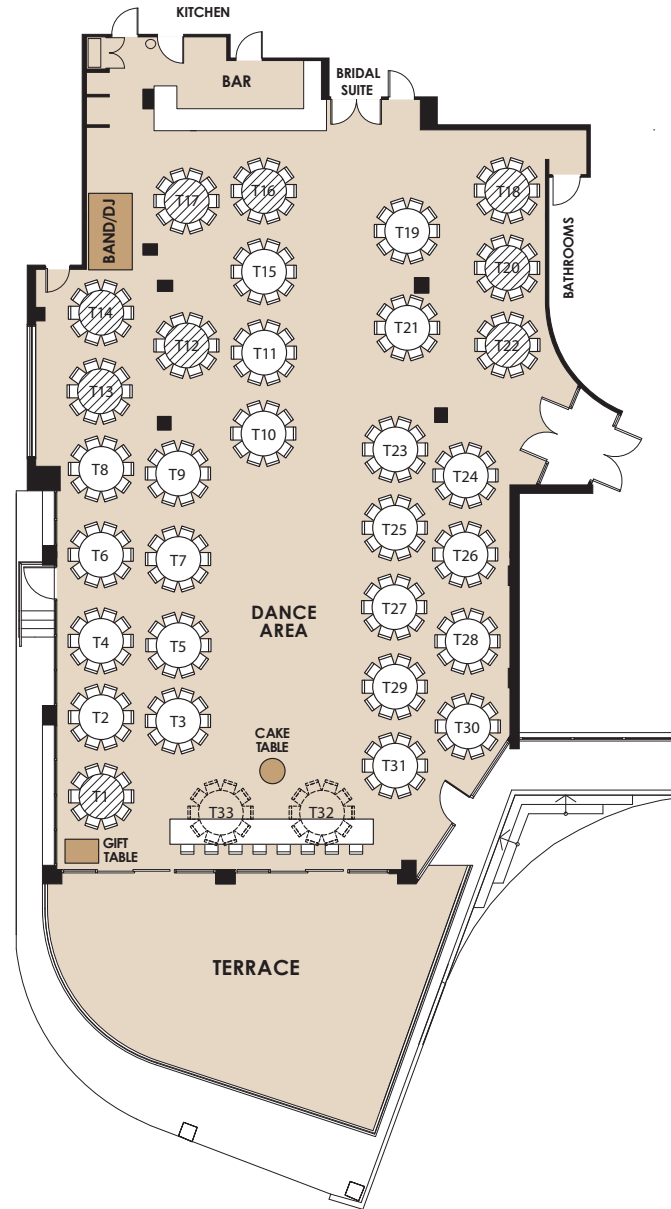
- Round Tables
8 Min - 10 Max
- VIP/Bridal Table
8 Max

SUITABLE FOR

- Weddings
- Gala Dinners

LEGEND

-  Round Table
-  Don't use unless necessary
-  Alternative arrangement using Round Table instead



Room Info



Room Specs



AV Specs

CAPACITIES



Dinner & Dance
120 - 330



Banquet Dinner
120 - 360



Cocktail Party
180 - 460



Theatre Seating
120 - 410

FOR OFFICIAL USE

Event Name

Event Date

Please indicate on your floorplan additional requirements eg. band, photobooth, etc. These are subject to approval by your event stylist and coordinator.

MONTAGE
The Marquee

NAVARRA

EST 1973




PAX PER TABLE

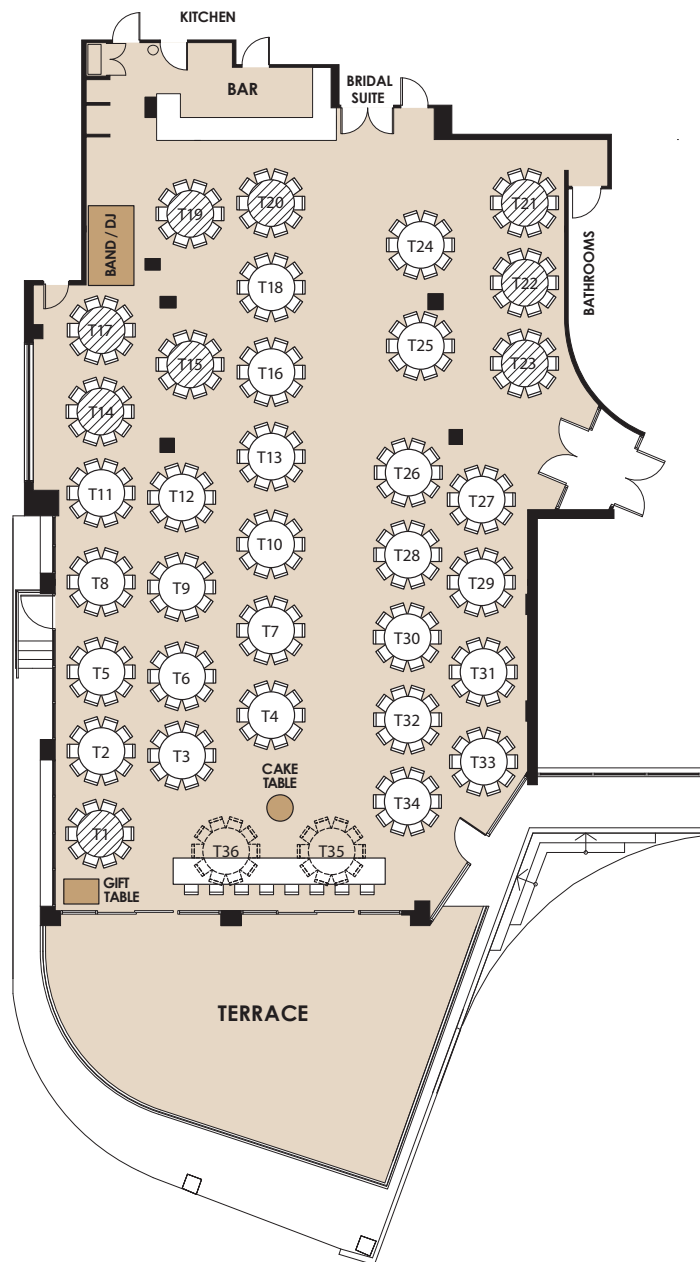
- Round Tables
8 Min - 10 Max

SUITABLE FOR

- Corporate Events

LEGEND

-  Round Table
-  Don't use unless necessary
-  Alternative arrangement using Round Table instead



Room Info



Room Specs



AV Specs

CAPACITIES



Dinner & Dance
120 - 330



Banquet Dinner
120 - 360



Cocktail Party
180 - 460



Theatre Seating
120 - 410

FOR OFFICIAL USE

Event Name

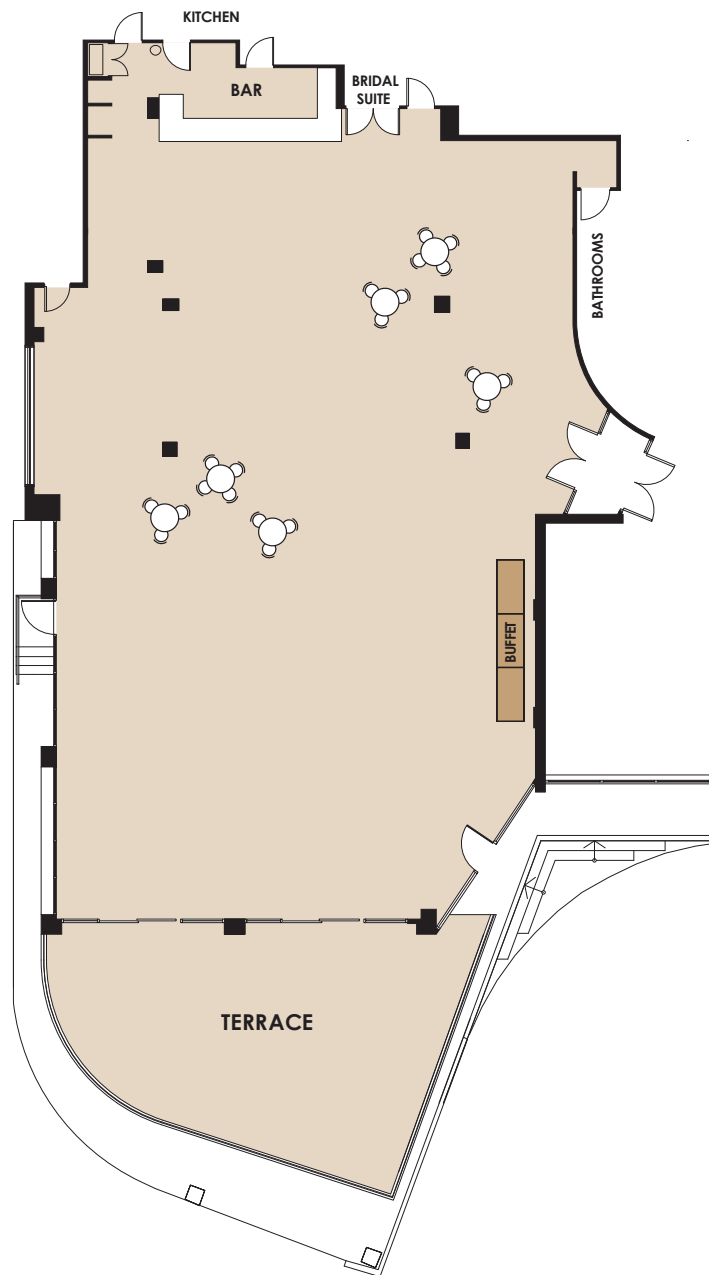
Event Date

Please indicate on your floorplan additional requirements eg. band, photobooth, etc. These are subject to approval by your event stylist and coordinator.

MONTAGE
The Marquee

NAVARRA

EST 1973



Room Info



Room Specs



AV Specs

CAPACITIES



Dinner & Dance
120 – 330



Banquet Dinner
120 – 360



Cocktail Party
180 – 460



Theatre Seating
120 – 410

FOR OFFICIAL USE

Event Name

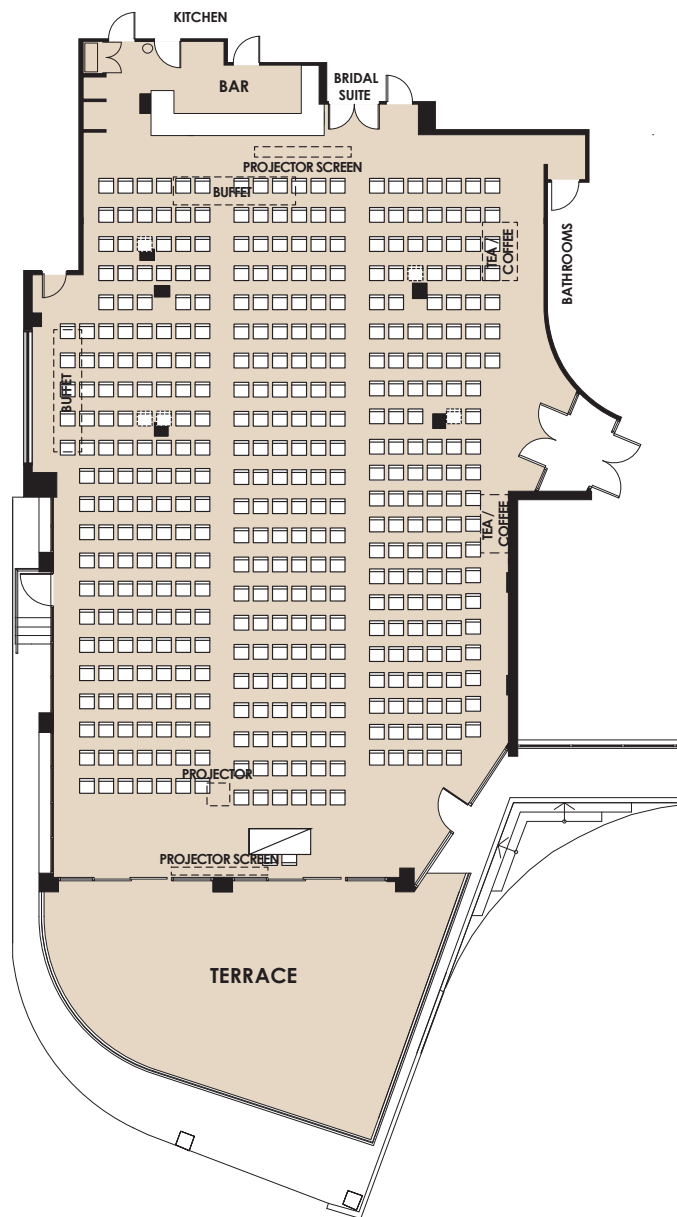
Event Date

Please indicate on your floorplan additional requirements eg. band, photobooth, etc. These are subject to approval by your event stylist and coordinator.

MONTAGE
The Marquee

NAVARRA

EST 1973



Room Info



Room Specs



AV Specs

CAPACITIES



Dinner & Dance
120 – 330



Banquet Dinner
120 – 360



Cocktail Party
180 – 460



Theatre Seating
120 – 410

FOR OFFICIAL USE

Event Name	Event Date
------------	------------

Please indicate on your floorplan additional requirements eg. band, photobooth, etc. These are subject to approval by your event stylist and coordinator.