

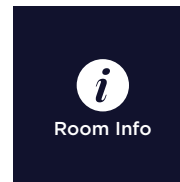
MONTAGE

THE GALLERY

FACT SHEET & FLOOR PLANS

MONTAGE
The Gallery

NAVARRA
EST 1973



Room Info



Room Specs



AV Specs

CAPACITIES


Dinner & Dance
120 - 250


Banquet Dinner
120 - 290


Cocktail Party
180 - 360


Theatre Seating
120 - 350

FEATURES

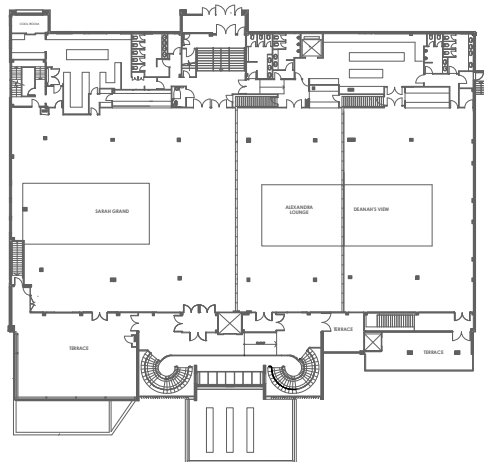
- Elegant styled event room with a New York charm
- Vaulted ceilings and designer interiors
- Welcome drinks area
- Foyer area for registration
- Large Mirrors
- In-built dance floor

CONTACT US

- Montage
38 Frazer Street
Lilyfield, NSW 2040
- 02 9555 6099
montage@navarra.com.au
navarra.com.au

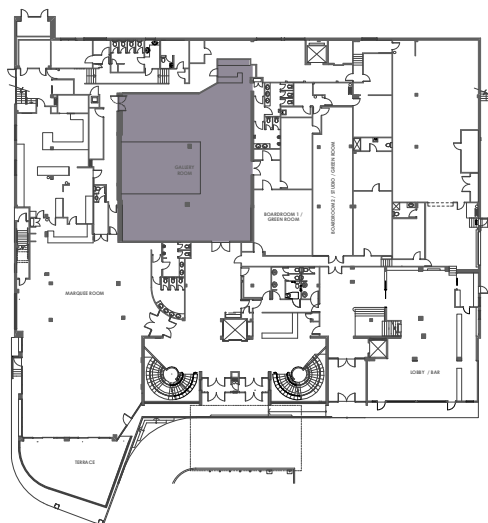
VENUE MAP

LEVEL ONE



GROUND LEVEL

- The Gallery



ROOM SPECS

- Ceiling Height 3.10 - 3.50 m
- Floor Area 274 m²
- Dance Floor Area 6.30 m x 6.80 m



Room Info



Room Specs



AV Specs

CAPACITIES



Dinner & Dance
120 - 250



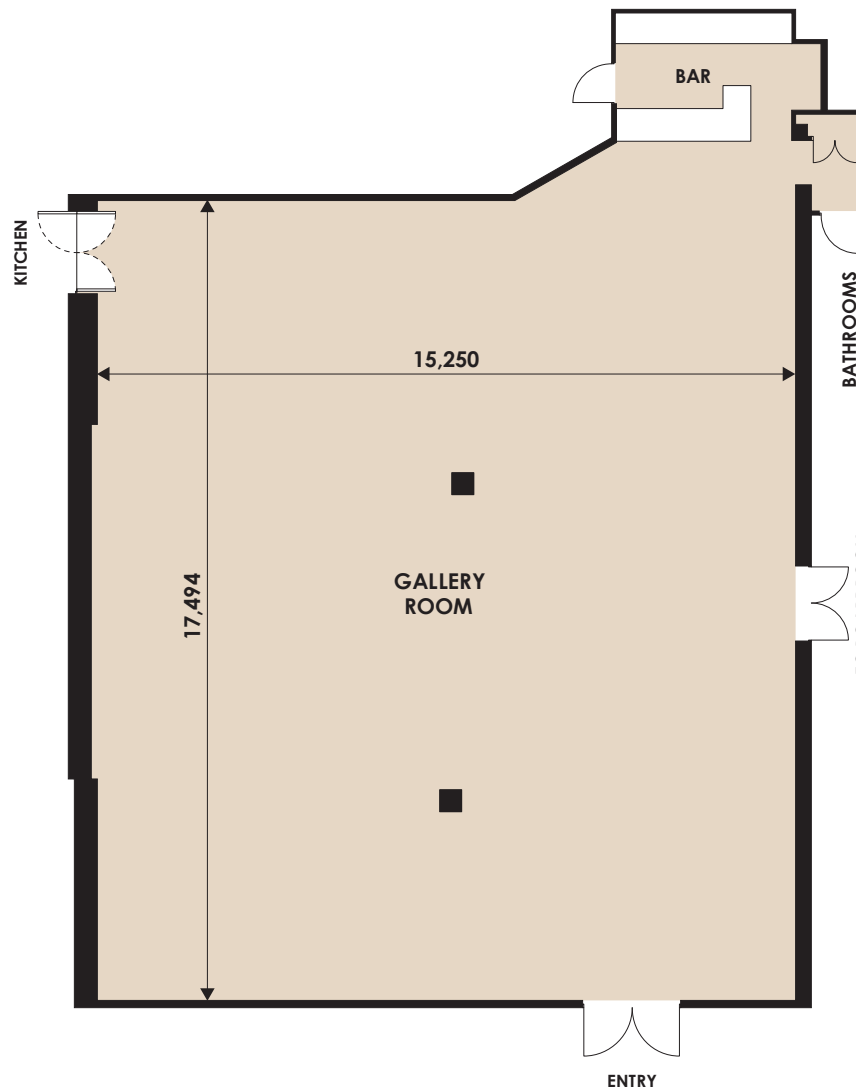
Banquet Dinner
120 - 290



Cocktail Party
180 - 360



Theatre Seating
120 - 350







MONTAGE
The Gallery

NAVARRA

EST 1973

LEGEND

-  Strobe Light
-  Speakers
-  RP Light
-  Screens
-  Projectors



Room Info



Room Specs



AV Specs

CAPACITIES



Dinner & Dance
120 - 250



Banquet Dinner
120 - 290



Cocktail Party
180 - 360



Theatre Seating
120 - 350

MONTAGE The Gallery

NAVARRA

EST 1973

PAX PER TABLE

■ Round Tables
8 Min - 10 Max


■ VIP/Bridal Table
8 Max

SUITABLE FOR

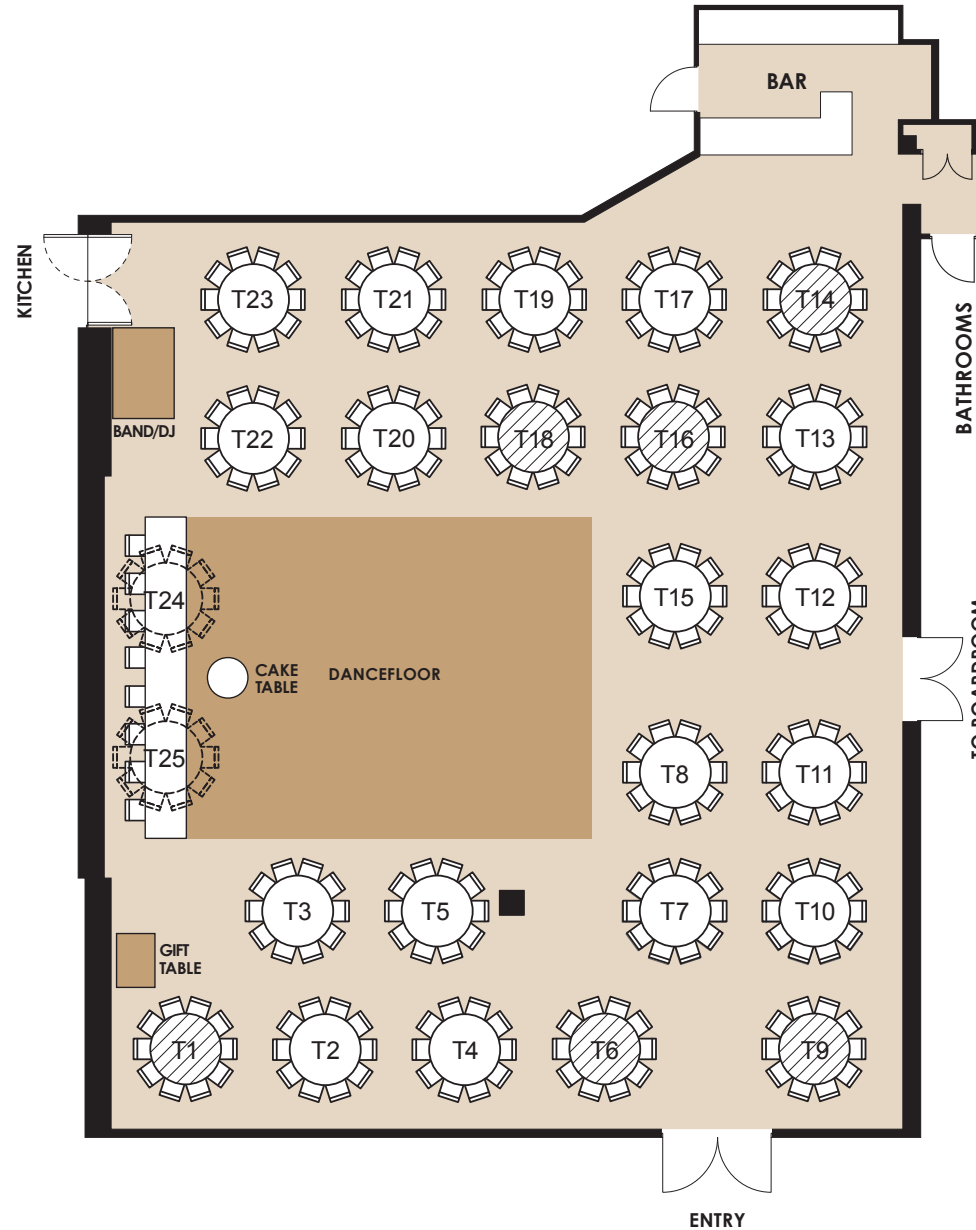
- Weddings
- Gala Dinners

LEGEND

 Round Table

 Don't use unless necessary

 Alternative arrangement using Round Table instead



Room Info



Room Specs



AV Specs

CAPACITIES



Dinner & Dance
120 - 250



Banquet Dinner
120 - 290



Cocktail Party
180 - 360



Theatre Seating
120 - 350

FOR OFFICIAL USE

Event Name

Event Date

Please indicate on your floorplan additional requirements eg. band, photobooth, etc. These are subject to approval by your event stylist and coordinator.

MONTAGE
The Gallery

NAVARRA

EST 1973

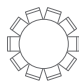


PAX PER TABLE

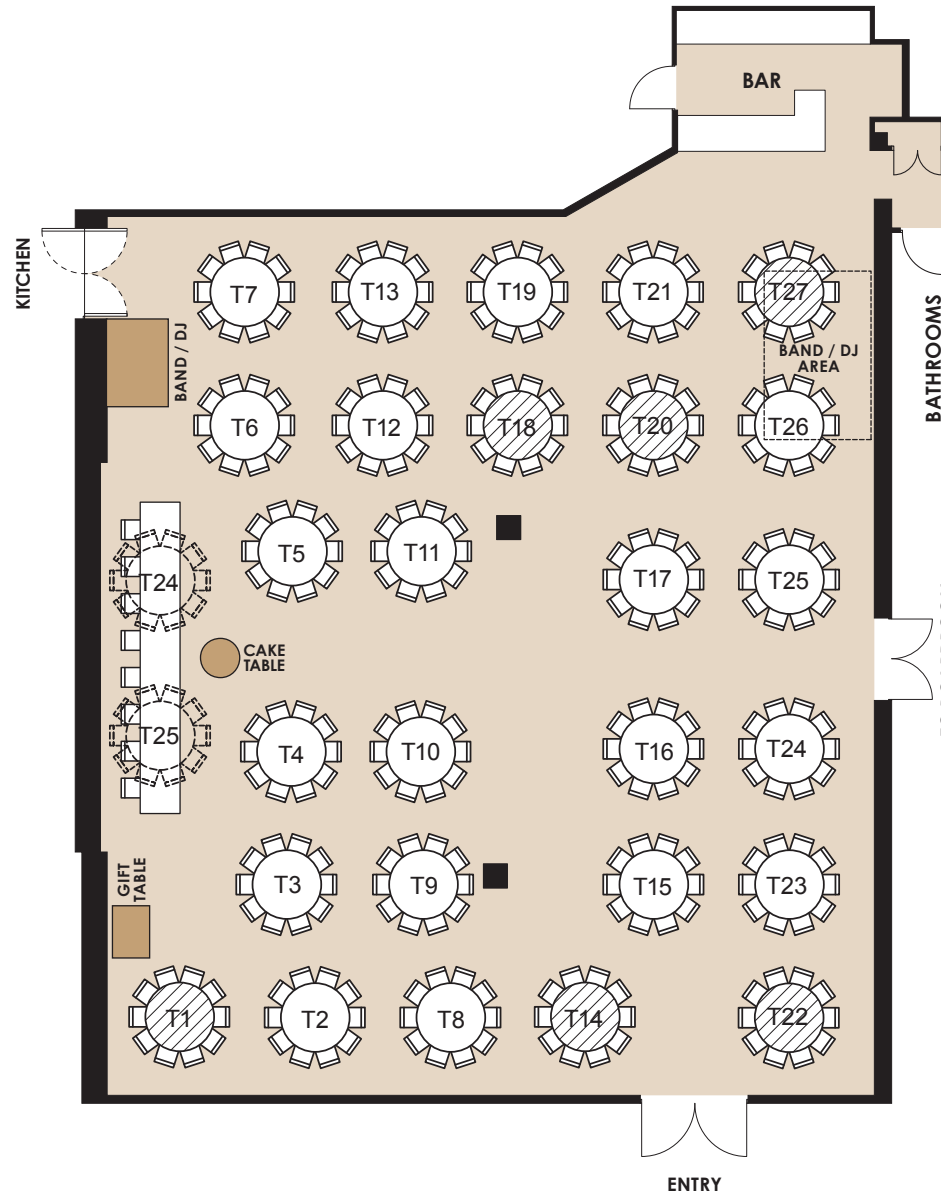
- Round Tables
8 Min - 10 Max

SUITABLE FOR

- Corporate Events

LEGEND

-  Round Table
-  Don't use unless necessary
-  Alternative arrangement using Round Table instead



Room Info



Room Specs



AV Specs

CAPACITIES



Dinner & Dance
120 - 250



Banquet Dinner
120 - 290



Cocktail Party
180 - 360



Theatre Seating
120 - 350

FOR OFFICIAL USE

Event Name

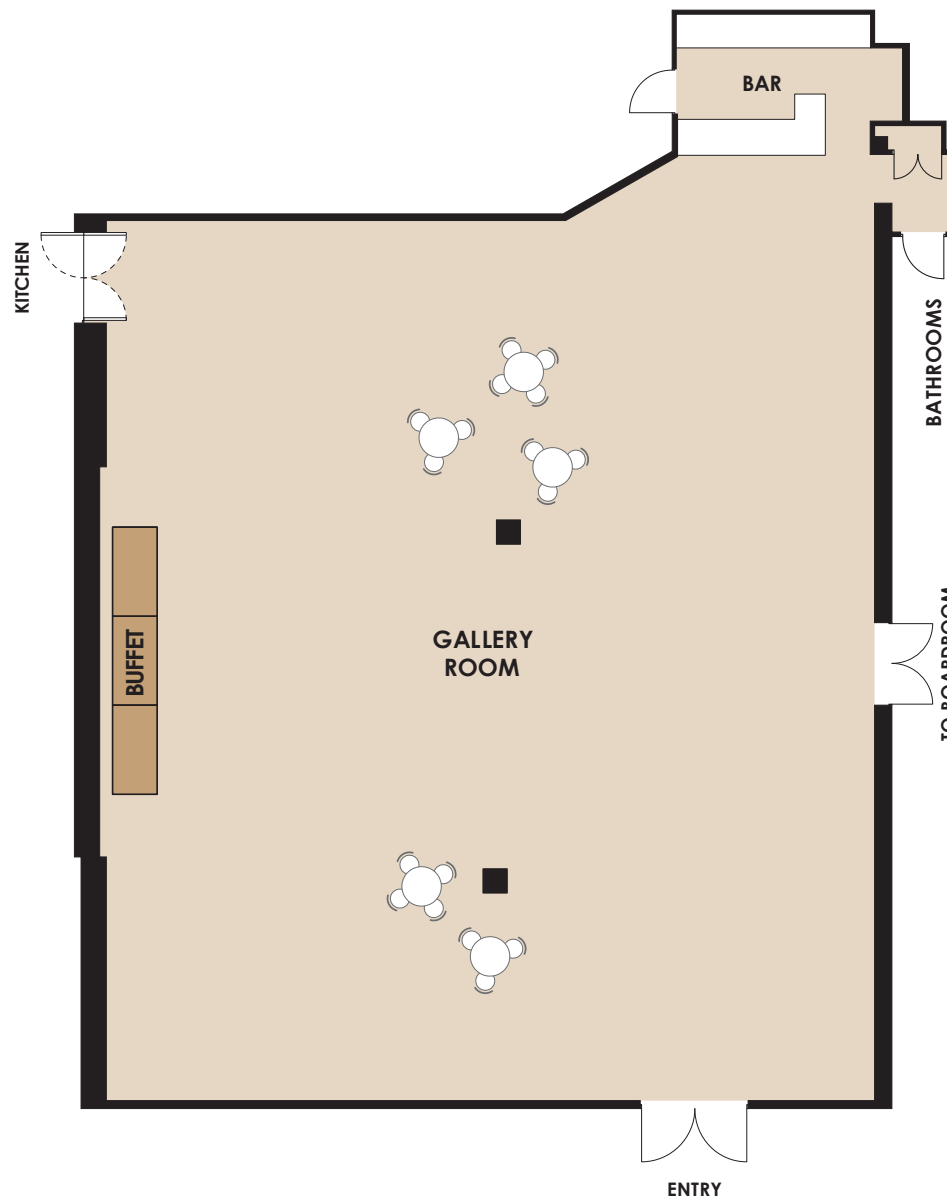
Event Date

Please indicate on your floorplan additional requirements eg. band, photobooth, etc. These are subject to approval by your event stylist and coordinator.

MONTAGE
The Gallery

NAVARRA

EST 1973



Room Info



Room Specs



AV Specs

CAPACITIES



Dinner & Dance
120 – 250



Banquet Dinner
120 – 290



Cocktail Party
180 – 360



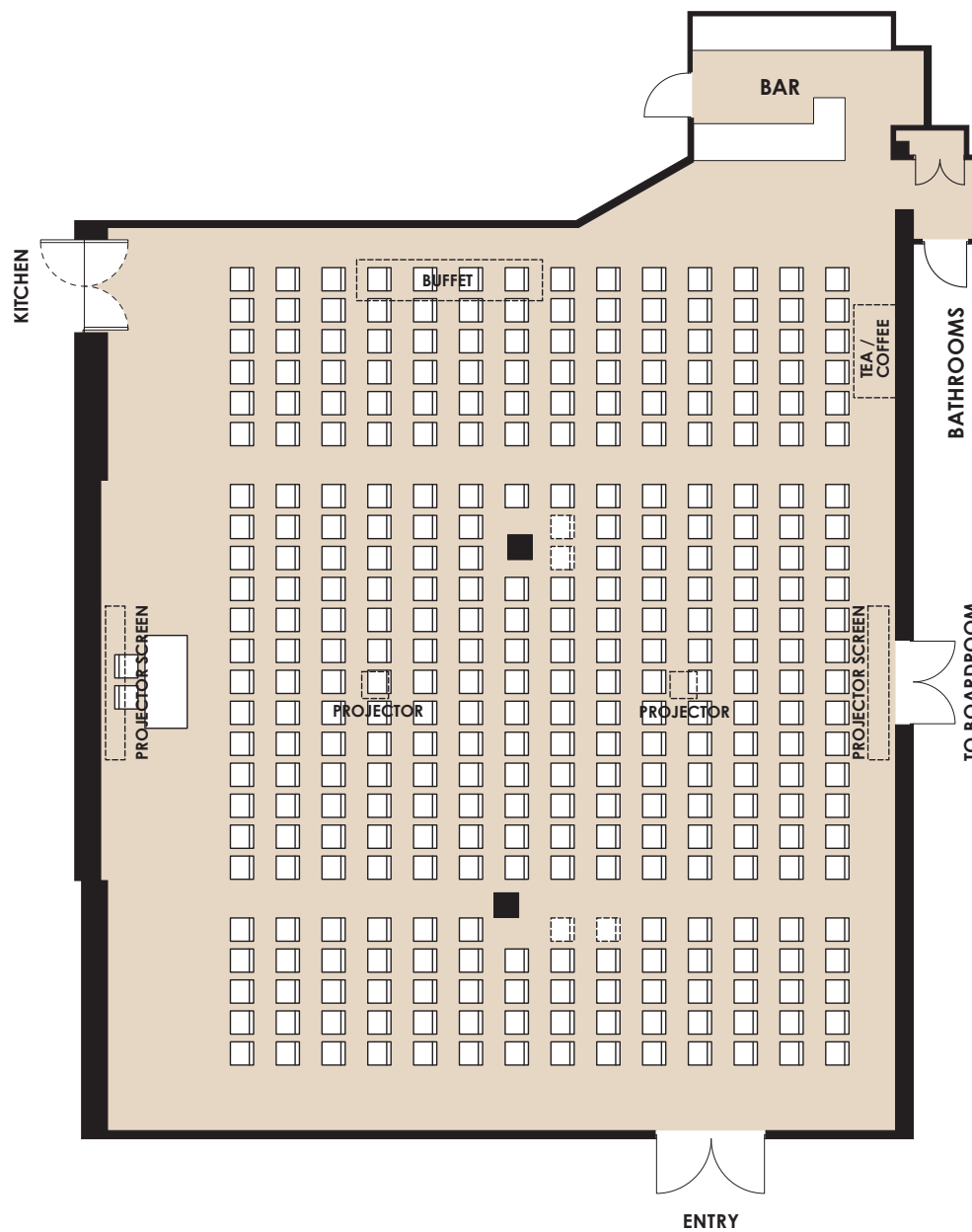
Theatre Seating
120 – 350

FOR OFFICIAL USE

Event Name

Event Date

Please indicate on your floorplan additional requirements eg. band, photobooth, etc. These are subject to approval by your event stylist and coordinator.



Room Info



Room Specs



AV Specs

CAPACITIES



Dinner & Dance
120 - 250



Banquet Dinner
120 - 290



Cocktail Party
180 - 360



Theatre Seating
120 - 350

FOR OFFICIAL USE

Event Name

Event Date

Please indicate on your floorplan additional requirements eg. band, photobooth, etc. These are subject to approval by your event stylist and coordinator.