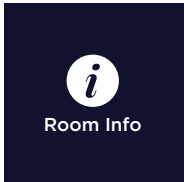
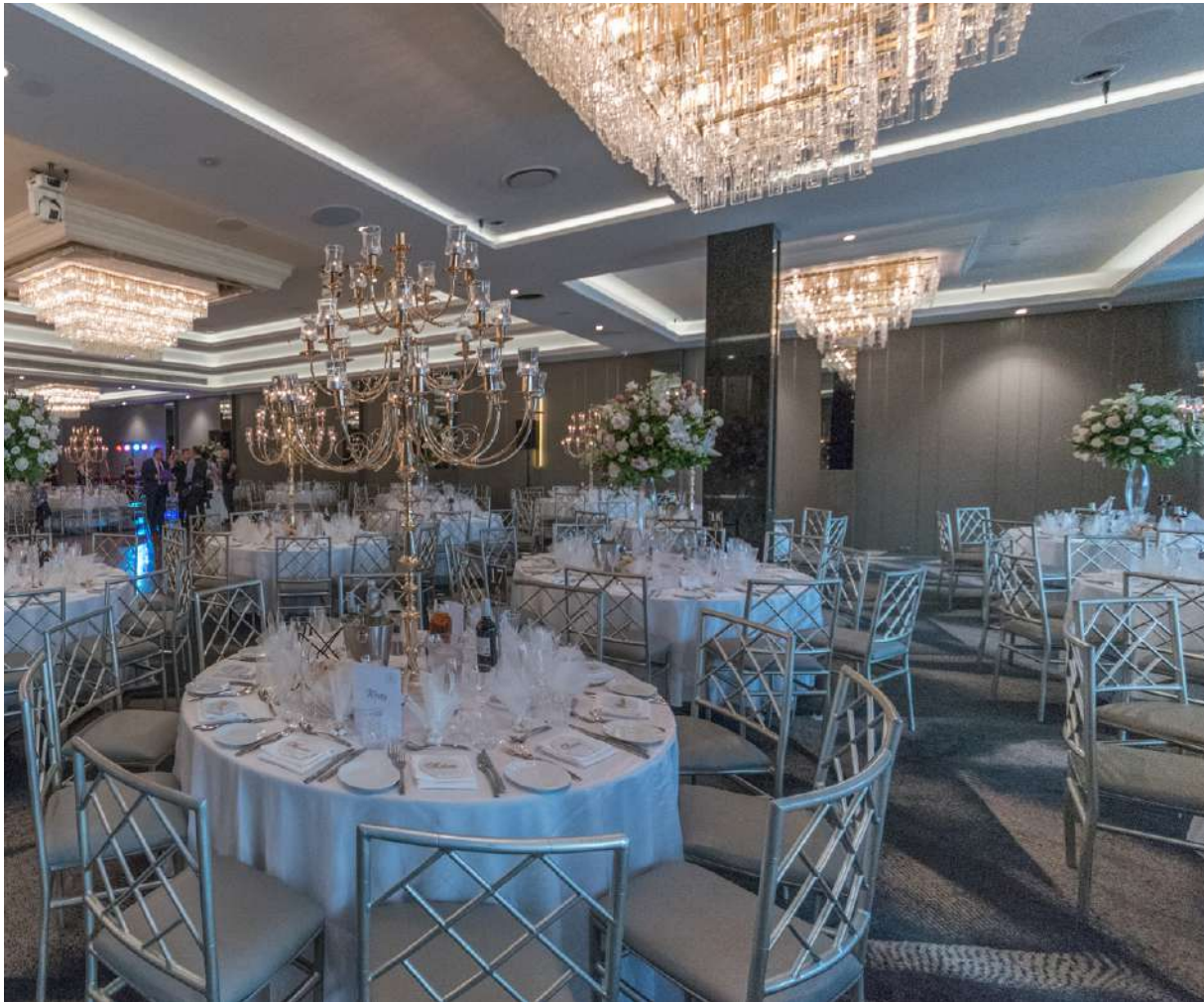


MONTAGE

# DEANAHS VIEW

FACT SHEET & FLOOR PLANS

# Deanah's View



## CAPACITIES



## FEATURES

- Stunning waterfront views
- Dedicated foyer
- Designer interiors and luxurious crystal chandeliers
- Outdoor terrace and welcome drinks area
- Heightened ceilings
- Lift Access

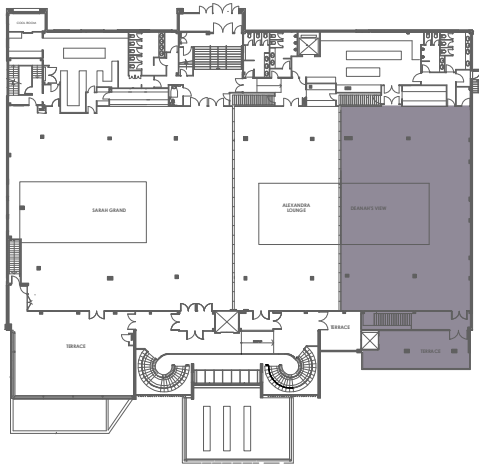
## CONTACT US

- Montage  
38 Frazer Street  
Lilyfield, NSW 2040
- 02 9555 6099  
montage@navarra.com.au  
navarra.com.au

## VENUE MAP

### LEVEL ONE

■ Deanah's View



## ROOM SPECS

■ Ceiling Height  
3.50 - 4.40 m

■ Floor Area  
373 m<sup>2</sup>

■ Dance Floor Area  
10.40 m x 6.55 m



Room Info

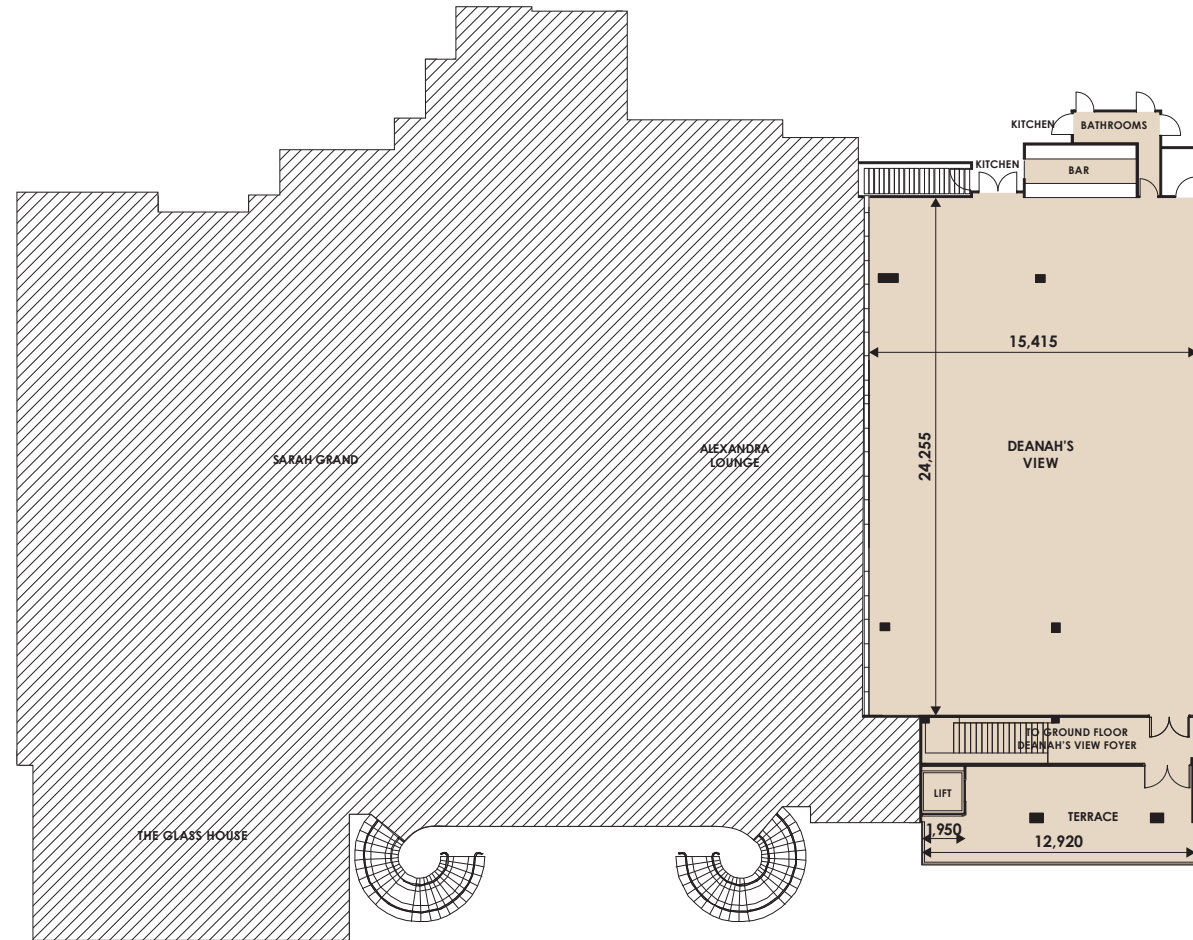
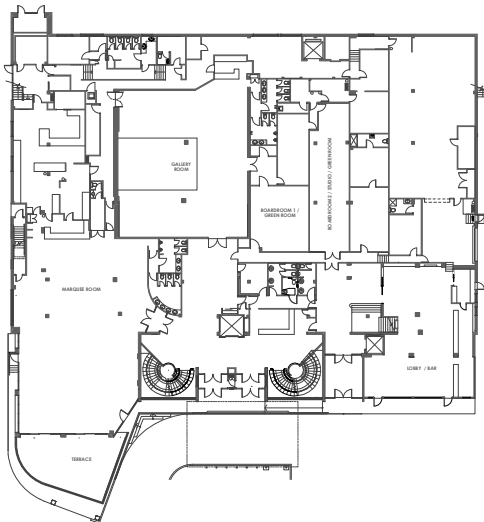


Room Specs



AV Specs

### GROUND LEVEL



## CAPACITIES



Dinner & Dance  
200 - 360



Banquet Dinner  
200 - 420








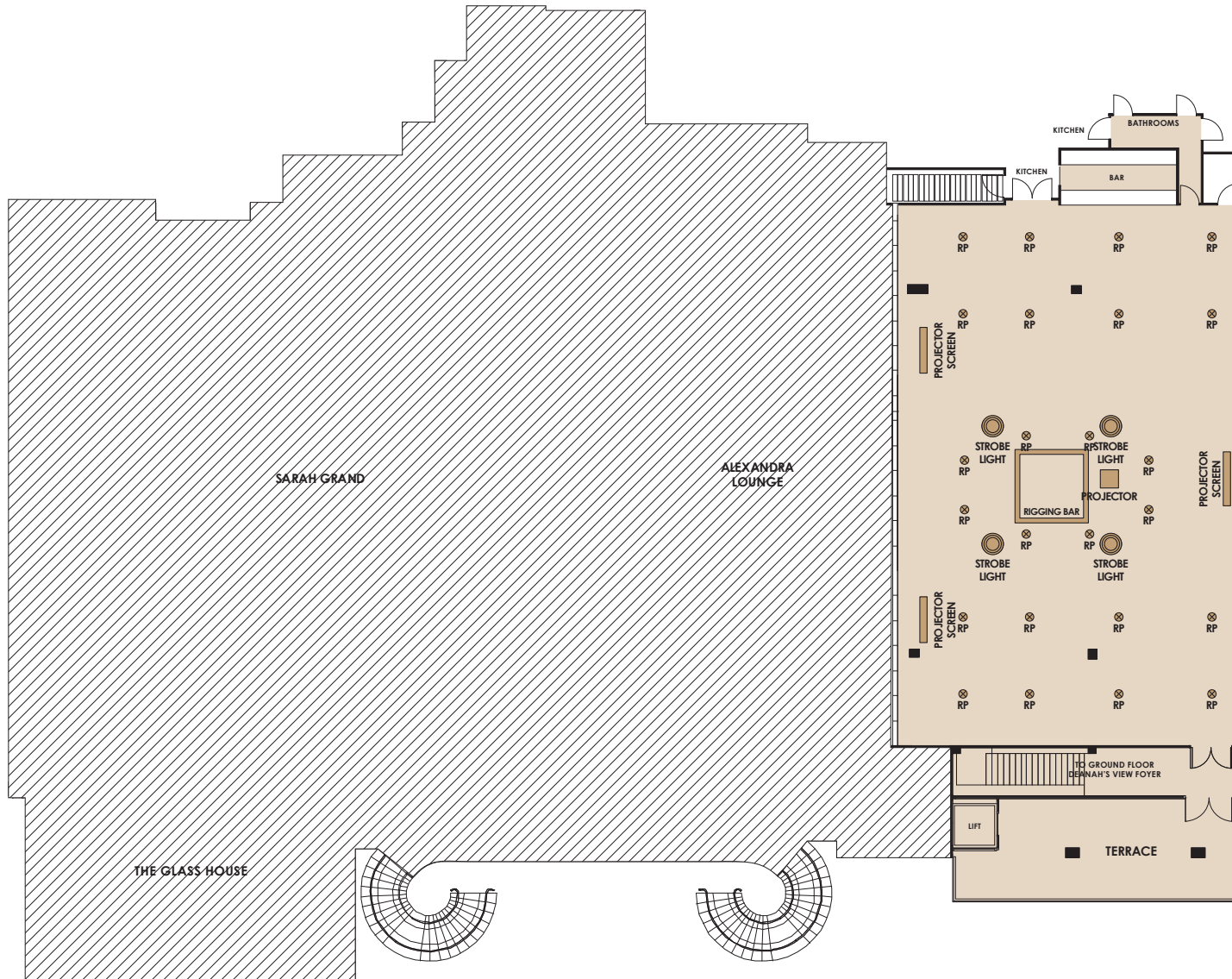
Cocktail Party  
300 - 500



Theatre Seating  
200 - 450

### LEGEND

-  Strobe Light
-  Speakers
-  RP Light
-  Rigging Bar
-  Screens
-  Projectors



Room Info



Room Specs



AV Specs

### CAPACITIES



Dinner & Dance  
200 - 360



Banquet Dinner  
200 - 420



Cocktail Party  
300 - 500



Theatre Seating  
200 - 450

# Deanah's View




**PAX PER TABLE**

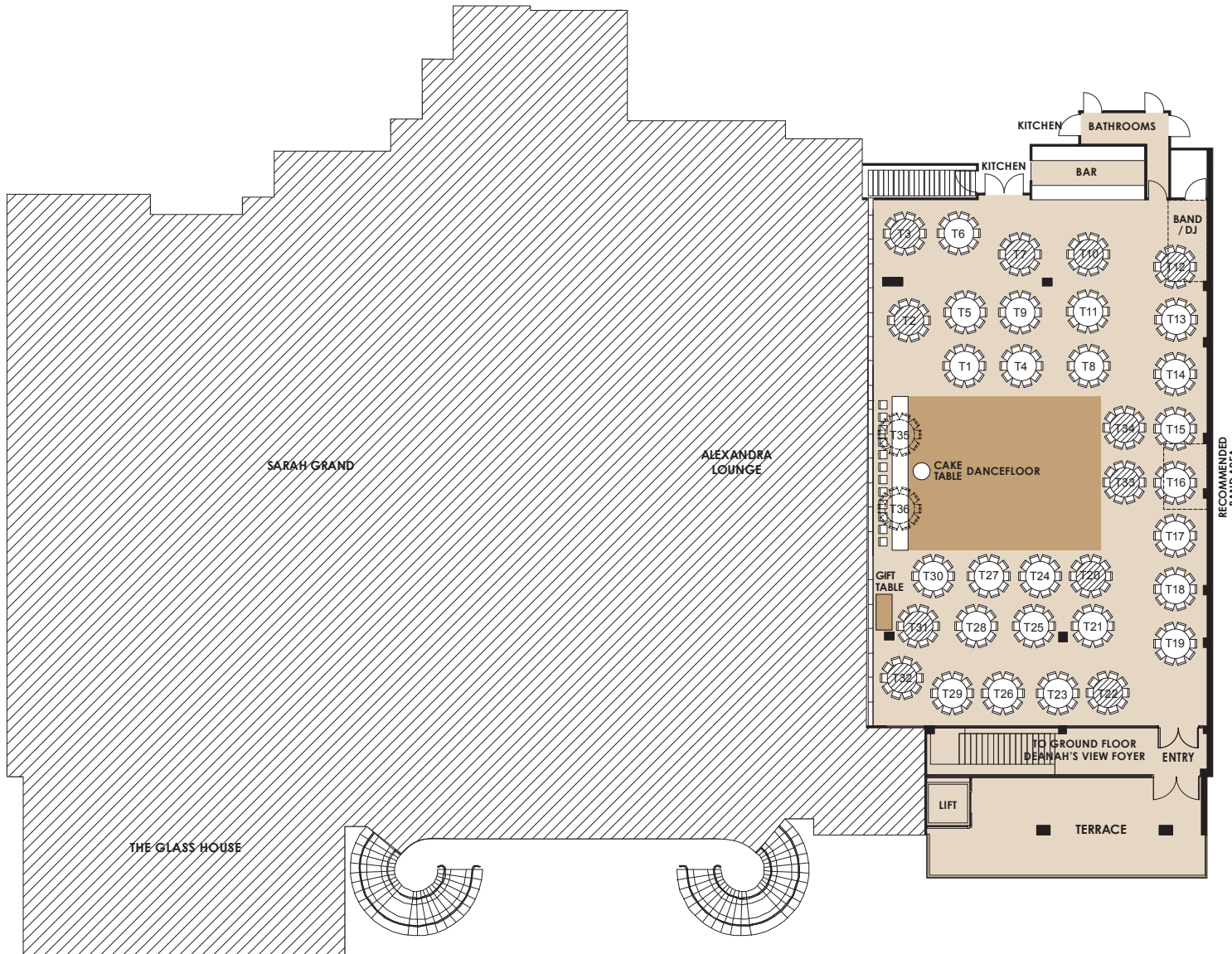
- Round Tables  
8 Min - 10 Max
- VIP/Bridal Table  
12 Max

**SUITABLE FOR**

- Weddings
- Gala Dinners

**LEGEND**

-  Round Table
-  Don't use unless necessary
-  Alternative arrangement using Round Table instead



Room Info



Room Specs



AV Specs

**CAPACITIES**



Dinner & Dance  
200 - 360



Banquet Dinner  
200 - 420



Cocktail Party  
300 - 500



Theatre Seating  
200 - 450

**FOR OFFICIAL USE**

Event Name

Event Date

Please indicate on your floorplan additional requirements eg. band, photobooth, etc. These are subject to approval by your event stylist and coordinator.

# Deanah's View




**PAX PER TABLE**

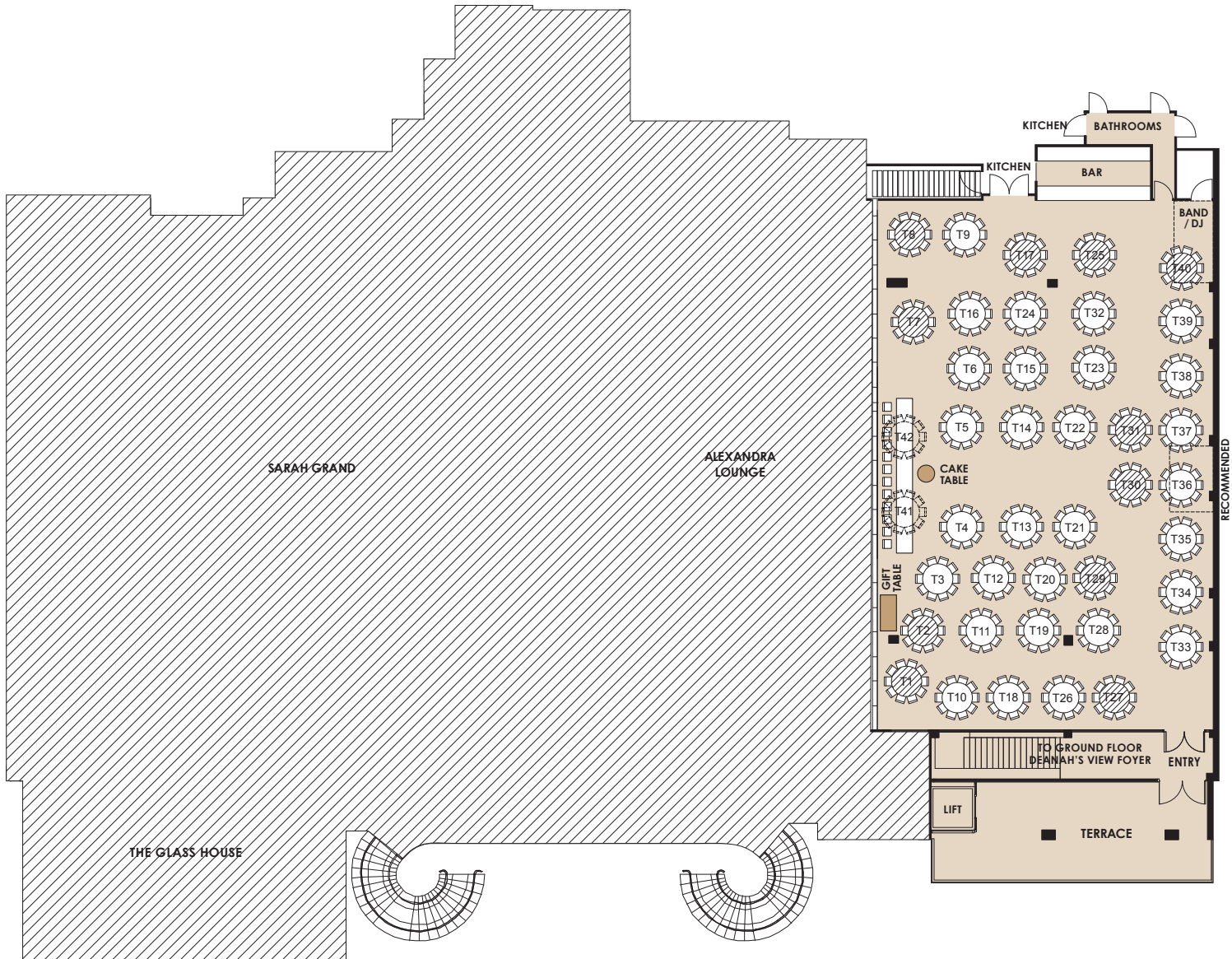
- Round Tables  
8 Min - 10 Max

**SUITABLE FOR**

- Corporate Events

**LEGEND**

-  Round Table
-  Don't use unless necessary
-  Alternative arrangement using Round Table instead



Room Info



Room Specs



AV Specs

**CAPACITIES**



Dinner & Dance  
200 - 360



Banquet Dinner  
200 - 420



Cocktail Party  
300 - 500



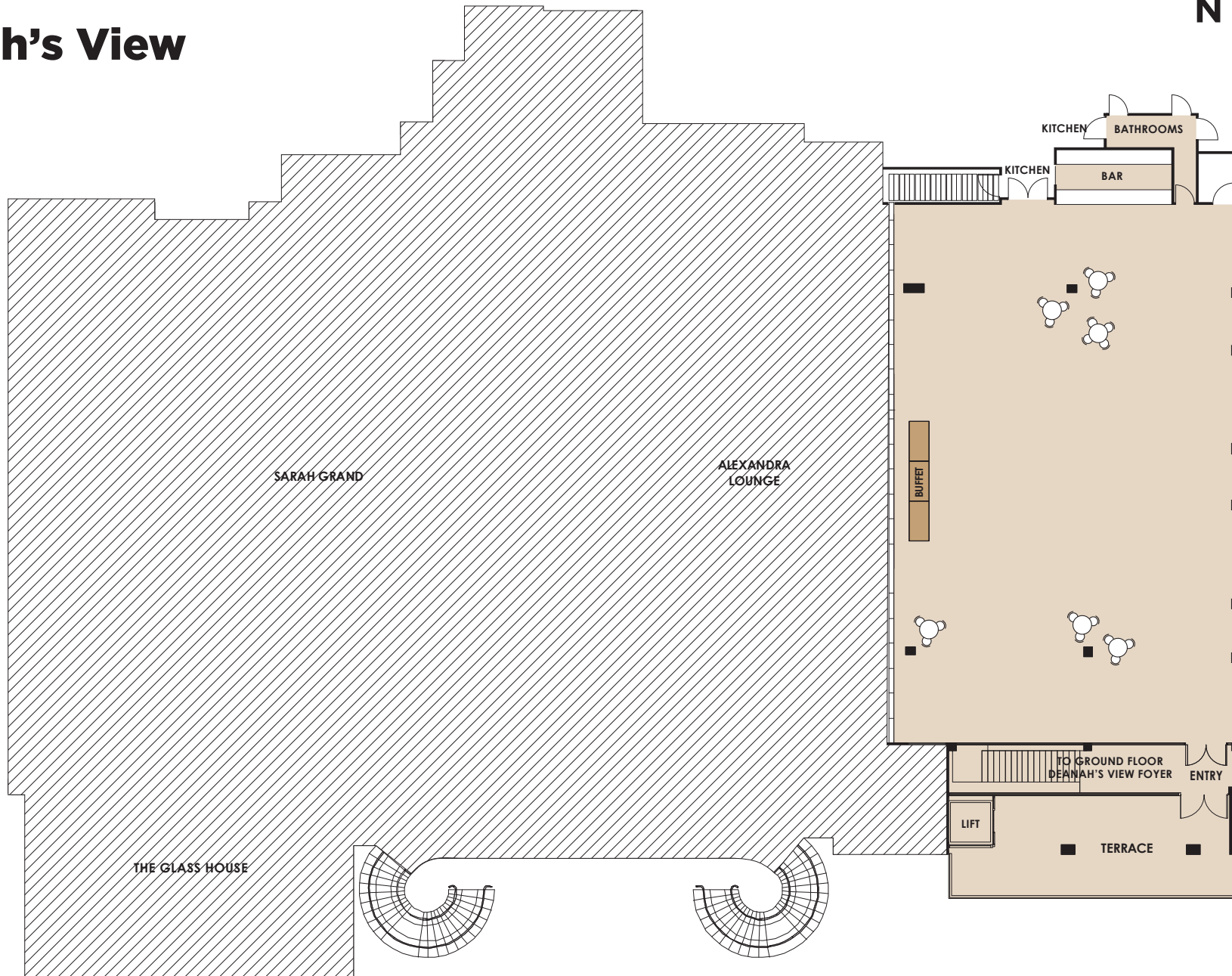
Theatre Seating  
200 - 450

**FOR OFFICIAL USE**

Event Name

Event Date

Please indicate on your floorplan additional requirements eg. band, photobooth, etc. These are subject to approval by your event stylist and coordinator.



Room Info



Room Specs



AV Specs

### CAPACITIES



Dinner & Dance  
200 – 360



Banquet Dinner  
200 – 420



Cocktail Party  
300 – 500



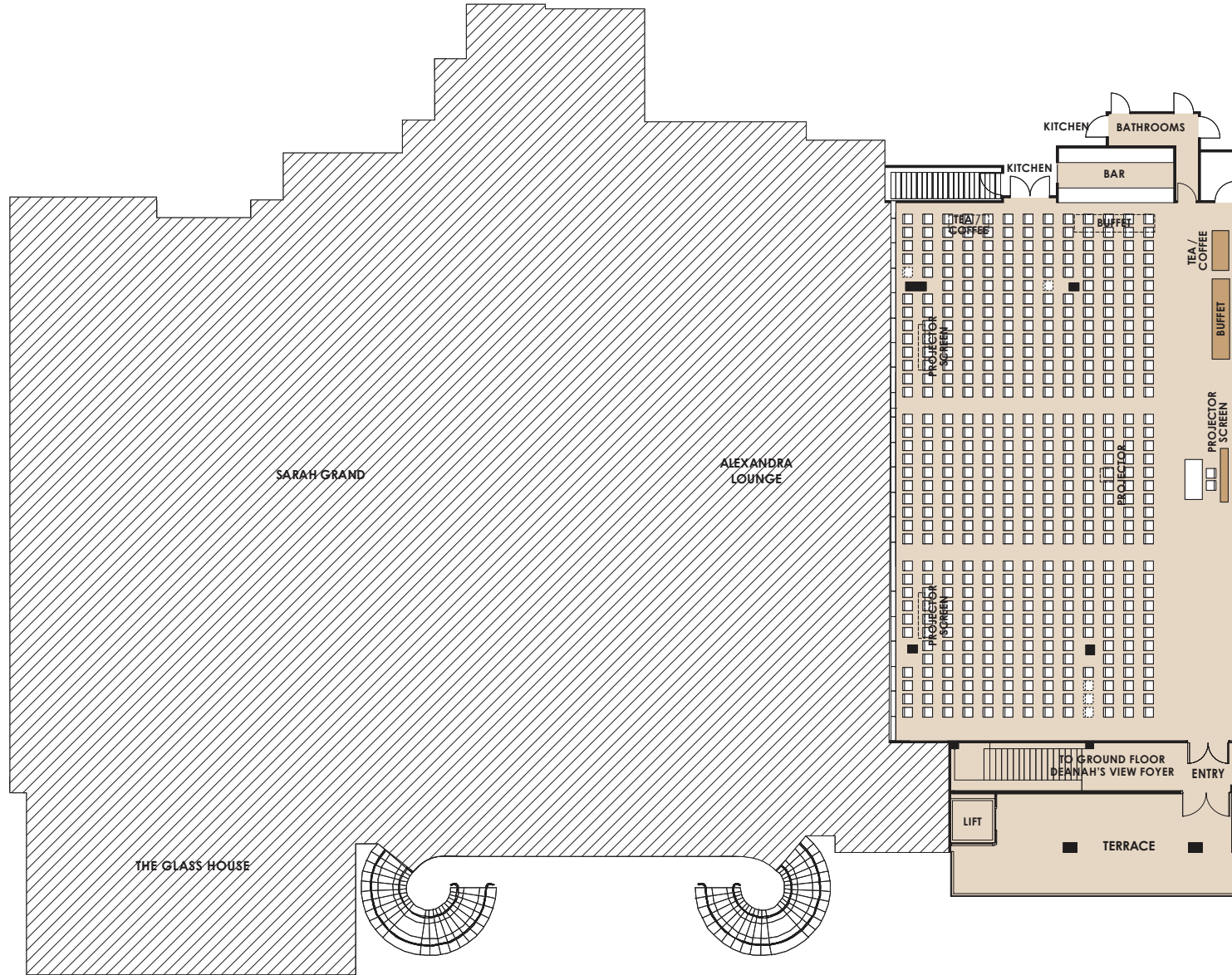
Theatre Seating  
200 – 450

### FOR OFFICIAL USE

Event Name

Event Date

Please indicate on your floorplan additional requirements eg. band, photobooth, etc. These are subject to approval by your event stylist and coordinator.



Room Info



Room Specs



AV Specs

### CAPACITIES



Dinner & Dance  
200 - 360



Banquet Dinner  
200 - 420



Cocktail Party  
300 - 500



Theatre Seating  
200 - 450

### FOR OFFICIAL USE

Event Name

Event Date

Please indicate on your floorplan additional requirements eg. band, photobooth, etc. These are subject to approval by your event stylist and coordinator.