

MONTAGE

# DEANAHS VIEW BALLROOM

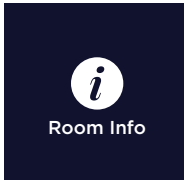
FACT SHEET & FLOOR PLANS

MONTAGE

# Deanah's View Ballroom

NAVARRA

EST 1973



Room Info



Room Specs



AV Specs

## CAPACITIES



Dinner & Dance  
320 - 690



Banquet Dinner  
320 - 770



Cocktail Party  
480 - 860



Theatre Seating  
320 - 810

## FEATURES

- Stunning waterfront views
- Outdoor terrace and welcome drinks area
- Dedicated foyer
- Heightened ceilings
- Designer interiors and luxurious crystal chandeliers
- Lift Access

## CONTACT US

- Le Montage  
38 Frazer Street  
Lilyfield, NSW 2040
- 02 9555 6099  
montage@navarra.com.au  
navarra.com.au

# Deanah's View Ballroom

VENUE MAP

ROOM SPECS

LEVEL ONE

■ Deanah's View Ballroom

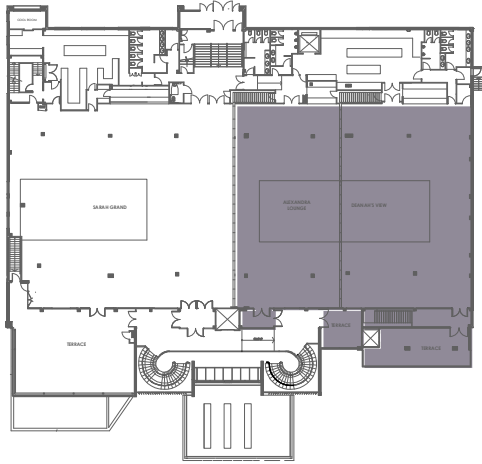
■ Ceiling Height  
3.60 - 4.50 m

■ Floor Area  
674 m<sup>2</sup>

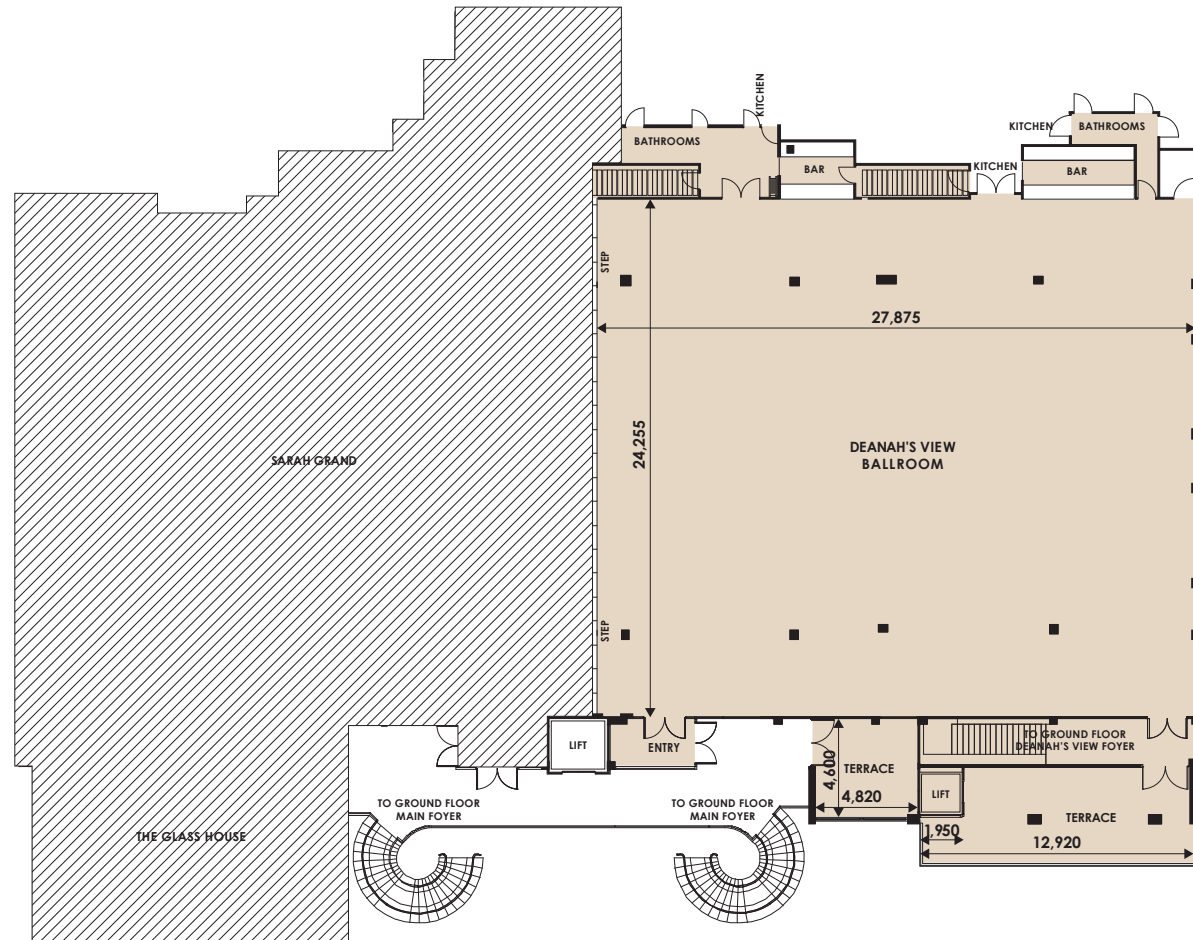
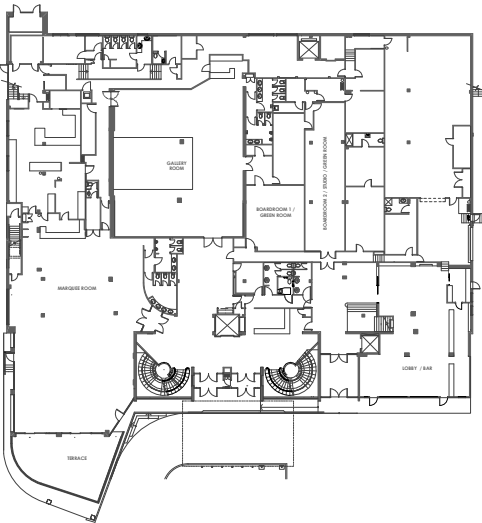
■ Dance Floor Area  
10.40 m x 6.55 m



Room Info



GROUND LEVEL



Room Specs



AV Specs

CAPACITIES



Dinner & Dance  
320 - 690



Banquet Dinner  
320 - 770









Cocktail Party  
480 - 860

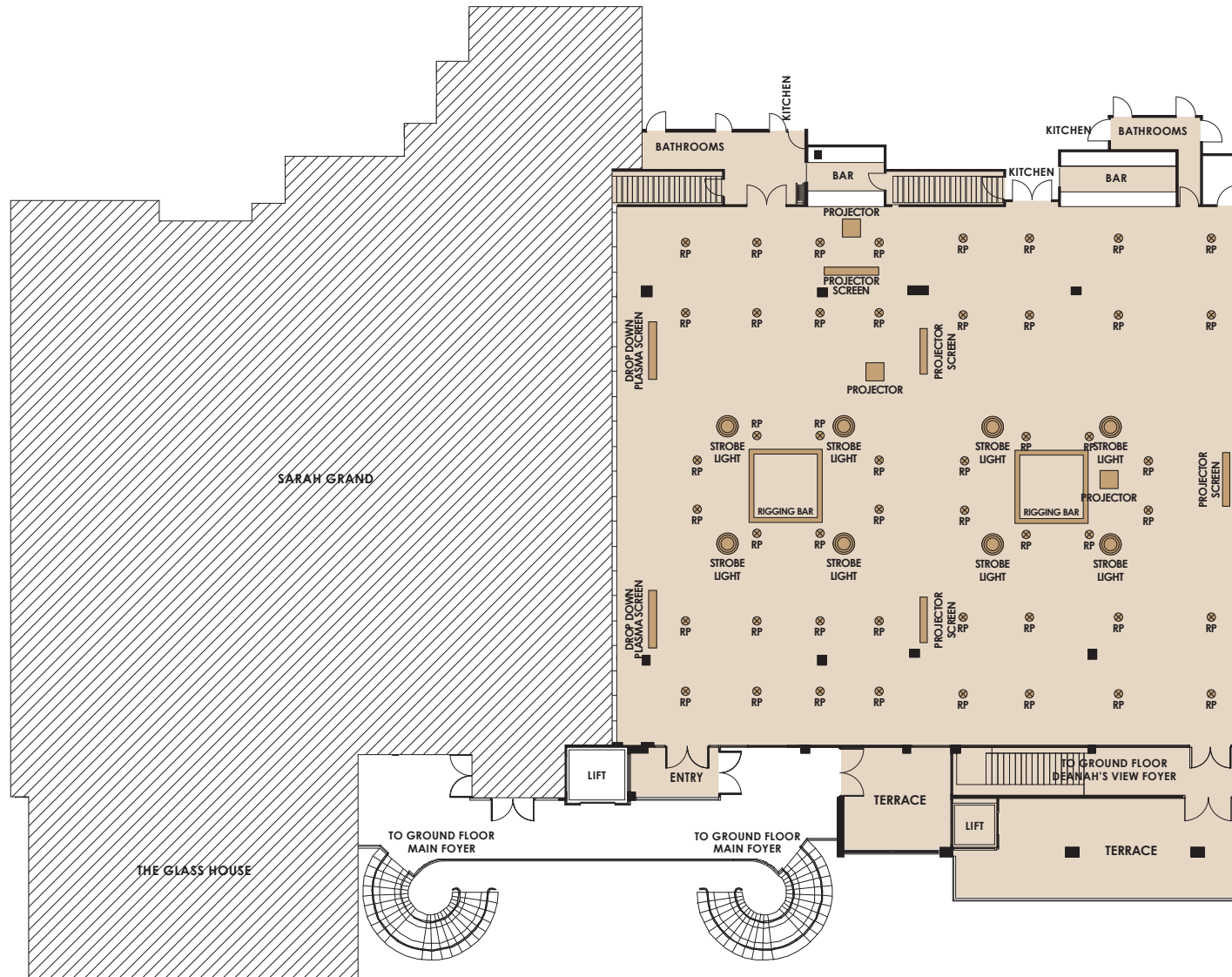


Theatre Seating  
320 - 810

# Deanah's View Ballroom

## LEGEND

-  Strobe Light
-  Speakers
-  RP Light
-  Rigging Bar
-  Screens
-  Projectors



Room Info



Room Specs



AV Specs

## CAPACITIES



Dinner & Dance  
320 - 690



Banquet Dinner  
320 - 770



Cocktail Party  
480 - 860



Theatre Seating  
320 - 810

# Deanah's View Ballroom




**PAX PER TABLE**

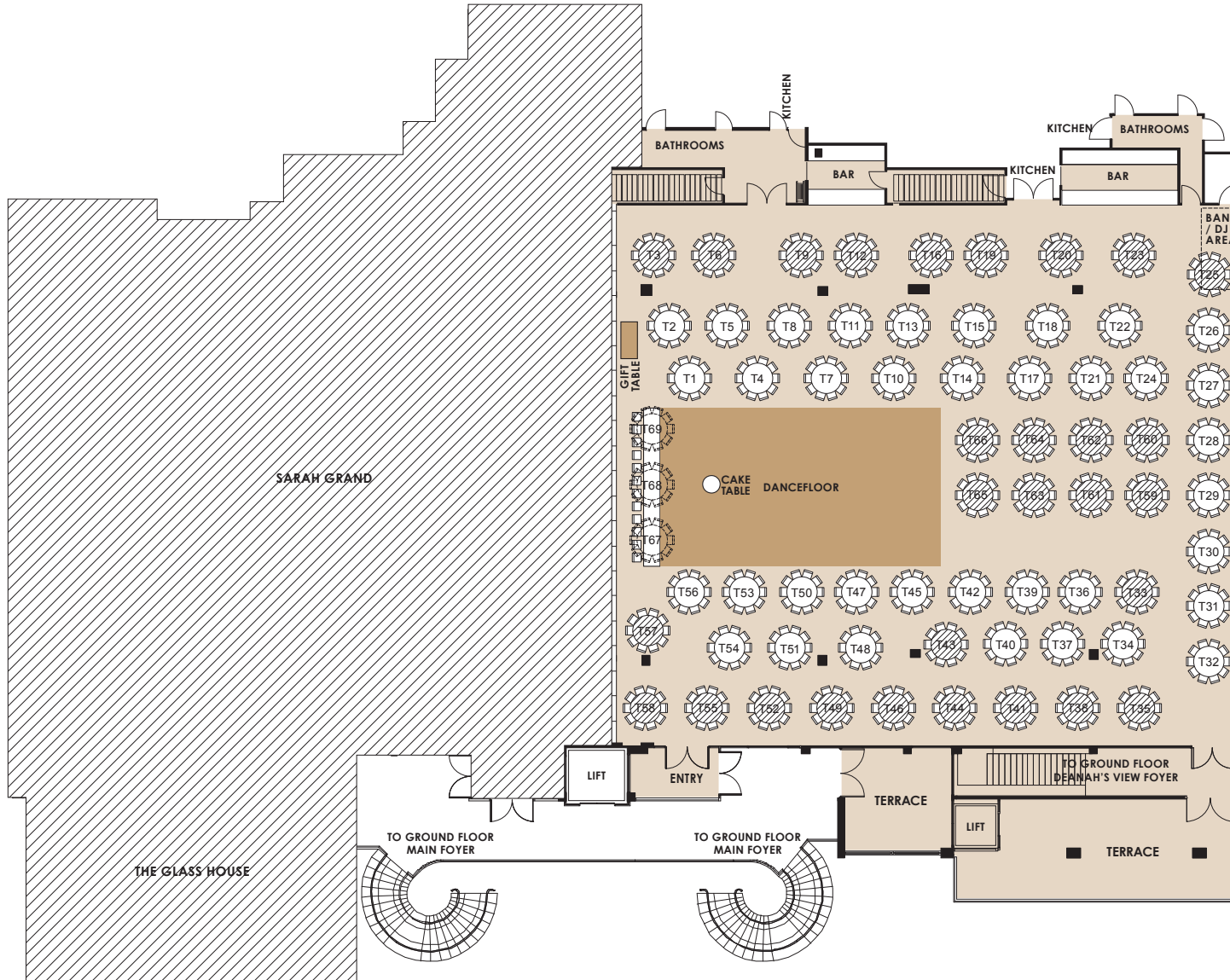
- Round Tables  
8 Min - 10 Max
- VIP/Bridal Table  
12 Max

**SUITABLE FOR**

- Weddings
- Gala Dinners

**LEGEND**

-  Round Table
-  Don't use unless necessary
-  Alternative arrangement using Round Table instead



Room Info



Room Specs



AV Specs

**CAPACITIES**



Dinner & Dance  
320 - 690



Banquet Dinner  
320 - 770



Cocktail Party  
480 - 860



Theatre Seating  
320 - 810

**FOR OFFICIAL USE**

Event Name

Event Date

Please indicate on your floorplan additional requirements eg. band, photobooth, etc. These are subject to approval by your event stylist and coordinator.

# Deanah's View Ballroom

**PAX PER TABLE**

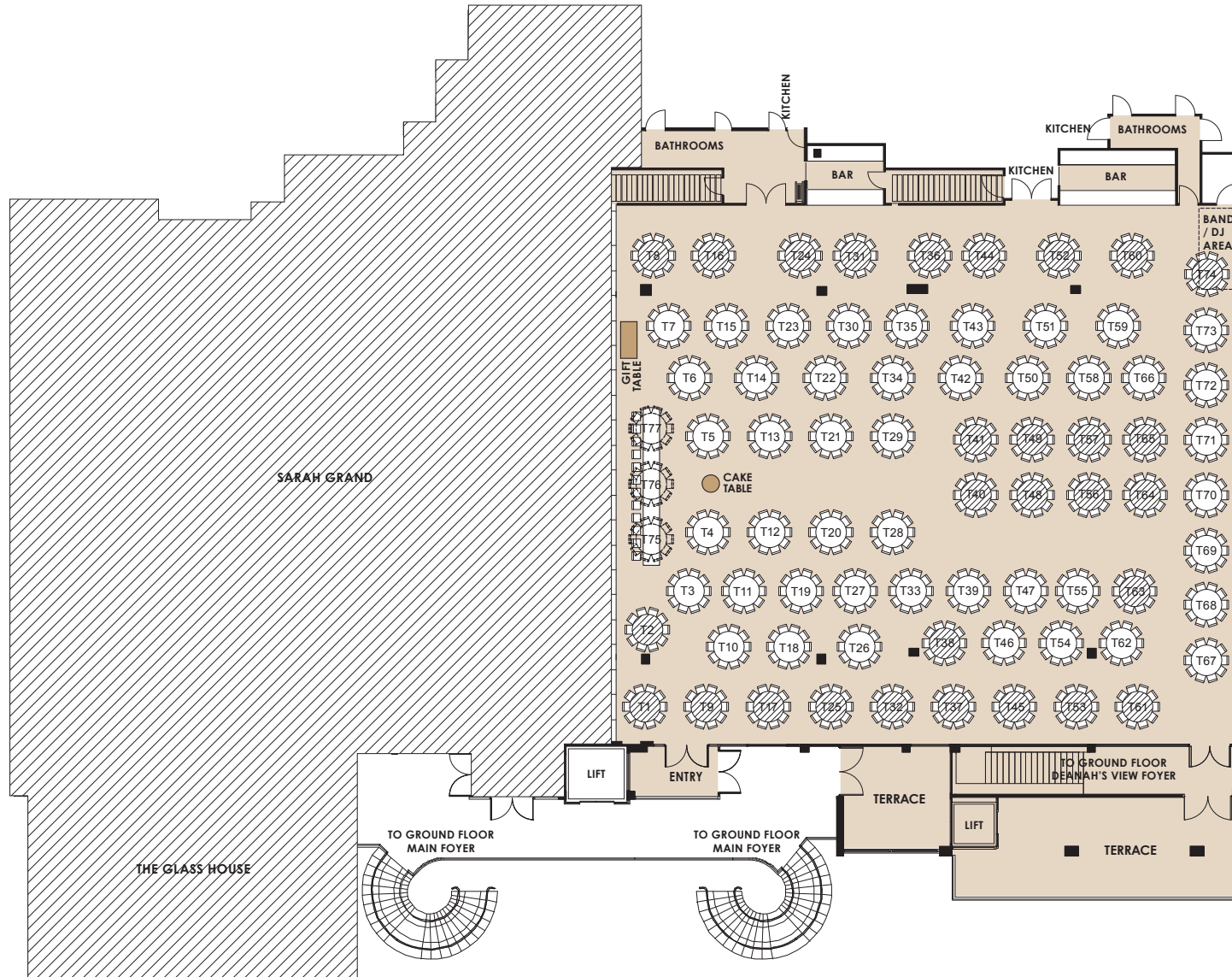
- Round Tables  
8 Min - 10 Max

**SUITABLE FOR**

- Corporate Events

**LEGEND**

- Round Table
- Don't use unless necessary
- Alternative arrangement using Round Table instead



Room Info



Room Specs



AV Specs

**CAPACITIES**



Dinner & Dance  
320 - 690



Banquet Dinner  
320 - 770



Cocktail Party  
480 - 860



Theatre Seating  
320 - 810

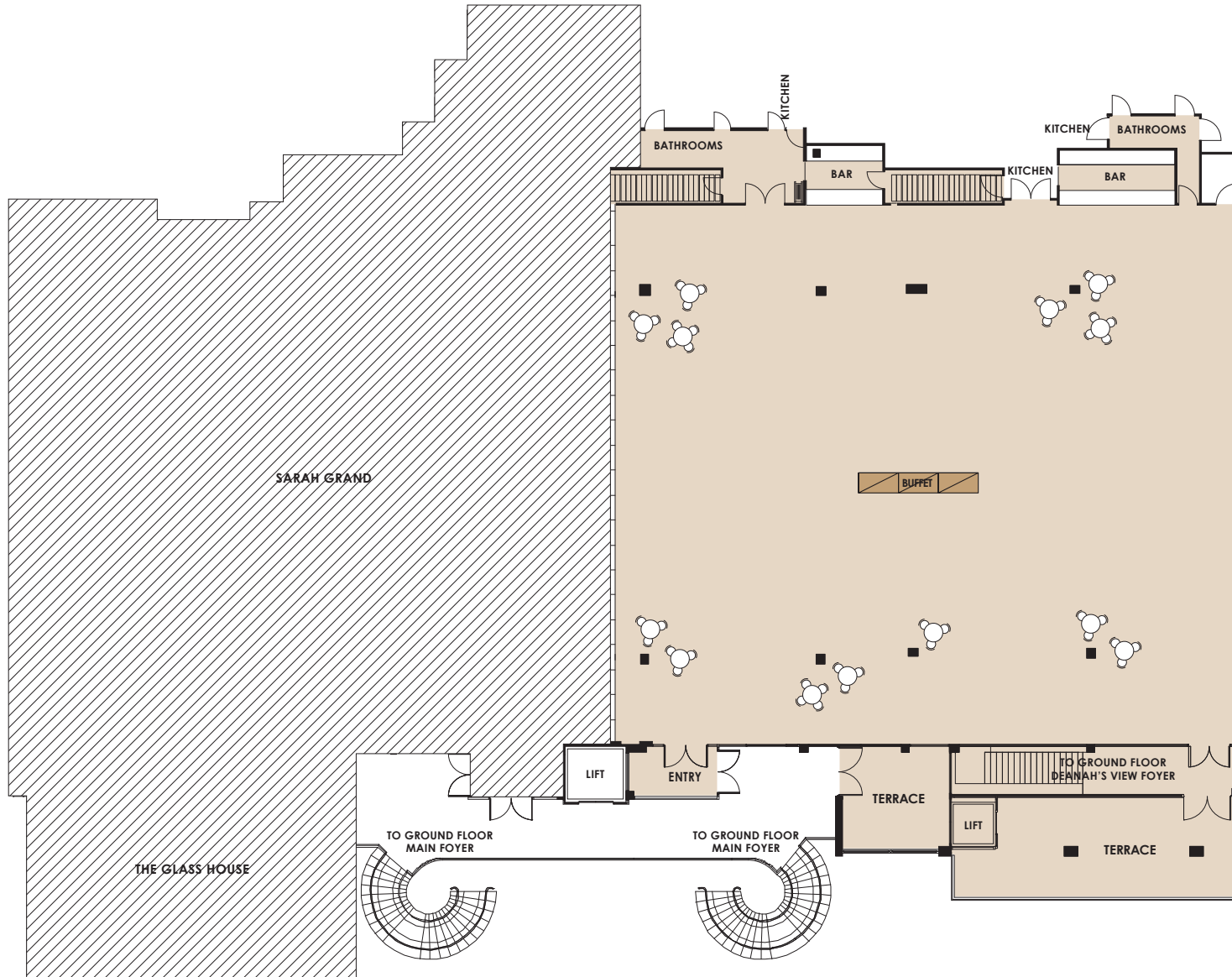
**FOR OFFICIAL USE**

Event Name

Event Date

Please indicate on your floorplan additional requirements eg. band, photobooth, etc. These are subject to approval by your event stylist and coordinator.

# Deanah's View Ballroom



Room Info



Room Specs



AV Specs

CAPACITIES



Dinner & Dance  
320 - 690



Banquet Dinner  
320 - 770



Cocktail Party  
480 - 860



Theatre Seating  
320 - 810

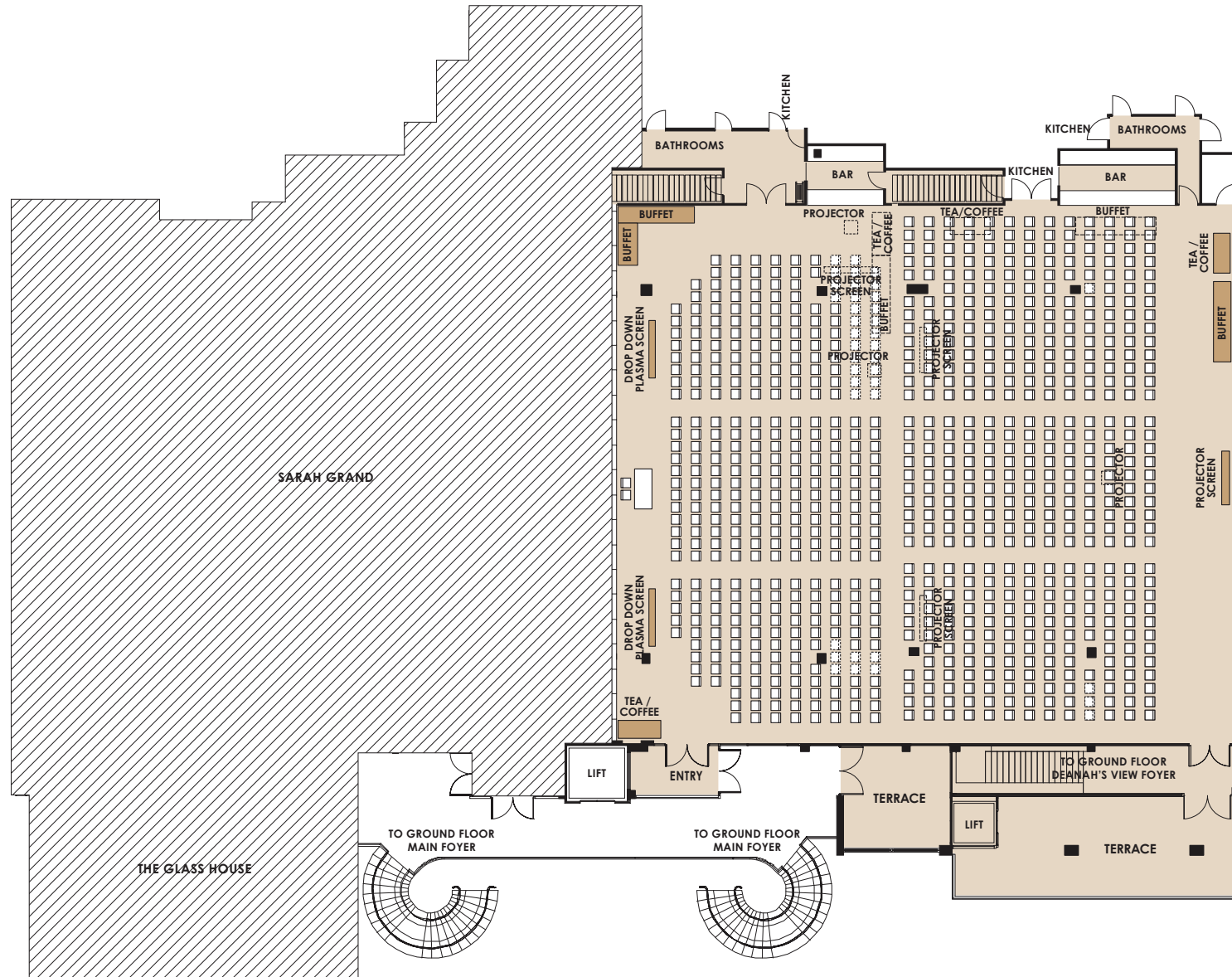
FOR OFFICIAL USE

Event Name

Event Date

Please indicate on your floorplan additional requirements eg. band, photobooth, etc. These are subject to approval by your event stylist and coordinator.

# Deanah's View Ballroom



Room Info



Room Specs



AV Specs

## CAPACITIES



Dinner & Dance  
320 - 690



Banquet Dinner  
320 - 770



Cocktail Party  
480 - 860



Theatre Seating  
320 - 810

### FOR OFFICIAL USE

Event Name

Event Date

Please indicate on your floorplan additional requirements eg. band, photobooth, etc. These are subject to approval by your event stylist and coordinator.