

MONTAGE

# ALEXANDRA LOUNGE

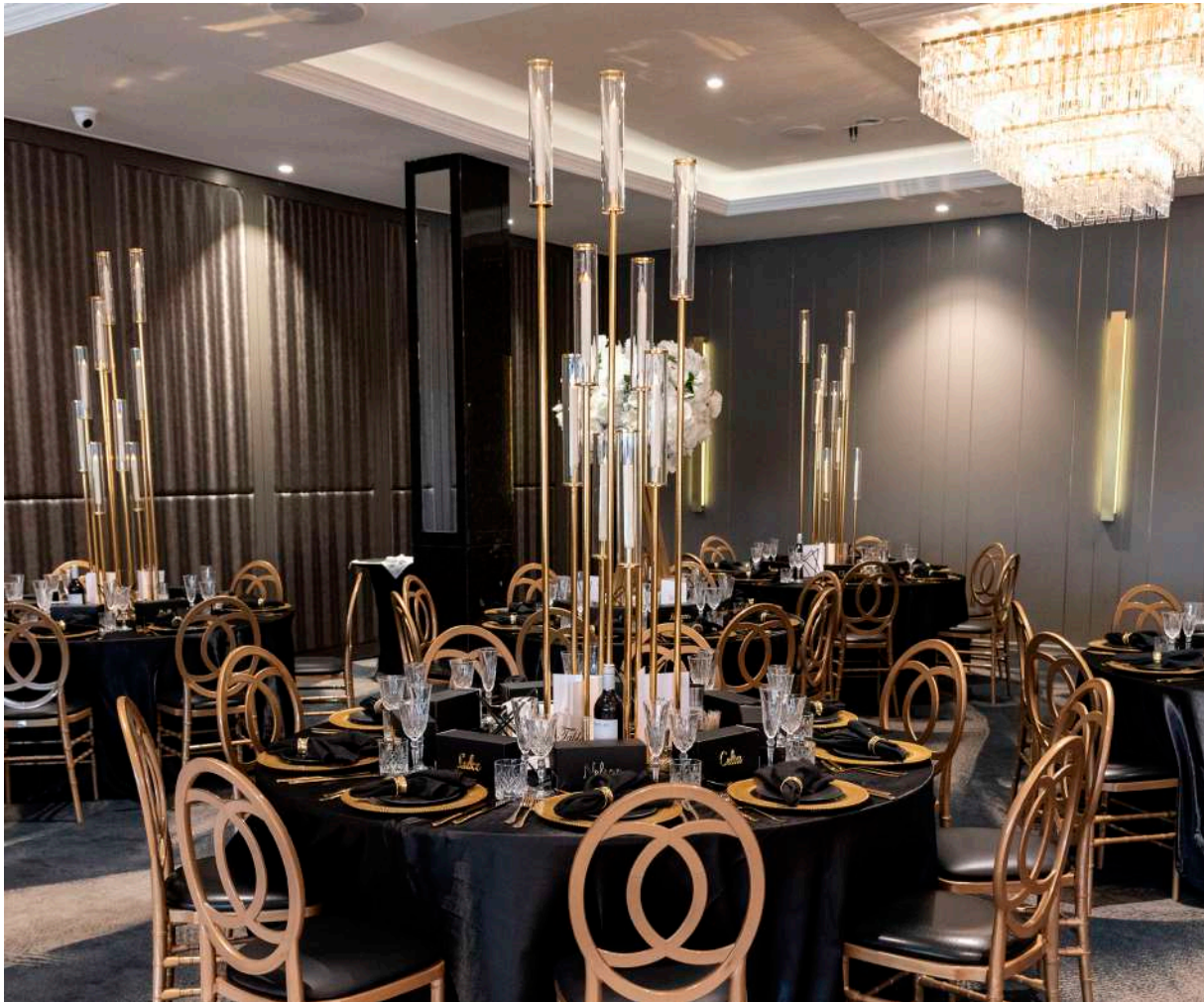
FACT SHEET & FLOOR PLANS

MONTAGE

# Alexandra Lounge

NAVARRA

EST 1973



## FEATURES

- Stunning waterfront views
- Welcome drinks area
- Designer interiors and luxurious crystal chandeliers
- Heightened ceilings
- Lift Access

## CONTACT US

- Le Montage  
38 Frazer Street  
Lilyfield, NSW 2040
- 02 9555 6099  
montage@navarra.com.au  
navarra.com.au



Room Info



Room Specs



AV Specs

## CAPACITIES



Dinner & Dance  
120 - 250



Banquet Dinner  
120 - 290



Cocktail Party  
180 - 360



Theatre Seating 1  
120 - 360

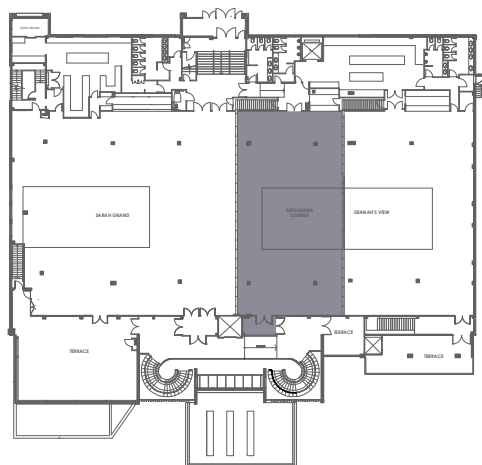


Theatre Seating 2  
120 - 360

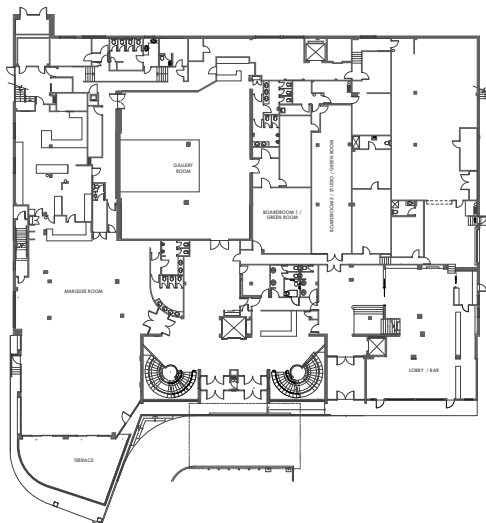
VENUE MAP

LEVEL ONE

- Alexandra Lounge

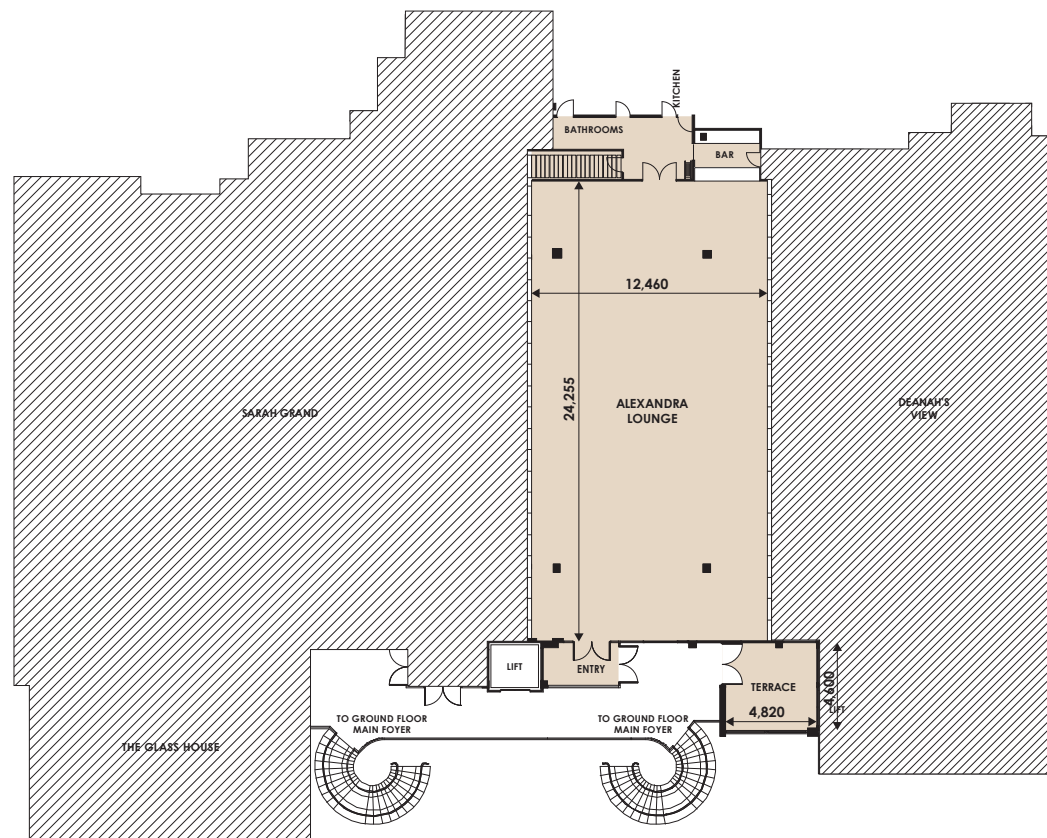


GROUND LEVEL



ROOM SPECS

- Ceiling Height 3.50 - 4.40 m
- Floor Area 301 m<sup>2</sup>
- Dance Floor Area 6.50 m x 7.30 m



Room Info



Room Specs



AV Specs

CAPACITIES



Dinner & Dance  
120 - 250



Banquet Dinner  
120 - 290



Cocktail Party  
180 - 360









Theatre Seating 1  
120 - 360

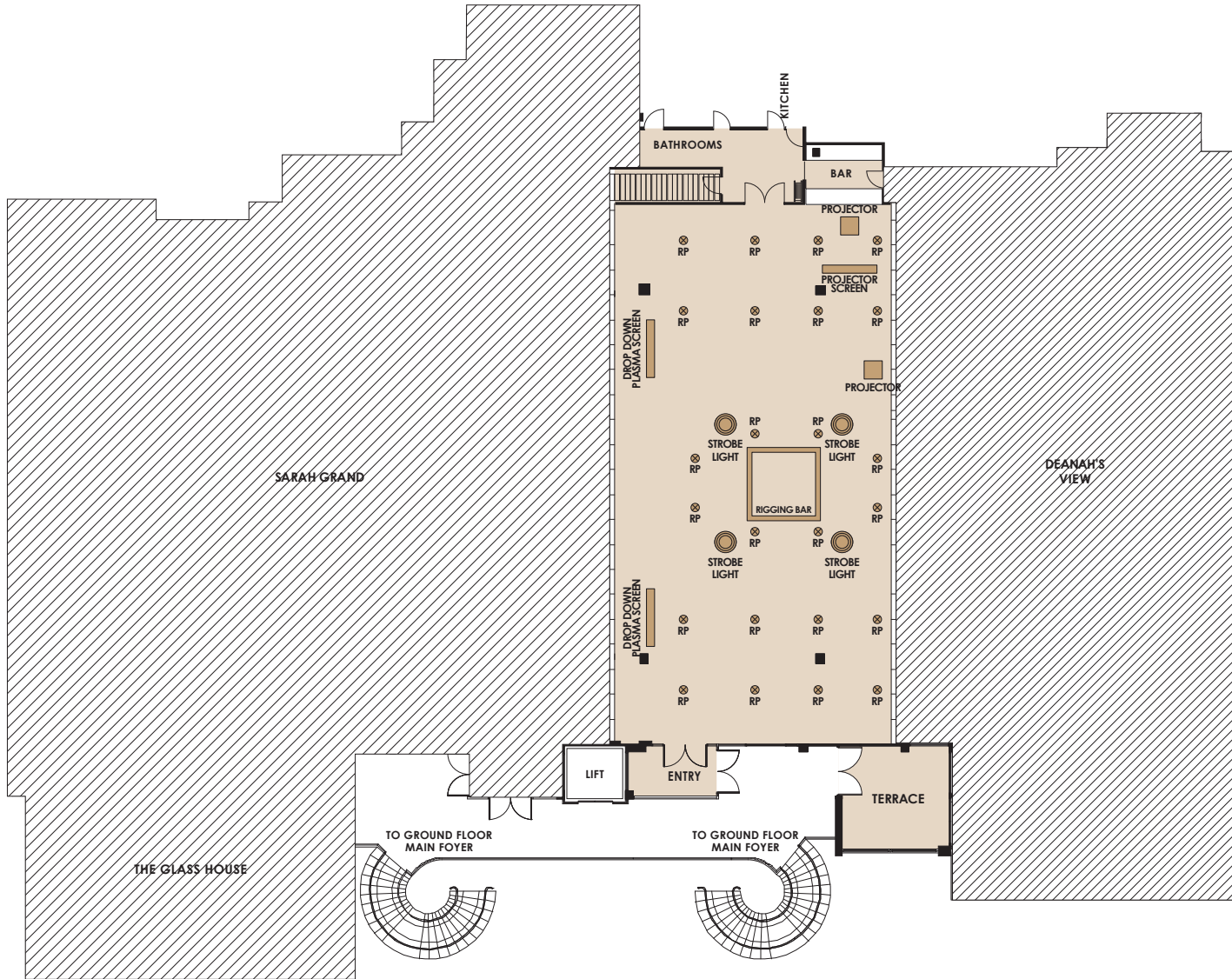


Theatre Seating 2  
120 - 360

# Alexandra Lounge

LEGEND

-  Strobe Light
-  Speakers
-  RP Light
-  Rigging Bar
-  Screens
-  Projectors



Room Info



Room Specs



AV Specs

CAPACITIES



Dinner & Dance  
120 - 250



Banquet Dinner  
120 - 290



Cocktail Party  
180 - 360



Theatre Seating 1  
120 - 360



Theatre Seating 2  
120 - 360

# Alexandra Lounge




**PAX PER TABLE**

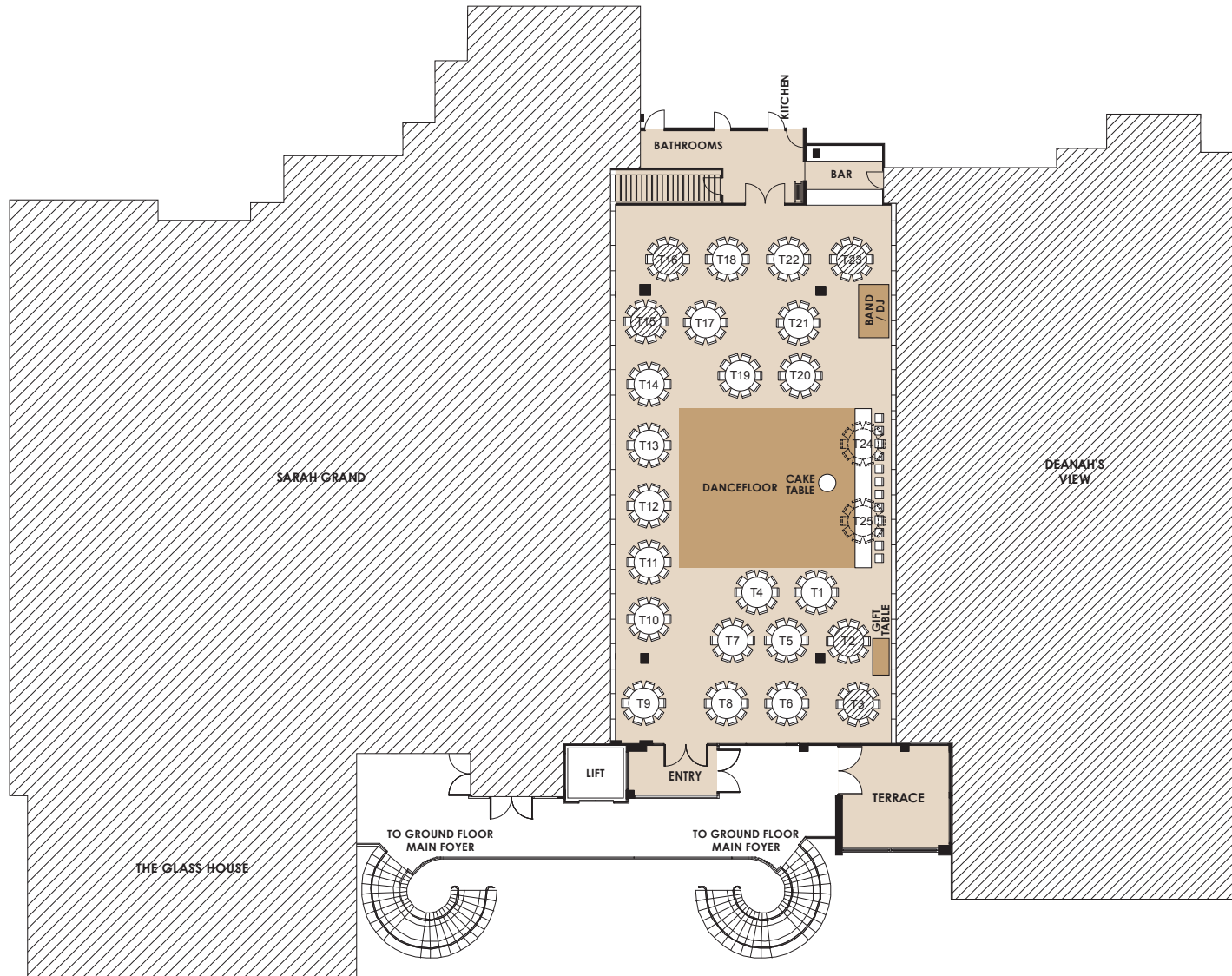
- Round Tables  
8 Min - 10 Max
- VIP/Bridal Table  
12 Max

**SUITABLE FOR**

- Weddings
- Gala Dinners

**LEGEND**

-  Round Table
-  Don't use unless necessary
-  Alternative arrangement using Round Table instead



Room Info



Room Specs



AV Specs

**CAPACITIES**



Dinner & Dance  
120 - 250



Banquet Dinner  
120 - 290



Cocktail Party  
180 - 360



Theatre Seating 1  
120 - 360



Theatre Seating 2  
120 - 360

**FOR OFFICIAL USE**

Event Name

Event Date

Please indicate on your floorplan additional requirements eg. band, photobooth, etc. These are subject to approval by your event stylist and coordinator.

# Alexandra Lounge




**PAX PER TABLE**

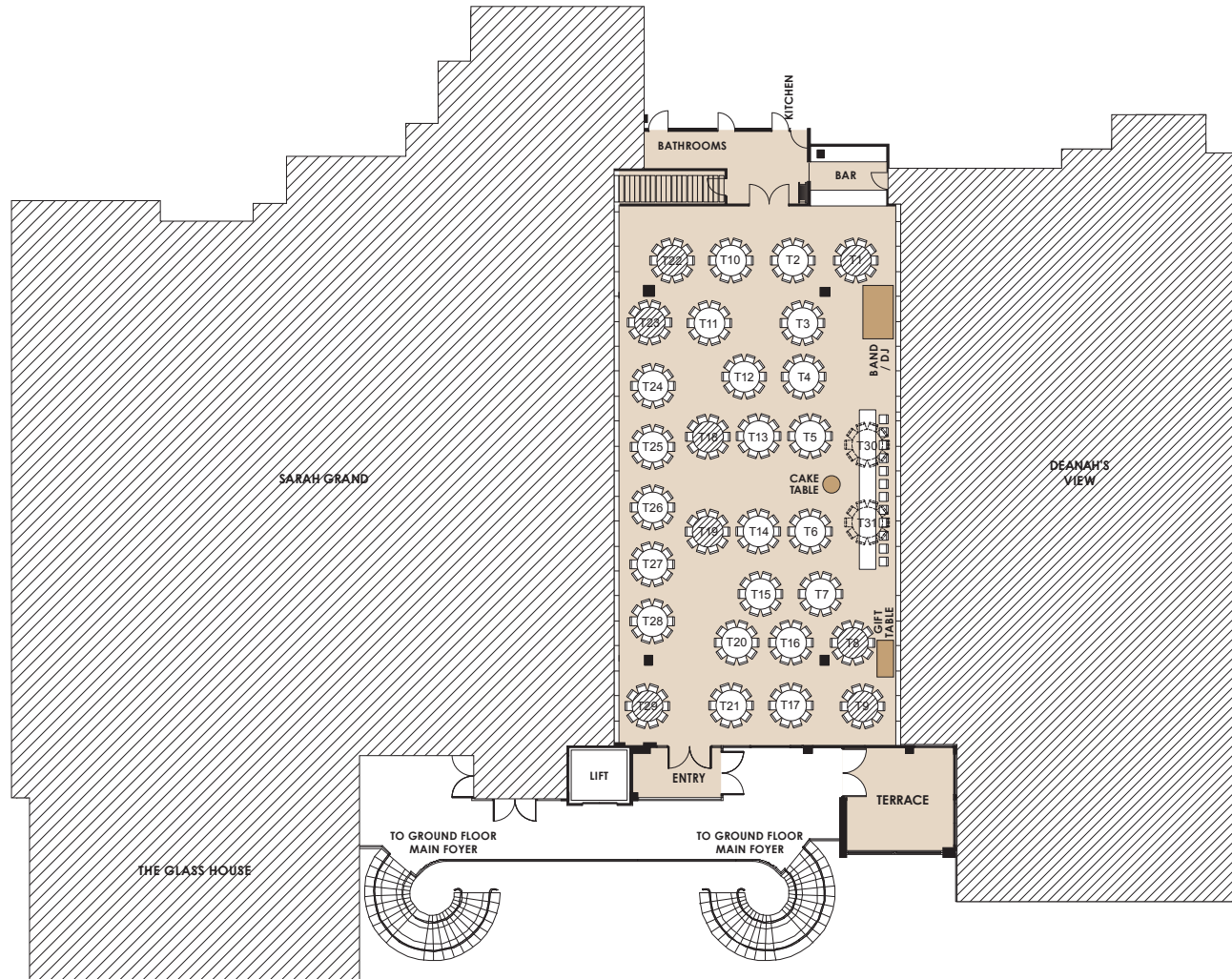
- Round Tables  
8 Min - 10 Max

**SUITABLE FOR**

- Corporate Events

**LEGEND**

-  Round Table
-  Don't use unless necessary
-  Alternative arrangement using Round Table instead



Room Info



Room Specs



AV Specs

**CAPACITIES**



Dinner & Dance  
120 - 250



Banquet Dinner  
120 - 290



Cocktail Party  
180 - 360



Theatre Seating 1  
120 - 360



Theatre Seating 2  
120 - 360

**FOR OFFICIAL USE**

Event Name

Event Date

Please indicate on your floorplan additional requirements eg. band, photobooth, etc. These are subject to approval by your event stylist and coordinator.

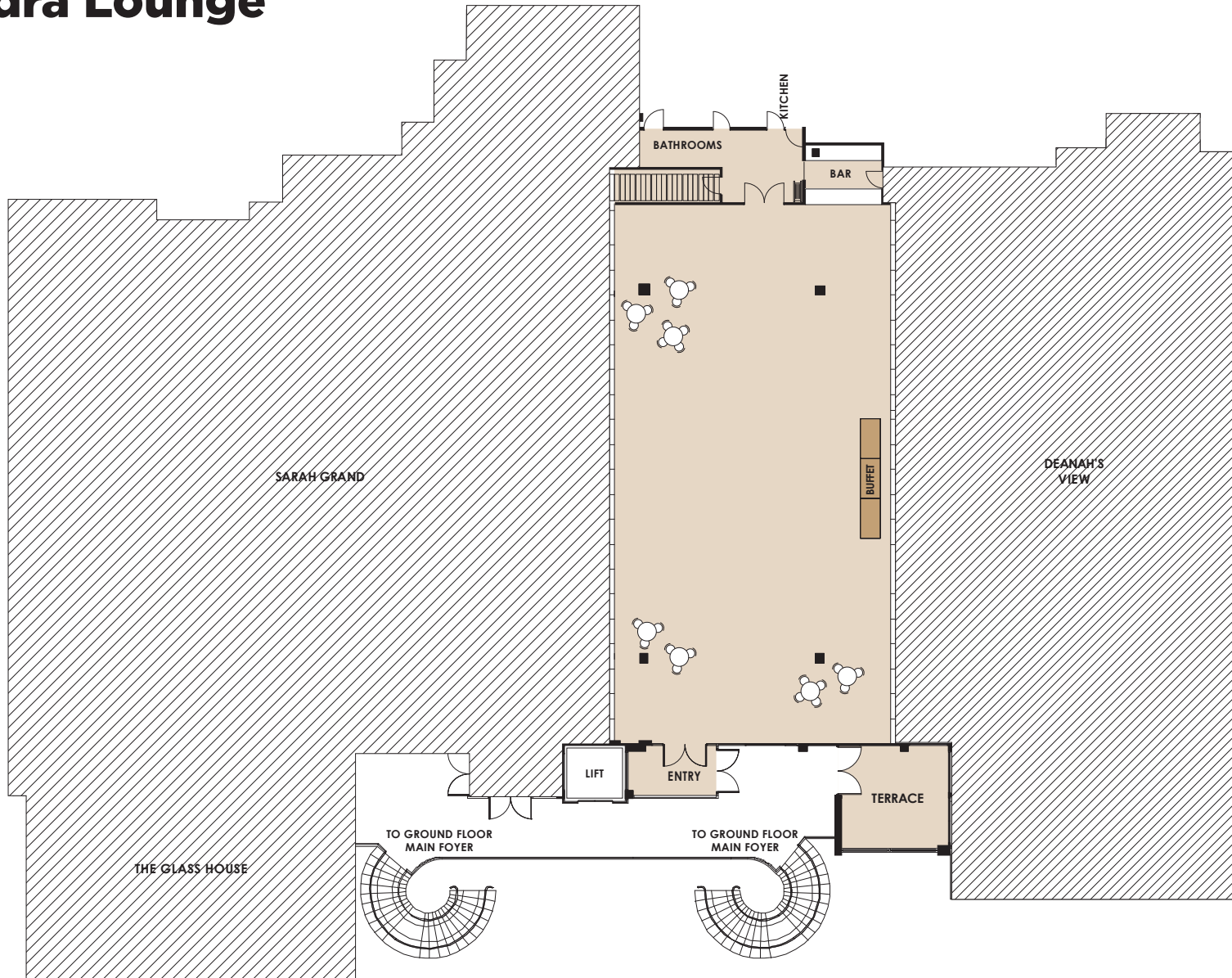


MONTAGE

# Alexandra Lounge

# NAVARRA

EST 1973



Room Info



Room Specs



AV Specs

### CAPACITIES



Dinner & Dance  
120 - 250



Banquet Dinner  
120 - 290



Cocktail Party  
180 - 360



Theatre Seating 1  
120 - 360



Theatre Seating 2  
120 - 360

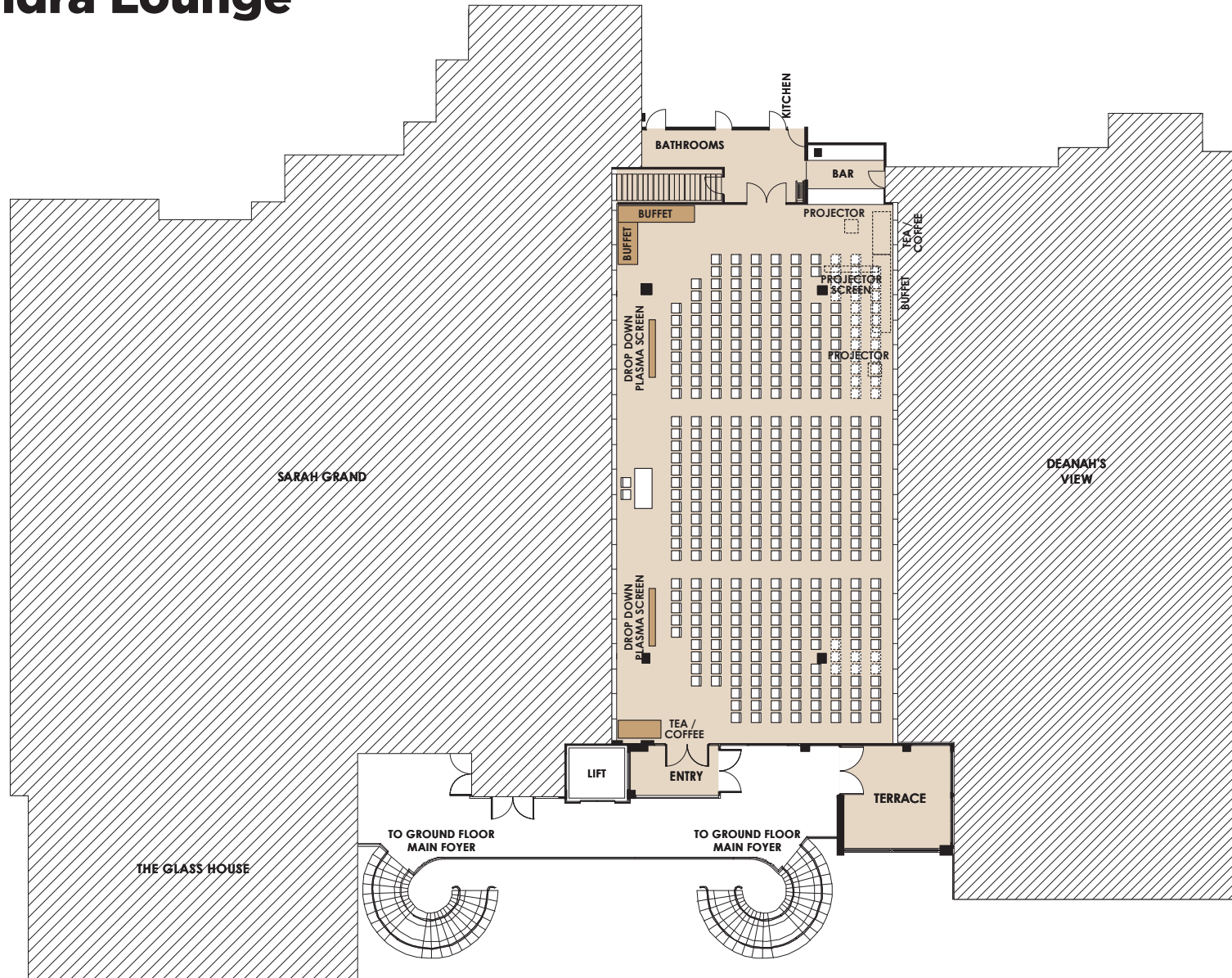
### FOR OFFICIAL USE

Event Name

Event Date

Please indicate on your floorplan additional requirements eg. band, photobooth, etc. These are subject to approval by your event stylist and coordinator.

# Alexandra Lounge



Room Info



Room Specs



AV Specs

## CAPACITIES



Dinner & Dance  
120 - 250



Banquet Dinner  
120 - 290



Cocktail Party  
180 - 360



Theatre Seating 1  
120 - 360



Theatre Seating 2  
120 - 360

### FOR OFFICIAL USE

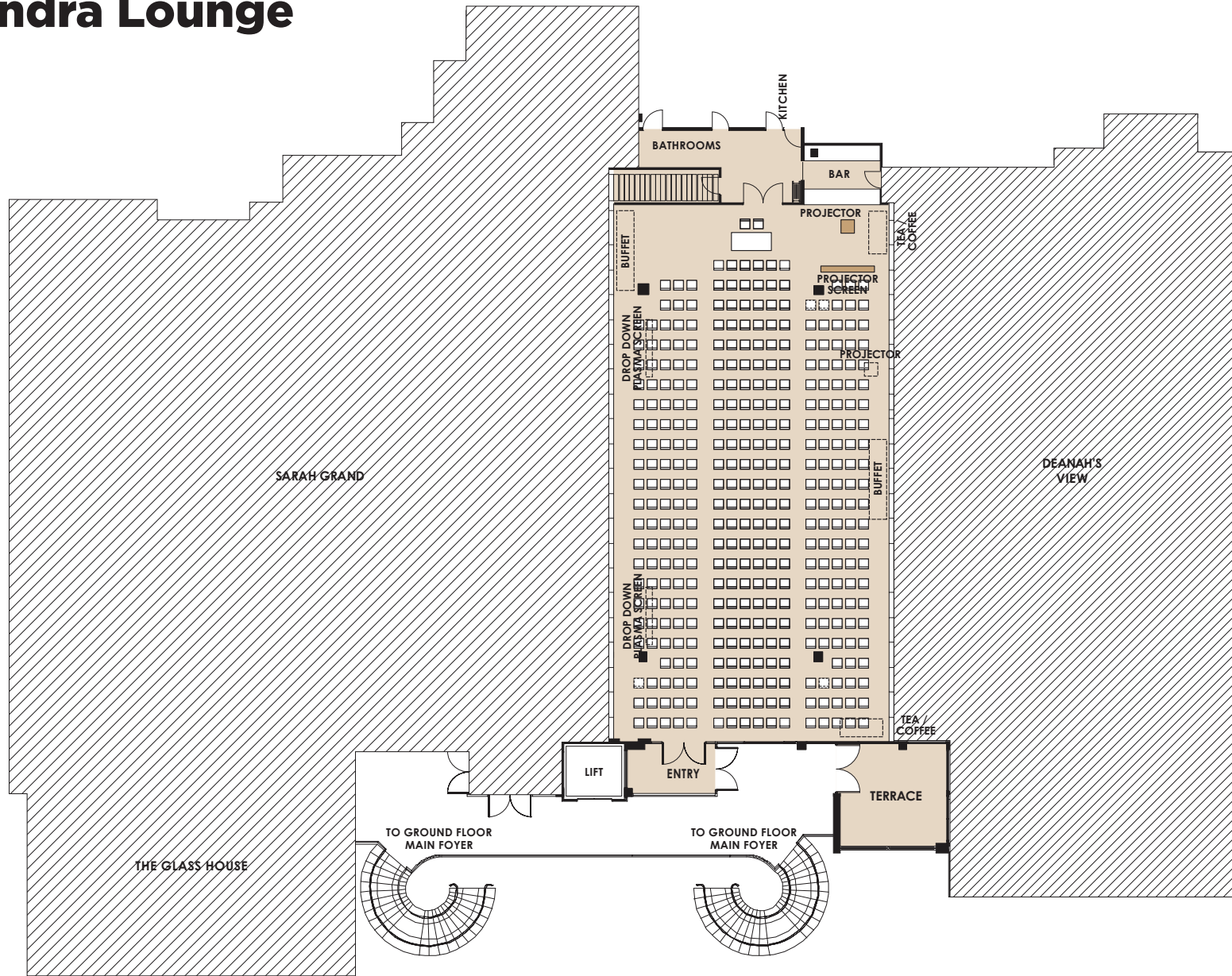
Event Name

Event Date

Please indicate on your floorplan additional requirements eg. band, photobooth, etc. These are subject to approval by your event stylist and coordinator.



# Alexandra Lounge



Room Info



Room Specs



AV Specs

## CAPACITIES



Dinner & Dance  
120 - 250



Banquet Dinner  
120 - 290



Cocktail Party  
180 - 360



Theatre Seating 1  
120 - 360



Theatre Seating 2  
120 - 360

### FOR OFFICIAL USE

Event Name

Event Date

Please indicate on your floorplan additional requirements eg. band, photobooth, etc. These are subject to approval by your event stylist and coordinator.