

CURZON HALL

# SIR PHILLIP LOUNGE

FACT SHEET & FLOOR PLANS

CURZON HALL  
**Sir Phillip Lounge**

**NAVARRA**  
EST 1973



**FEATURES**

- Contemporary and elegant event room
- Exclusive views of lush garden scapes
- Designer interiors
- Custom crystal chandeliers
- Geometrical coffer ceiling creating height
- Large in-built parquet dancefloor
- Outdoor sandstone terrace
- Welcome drinks area
- Part of Lady Mary's Pavilion

**CONTACT US**

- Curzon Hall  
53 Agincourt Road  
Marsfield, NSW 2122
- 02 9887 1877  
curzonhall@navarra.com.au  
navarra.com.au



Room Info



Room Specs



AV Specs

**CAPACITIES**



Dinner & Dance  
**140 – 260**



Banquet Dinner  
**140 – 280**



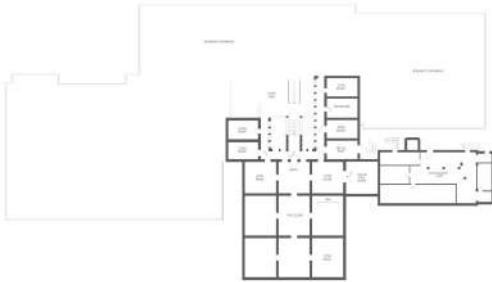
Cocktail Party  
**210 – 410**



Theatre Seating  
**140 – 330**

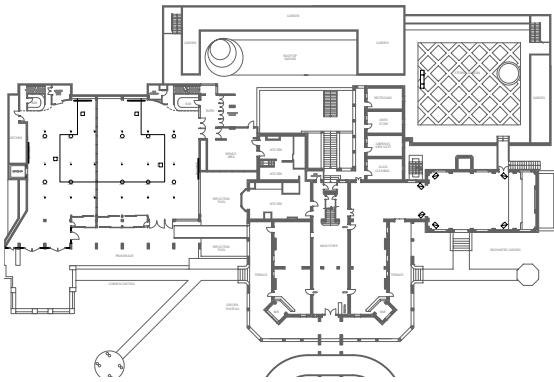
VENUE MAP

LOWER GROUND LEVEL

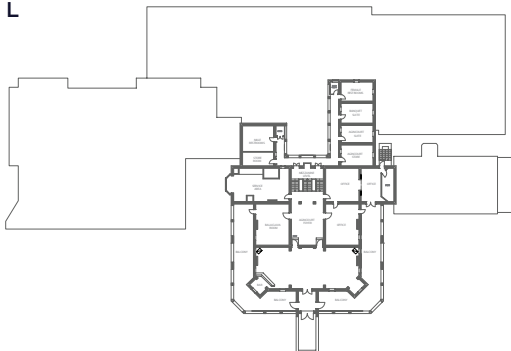


GROUND LEVEL

■ Sir Phillip Lounge



LEVEL ONE

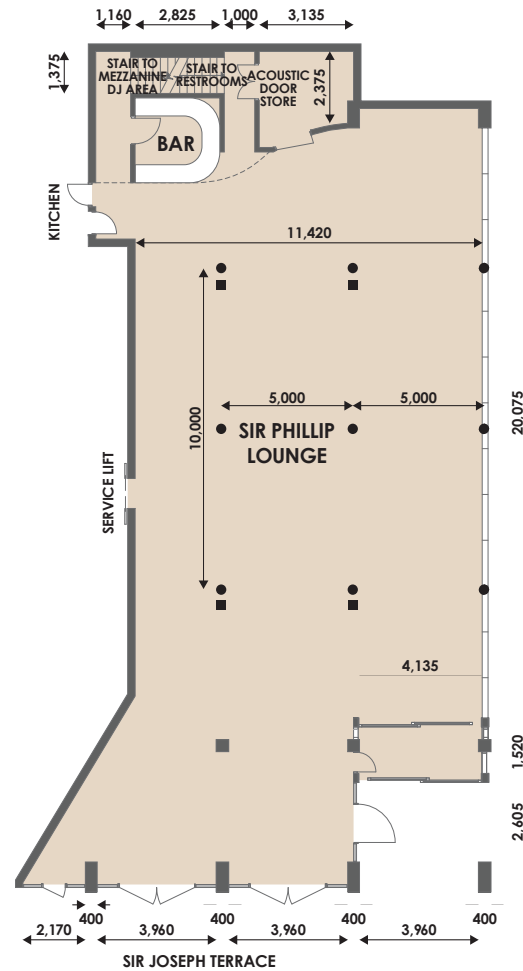


ROOM SPECS

■ Ceiling Height  
5.42 m

■ Floor Area  
227 m<sup>2</sup>

■ Dance Floor Area  
4.00 m x 7.86 m



LEGEND

● Ceiling Bar

● Ceiling Rigging  
(Chain and Hook)

■ Moving Heads



Room Info



Room Specs



AV Specs

CAPACITIES



Dinner & Dance  
140 – 260



Banquet Dinner  
140 – 280



Cocktail Party  
210 – 410

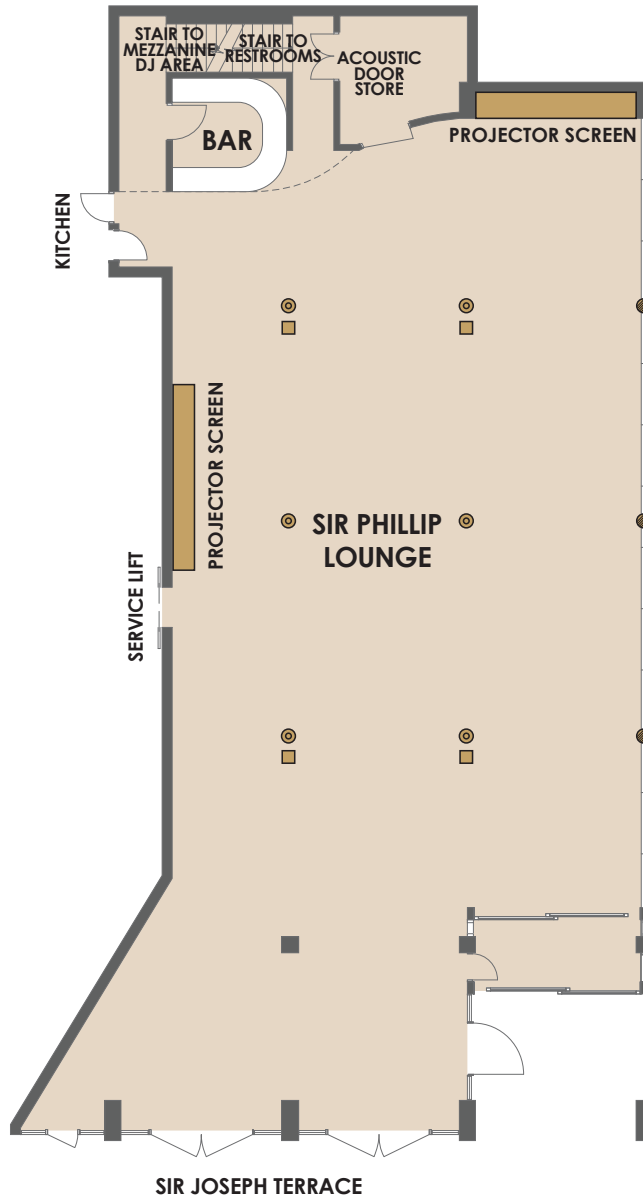


Theatre Seating  
140 – 330

# Sir Phillip Lounge

## LEGEND

- Ceiling Bar
- Ceiling Rigging (Chain and Hook)
- Moving Heads
- ▬ Screens
- Projectors



Room Info



Room Specs



AV Specs

## CAPACITIES



Dinner & Dance  
140 – 260



Banquet Dinner  
140 – 280



Cocktail Party  
210 – 410



Theatre Seating  
140 – 330

**CURZON HALL**  
**Sir Phillip Lounge**

**NAVARRA**

EST 1973




**PAX PER TABLE**

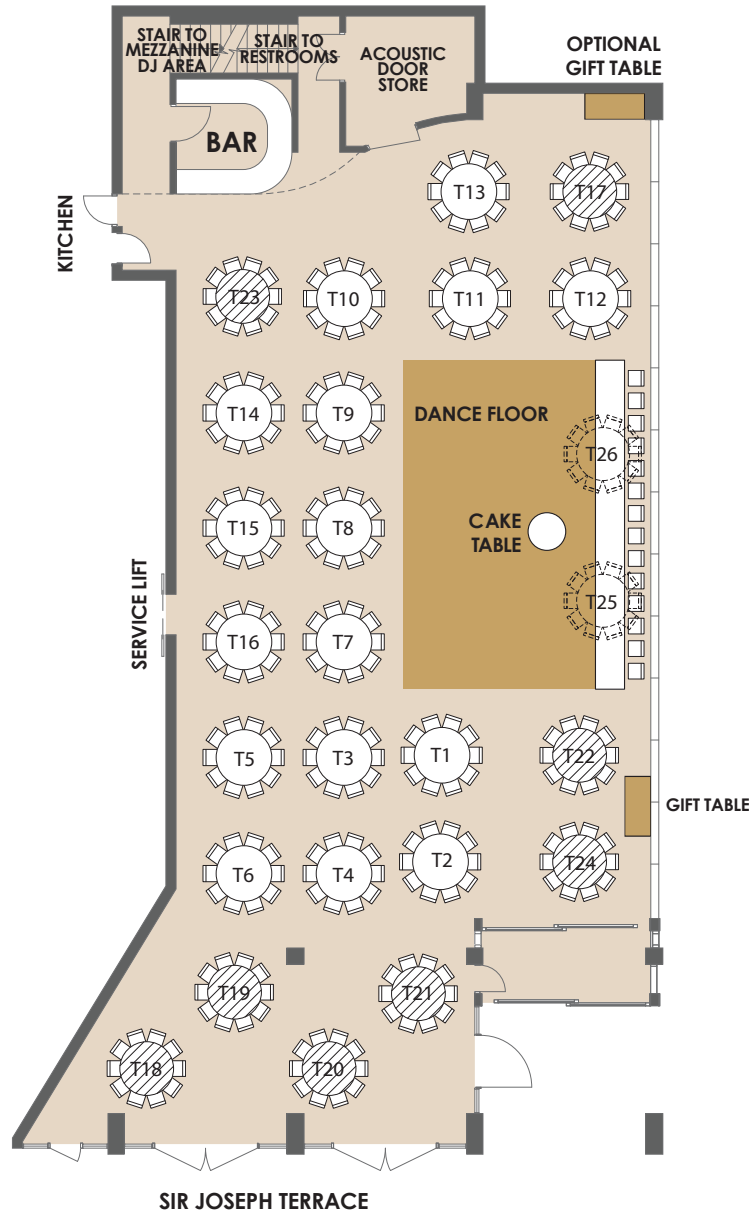
- Round Tables  
8 Min - 10 Max
- VIP/Bridal Table  
10 Max

**SUITABLE FOR**

- Weddings
- Gala Dinners

**LEGEND**

-  Round Table
-  Don't use unless necessary
-  Alternative arrangement using Round Table instead



Room Info



Room Specs



AV Specs

**CAPACITIES**



Dinner & Dance  
140 - 260



Banquet Dinner  
140 - 280



Cocktail Party  
210 - 410



Theatre Seating  
140 - 330

**FOR OFFICIAL USE**

Event Name

Event Date

Please indicate on your floorplan additional requirements eg. band, photobooth, etc. These are subject to approval by your event stylist and coordinator.

**CURZON HALL**  
**Sir Phillip Lounge**

**NAVARRA**

EST 1973

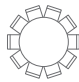


**PAX PER TABLE**

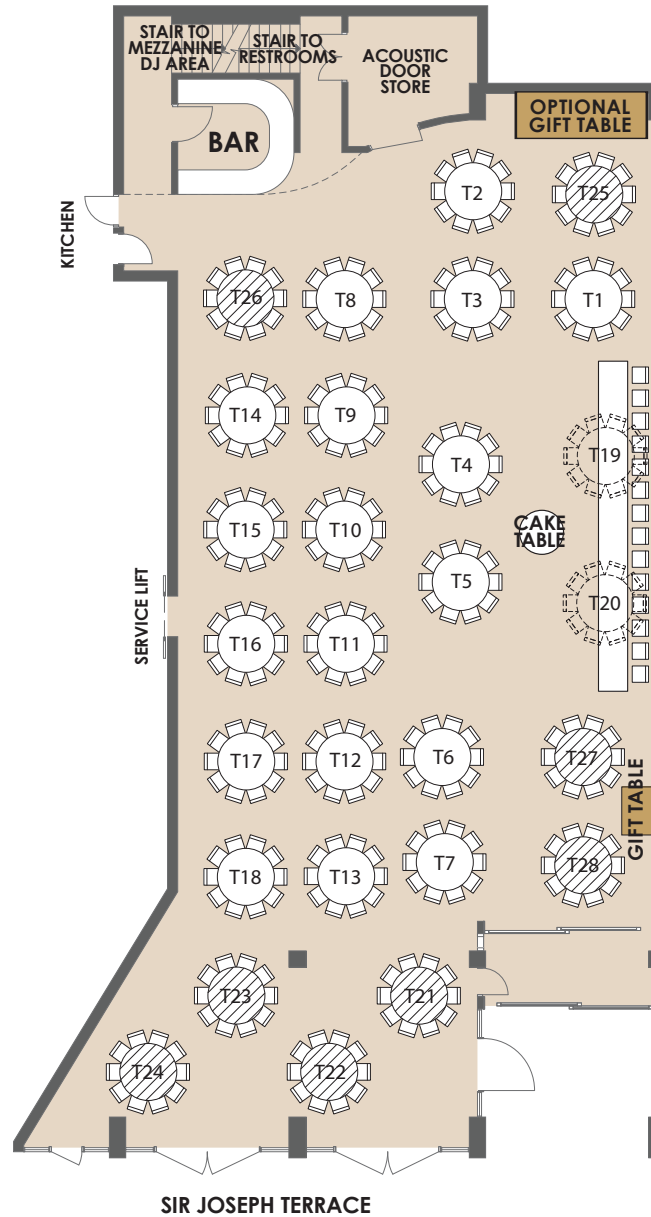
- Round Tables  
8 Min - 10 Max

**SUITABLE FOR**

- Corporate Events

**LEGEND**

-  Round Table
-  Don't use unless necessary
-  Alternative arrangement using Round Table instead



**FOR OFFICIAL USE**

Event Name

Event Date

Please indicate on your floorplan additional requirements eg. band, photobooth, etc. These are subject to approval by your event stylist and coordinator.



Room Info



Room Specs



AV Specs

**CAPACITIES**



Dinner & Dance  
140 - 260



Banquet Dinner  
140 - 280

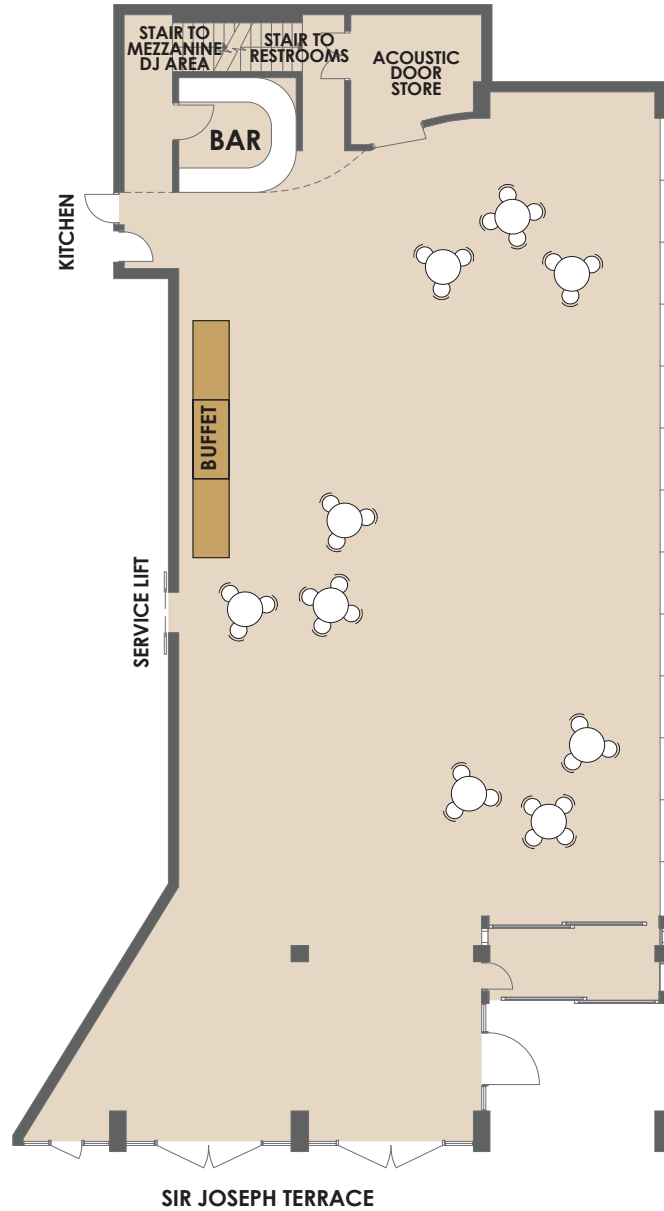


Cocktail Party  
210 - 410



Theatre Seating  
140 - 330

# Sir Phillip Lounge



Room Info



Room Specs



AV Specs

## CAPACITIES



Dinner & Dance  
140 – 260



Banquet Dinner  
140 – 280



Cocktail Party  
210 – 410



Theatre Seating  
140 – 330

### FOR OFFICIAL USE

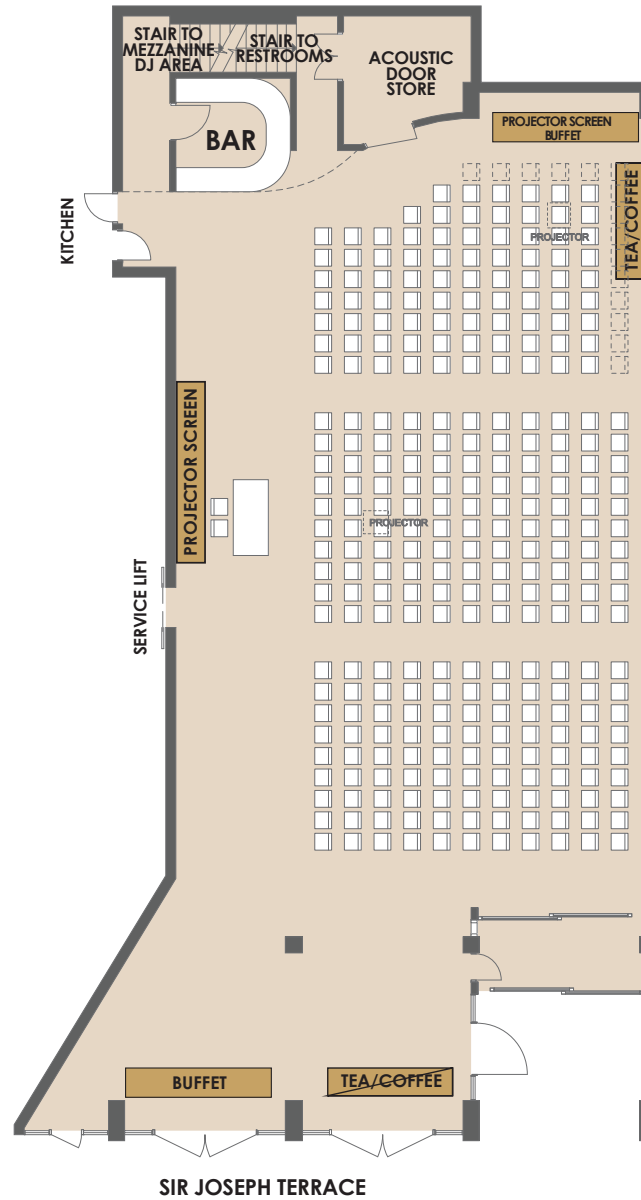
Event Name

Event Date

Please indicate on your floorplan additional requirements eg. band, photobooth, etc. These are subject to approval by your event stylist and coordinator.



# Sir Phillip Lounge



Room Info



Room Specs



AV Specs

## CAPACITIES



Dinner & Dance  
140 – 260



Banquet Dinner  
140 – 280



Cocktail Party  
210 – 410



Theatre Seating  
140 – 330

### FOR OFFICIAL USE

Event Name

Event Date

Please indicate on your floorplan additional requirements eg. band, photobooth, etc. These are subject to approval by your event stylist and coordinator.