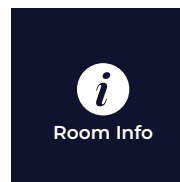


CURZON HALL

# SABRINAS VIEW

FACT SHEET & FLOOR PLANS



Room Info



Room Specs



AV Specs

## CAPACITIES



Dinner & Dance  
220 – 320



Banquet Dinner  
220 – 380



Cocktail Party  
330 – 470



Theatre Seating  
220 – 485

## FEATURES

- Contemporary and elegant event room
- Exclusive views of lush garden scapes
- Designer interiors
- Custom crystal chandeliers
- Geometrical coffer ceiling creating height
- Large in-built parquetry dancefloor
- Outdoor promenade, welcome drinks area
- Part of Lady Mary's Pavilion

## CONTACT US

- Curzon Hall  
53 Agincourt Road  
Marsfield, NSW 2122
- 02 9887 1877  
curzonhall@navarra.com.au  
navarra.com.au

CURZON HALL  
**Sabrina's View**

**NAVARRA**

EST 1973

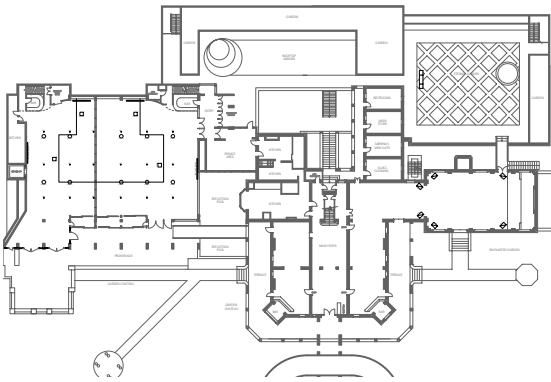
VENUE MAP

LOWER GROUND LEVEL

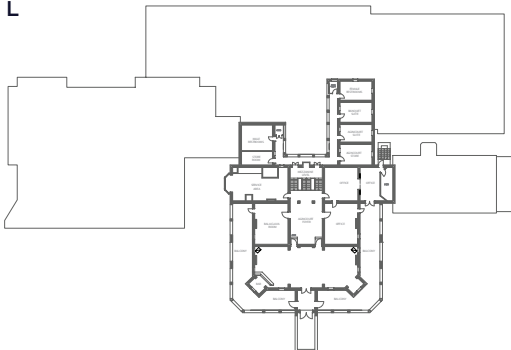


GROUND LEVEL

■ Sabrina's View



LEVEL ONE

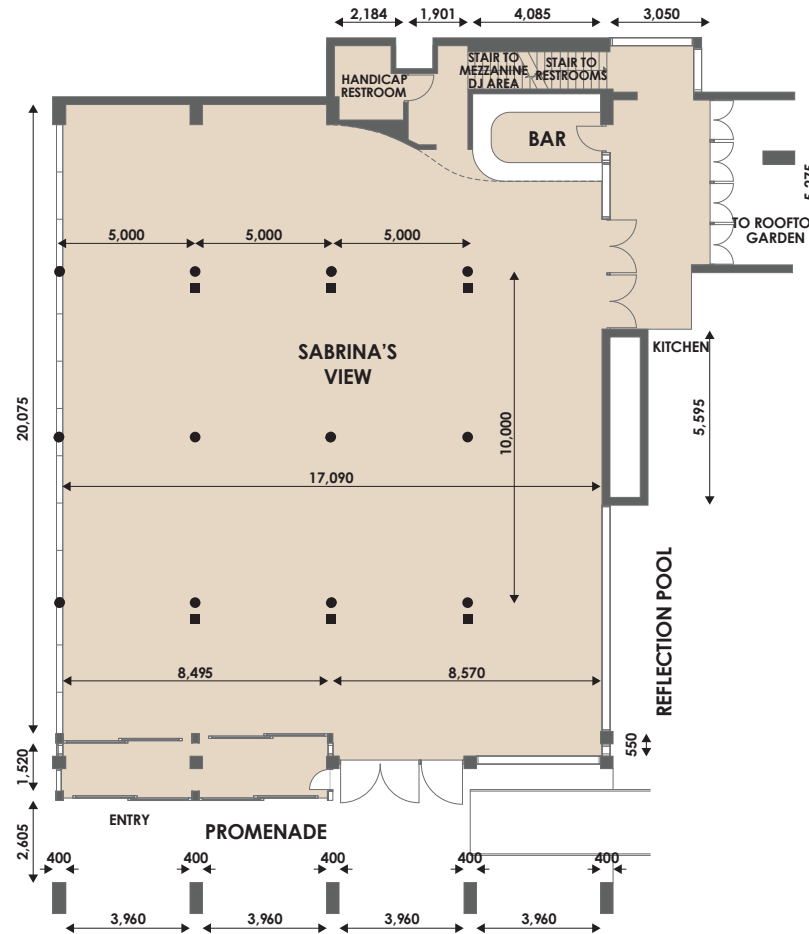


ROOM SPECS

■ Ceiling Height  
5.42 m

■ Floor Area  
335 m<sup>2</sup>

■ Dance Floor Area  
7.68 m x 7.86 m (with carpet)  
9.51 m x 7.86 m (without carpet)



LEGEND

● Ceiling Bar

● Ceiling Rigging  
(Chain and Hook)

■ Moving Heads



Room Info



Room Specs



AV Specs

CAPACITIES



Dinner & Dance  
220 – 320



Banquet Dinner  
220 – 380



Cocktail Party  
330 – 470

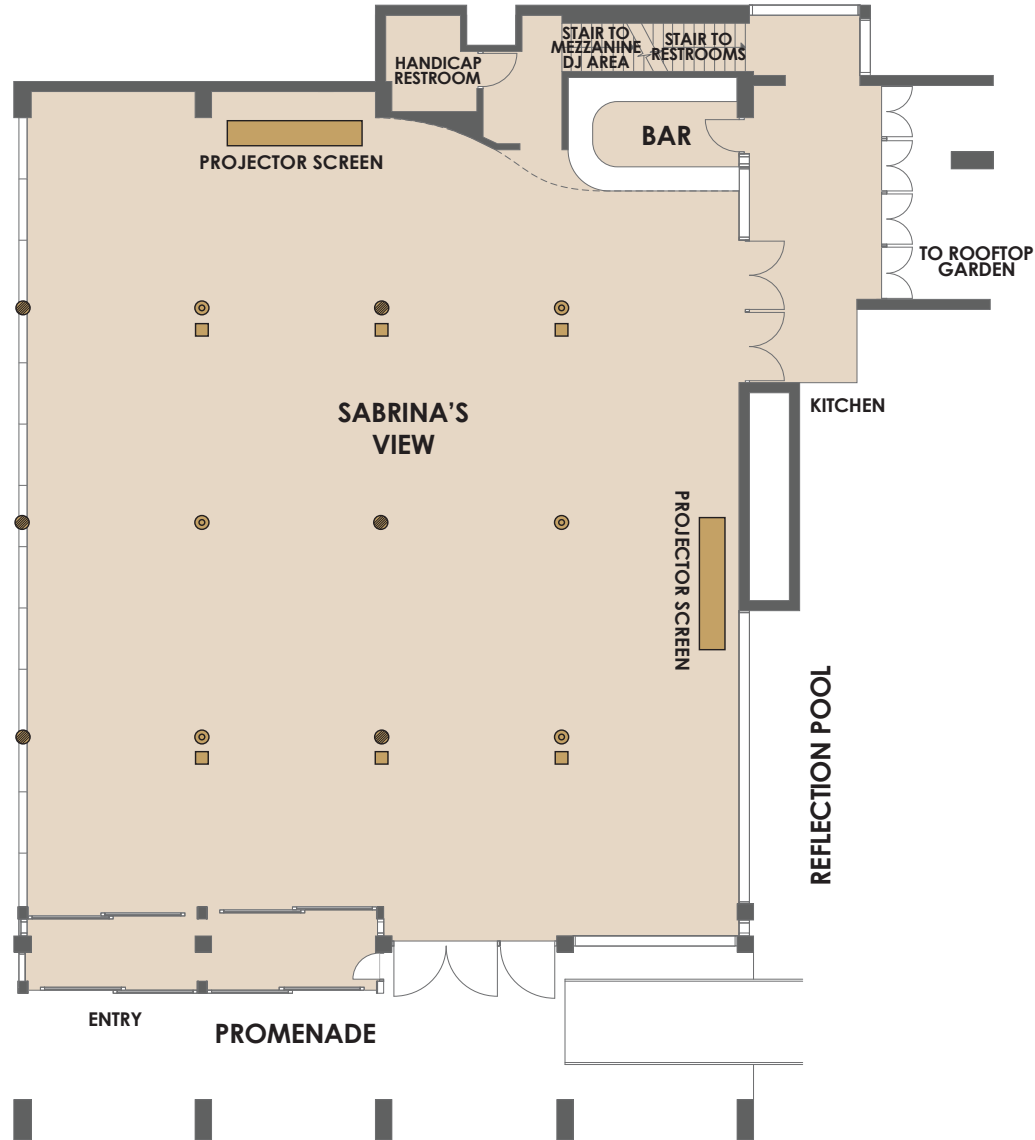


Theatre Seating  
220 – 485

# Sabrina's View

## LEGEND

- Ceiling Bar
- Ceiling Rigging (Chain and Hook)
- Moving Heads
- ▬ Screens
- Projectors



Room Info



Room Specs



AV Specs

## CAPACITIES



Dinner & Dance  
220 – 320



Banquet Dinner  
220 – 380



Cocktail Party  
330 – 470



Theatre Seating  
220 – 485

**CURZON HALL**  
**Sabrina's View**

**NAVARRA**

EST 1973




**PAX PER TABLE**

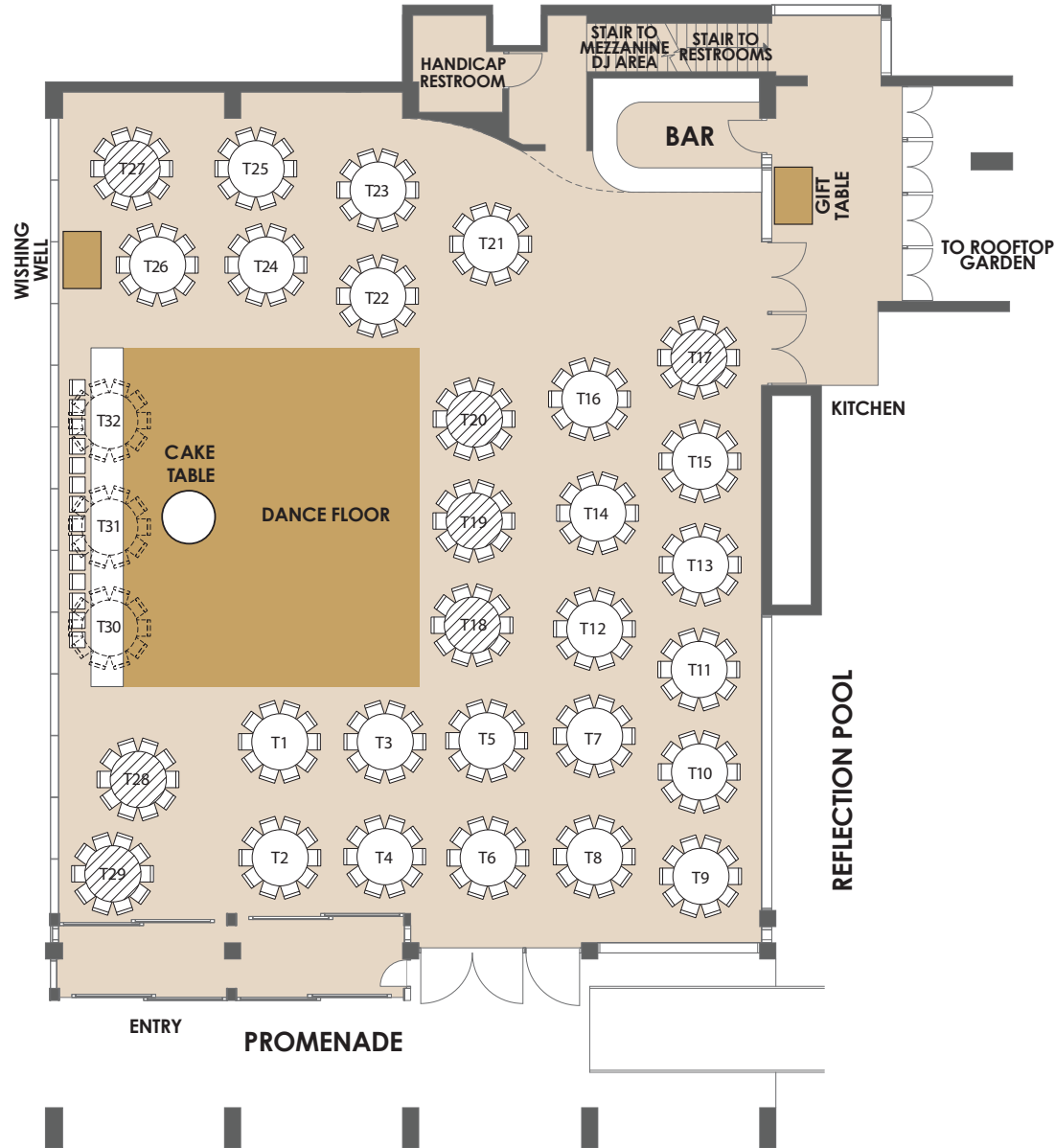
- Round Tables  
8 Min - 10 Max
- VIP/Bridal Table  
14 Max

**SUITABLE FOR**

- Weddings
- Gala Dinners

**LEGEND**

-  Round Table
-  Don't use unless necessary
-  Alternative arrangement using Round Table instead



Room Info



Room Specs



AV Specs

**CAPACITIES**



Dinner & Dance  
220 - 320



Banquet Dinner  
220 - 380



Cocktail Party  
330 - 470



Theatre Seating  
220 - 485

**FOR OFFICIAL USE**

Event Name

Event Date

Please indicate on your floorplan additional requirements eg. band, photobooth, etc. These are subject to approval by your event stylist and coordinator.

**CURZON HALL**  
**Sabrina's View**

**NAVARRA**

EST 1973




**PAX PER TABLE**

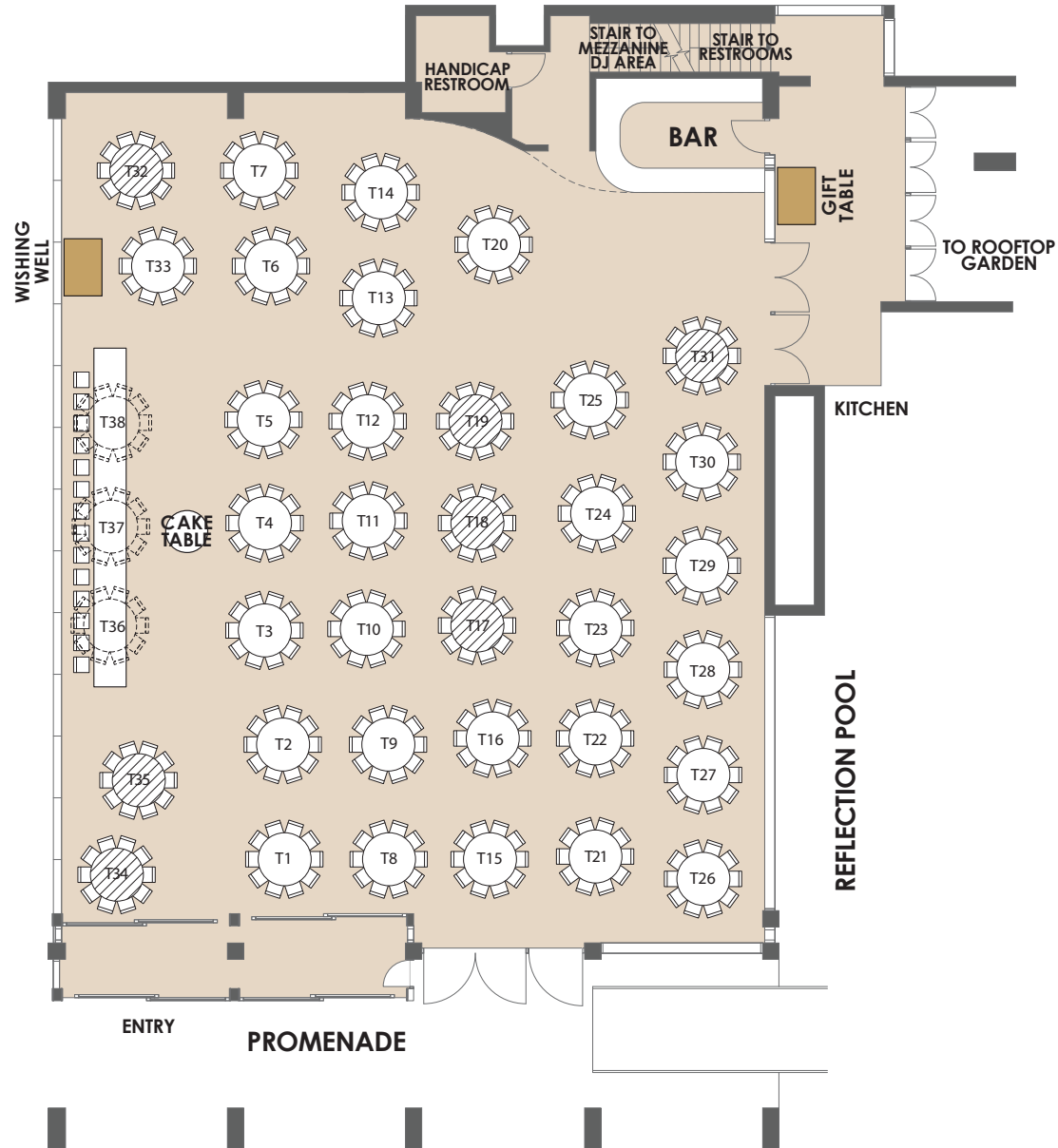
- Round Tables  
8 Min - 10 Max

**SUITABLE FOR**

- Corporate Events

**LEGEND**

-  Round Table
-  Don't use unless necessary
-  Alternative arrangement using Round Table instead



Room Info



Room Specs



AV Specs

**CAPACITIES**



Dinner & Dance  
220 - 320



Banquet Dinner  
220 - 380



Cocktail Party  
330 - 470



Theatre Seating  
220 - 485

**FOR OFFICIAL USE**

Event Name

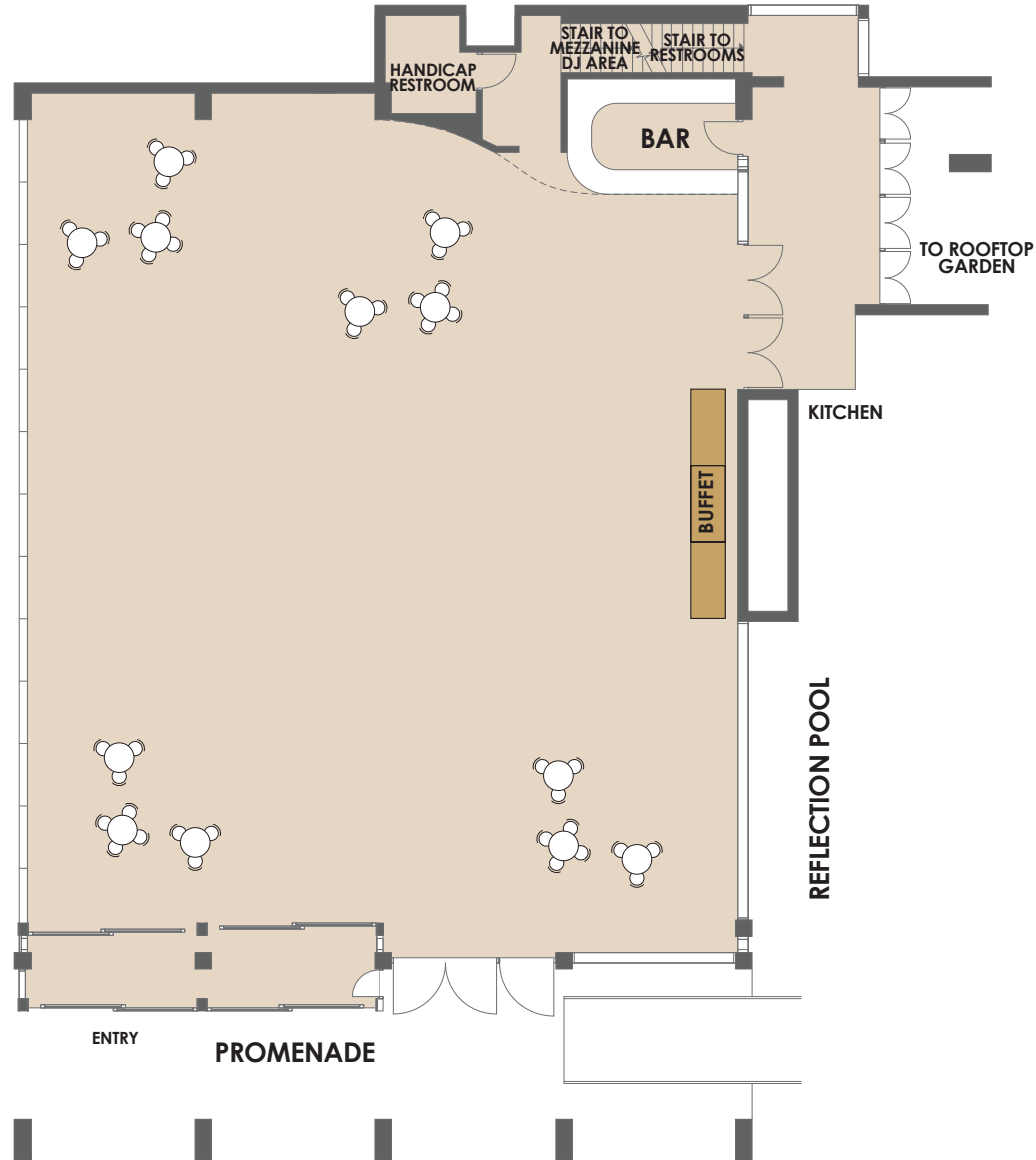
Event Date

Please indicate on your floorplan additional requirements eg. band, photobooth, etc. These are subject to approval by your event stylist and coordinator.

CURZON HALL  
**Sabrina's View**

**NAVARRA**

EST 1973



Room Info



Room Specs



AV Specs

**CAPACITIES**



Dinner & Dance  
**220 – 320**



Banquet Dinner  
**220 – 380**



Cocktail Party  
**330 – 470**



Theatre Seating  
**220 – 485**

**FOR OFFICIAL USE**

Event Name

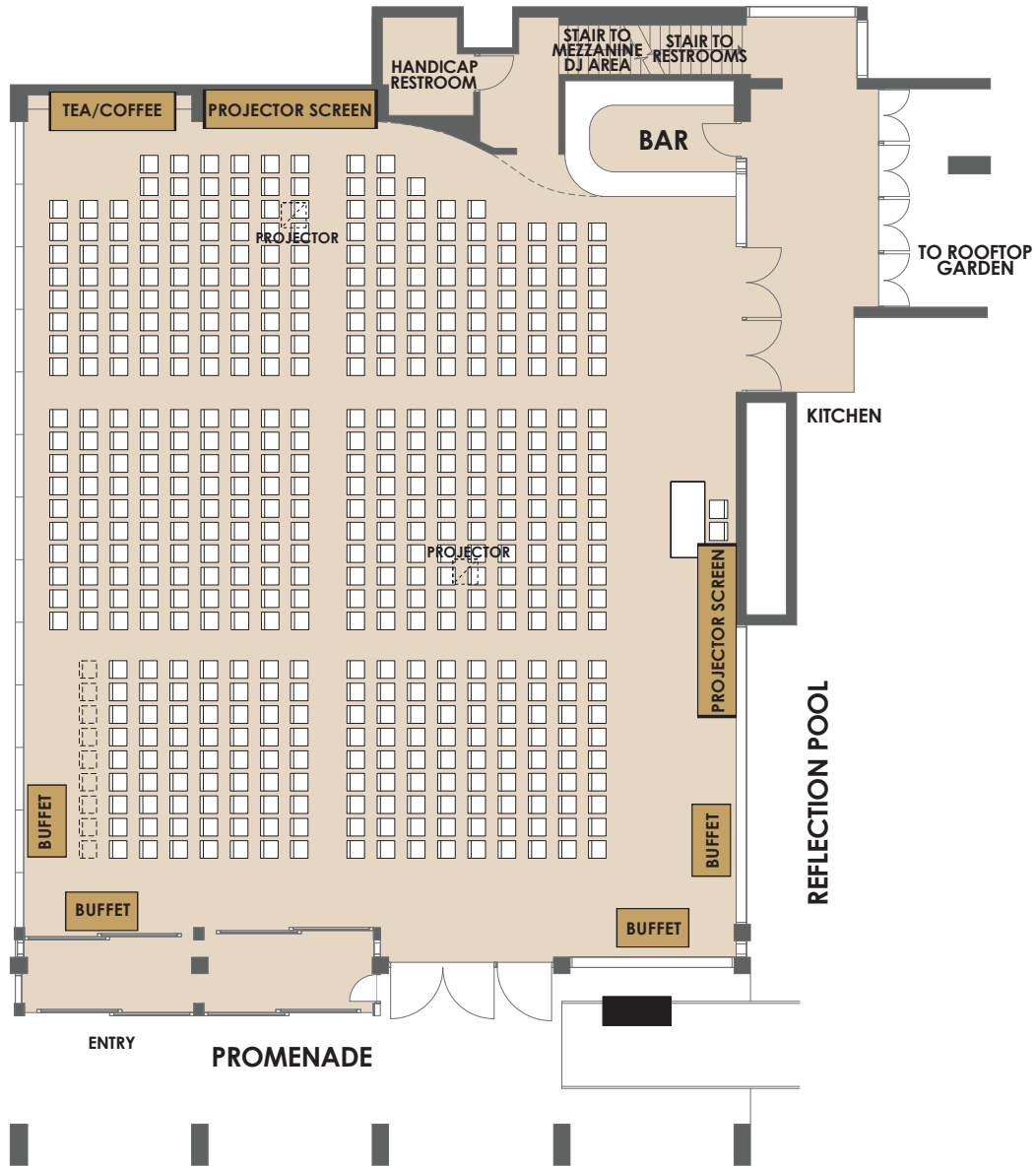
Event Date

Please indicate on your floorplan additional requirements eg. band, photobooth, etc. These are subject to approval by your event stylist and coordinator.

CURZON HALL  
**Sabrina's View**

**NAVARRA**

EST 1973



Room Info



Room Specs



AV Specs

**CAPACITIES**



Dinner & Dance  
 220 – 320



Banquet Dinner  
 220 – 380



Cocktail Party  
 330 – 470



Theatre Seating  
 220 – 485

**FOR OFFICIAL USE**

Event Name

Event Date

Please indicate on your floorplan additional requirements eg. band, photobooth, etc. These are subject to approval by your event stylist and coordinator.