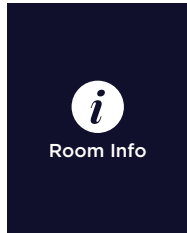


CURZON HALL

# BANQUET ROOM

FACT SHEET & FLOOR PLANS

# Banquet Room



Room Info



Room Specs

## CAPACITIES



Dinner & Dance  
150 - 270



Banquet Dinner  
150 - 300



Cocktail Party  
225 - 470

## FEATURES

- Reminiscent of late 1800s architecture
- Grand crystal chandeliers
- Original marble and heritage tile feature
- Embellished 8-meter high ceiling
- Stained-glass windows
- Pillar-less ballroom
- Ornate gilded mirrors
- Isabella Room for welcome drinks
- Adjoining heritage gardens and terraces

## CONTACT US

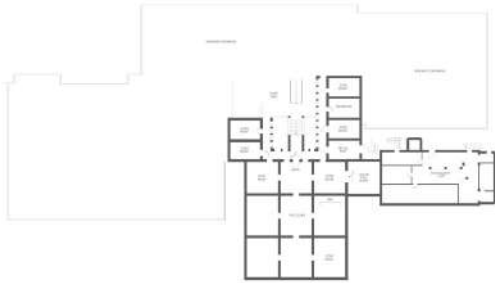
- Curzon Hall  
53 Agincourt Road  
Marsfield, NSW 2122
- 02 9887 1877  
curzonhall@navarra.com.au  
navarra.com.au

  
Theatre Seating  
150 - 360

# Banquet Room

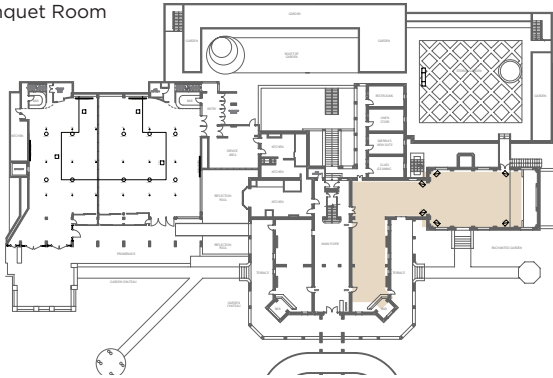
## VENUE MAP

### LOWER GROUND LEVEL

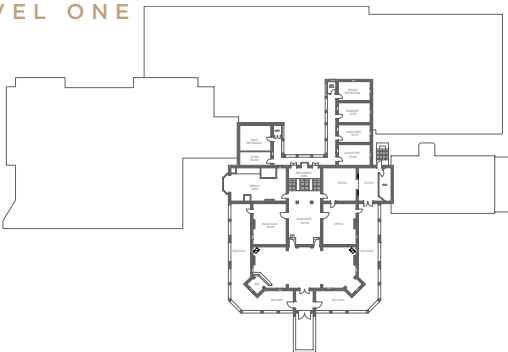


### GROUND LEVEL

■ Banquet Room



### LEVEL ONE



## ROOM SPECS

■ Ceiling Height  
4.95 m / 8.10 m

■ Floor Area  
334 m<sup>2</sup>

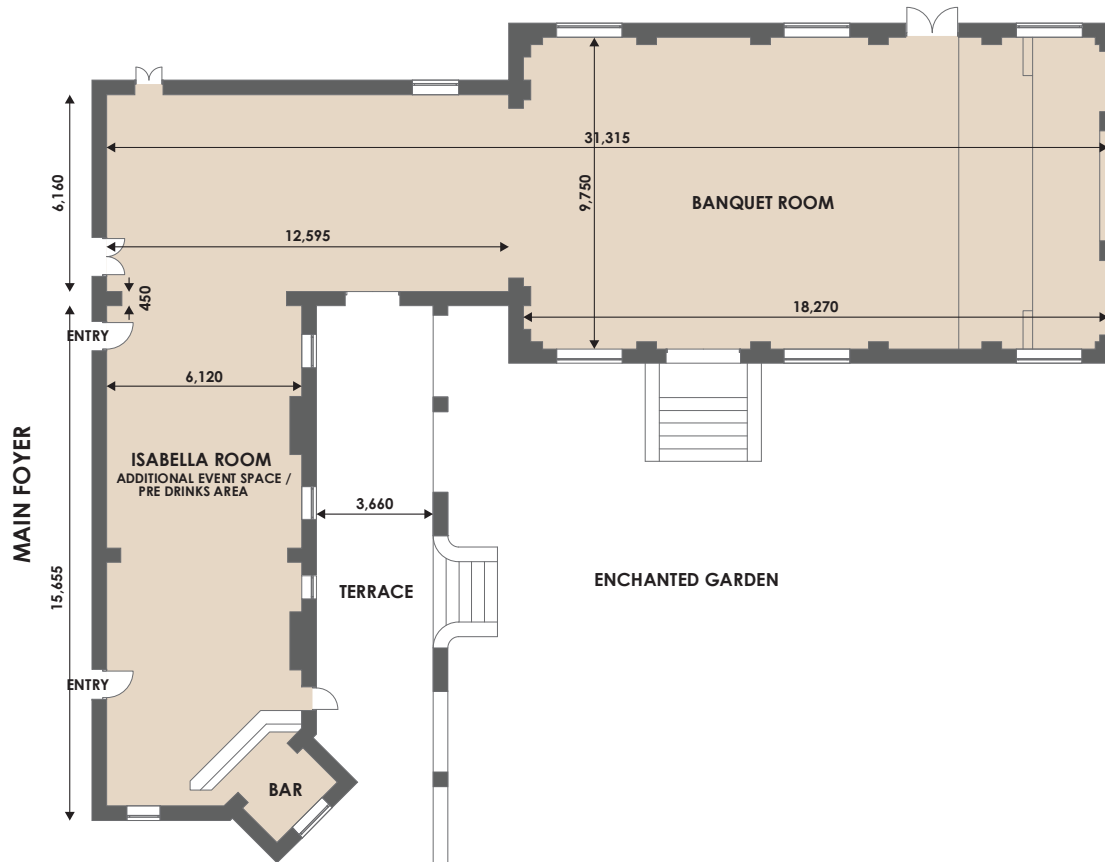
■ Dance Floor Area  
8.70 m x 4.20 m



Room Info



Room Specs



## CAPACITIES



Dinner & Dance  
150 - 270



Banquet Dinner  
150 - 300



Cocktail Party  
225 - 470



Theatre Seating  
150 - 360

# Banquet Room

**PAX PER TABLE**

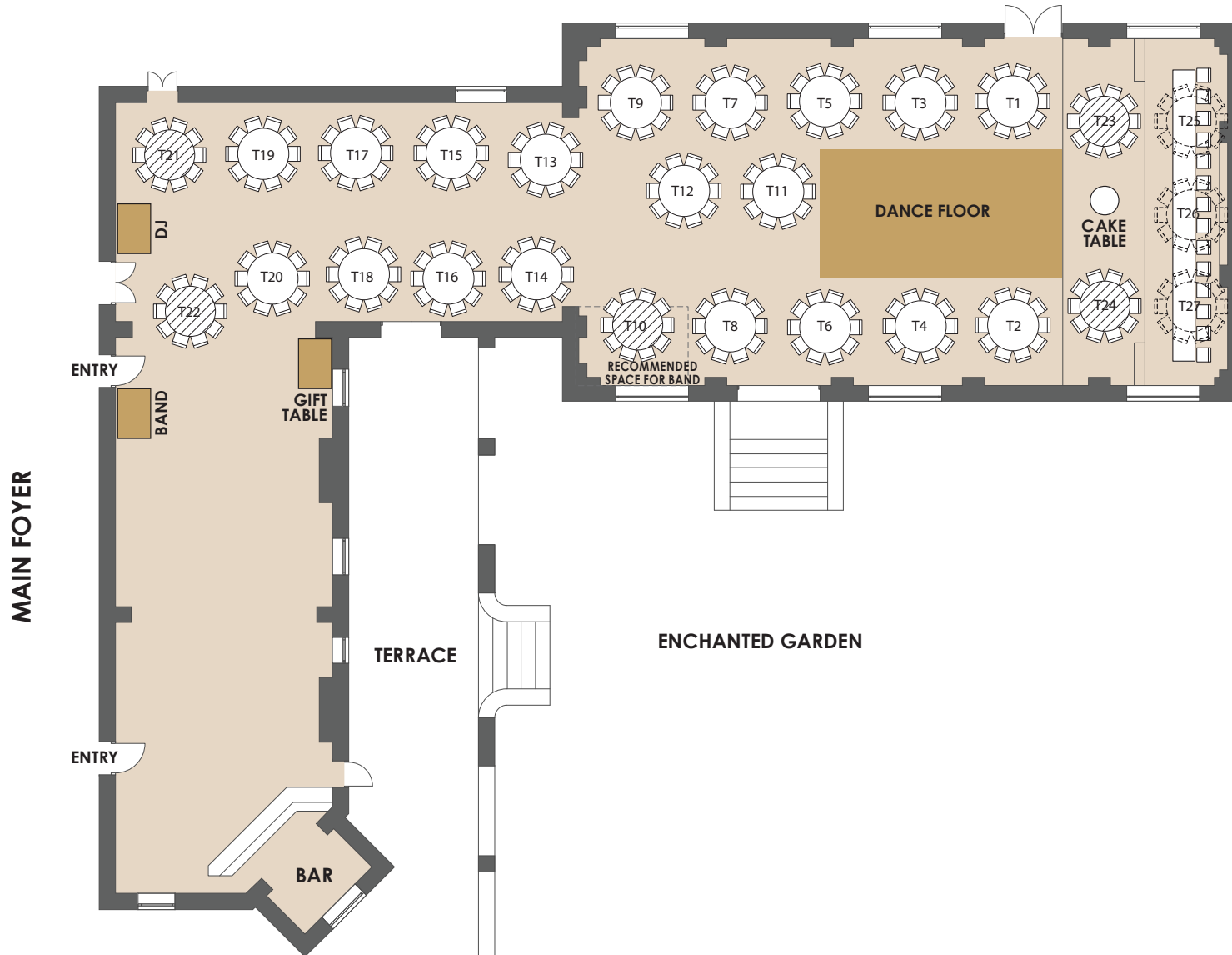
- Round Tables  
8 Min - 10 Max
- VIP/Bridal Table  
14 Max

**SUITABLE FOR**

- Weddings
- Gala Dinners

**LEGEND**

- Round Table
- Don't use unless necessary
- Alternative arrangement using Round Table instead



Room Info



Room Specs

**CAPACITIES**



Dinner & Dance  
150 - 270



Banquet Dinner  
150 - 300



Cocktail Party  
225 - 470



Theatre Seating  
150 - 360

**FOR OFFICIAL USE**

Event Name

Event Date

Please indicate on your floorplan additional requirements eg. band, photobooth, etc. These are subject to approval by your event stylist and coordinator.

# Banquet Room

**PAX PER TABLE**

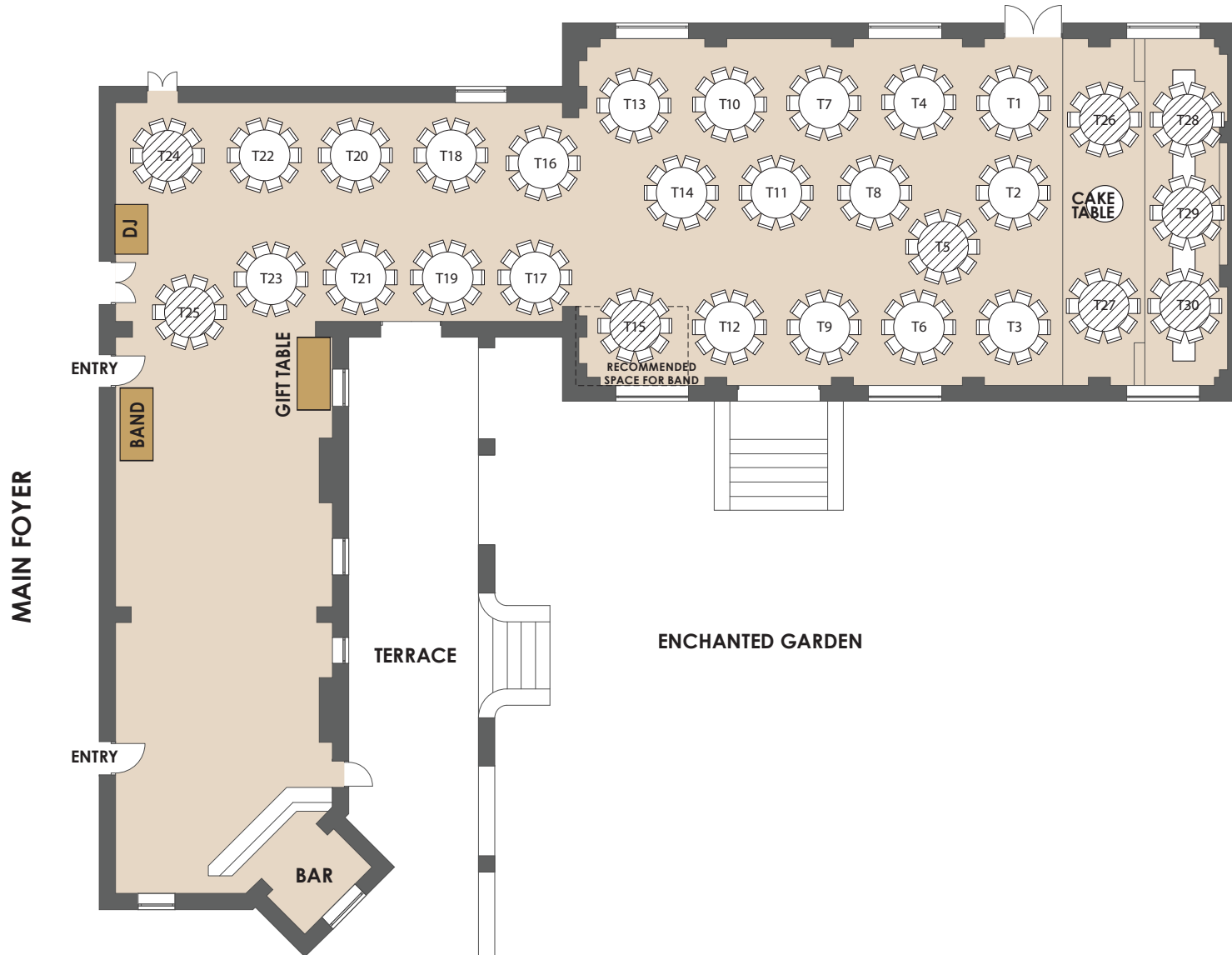
- Round Tables  
8 Min - 10 Max

**SUITABLE FOR**

- Corporate Events

**LEGEND**

- Round Table
- Don't use unless necessary
- Alternative arrangement using Round Table instead



Room Info



Room Specs

**CAPACITIES**



Dinner & Dance  
150 - 270



Banquet Dinner  
150 - 300



Cocktail Party  
225 - 470



Theatre Seating  
150 - 360

**FOR OFFICIAL USE**

Event Name

Event Date

Please indicate on your floorplan additional requirements eg. band, photobooth, etc. These are subject to approval by your event stylist and coordinator.

# Banquet Room



Room Info



Room Specs

### CAPACITIES



Dinner & Dance  
150 - 270



Banquet Dinner  
150 - 300



Cocktail Party  
225 - 470



Theatre Seating  
150 - 360

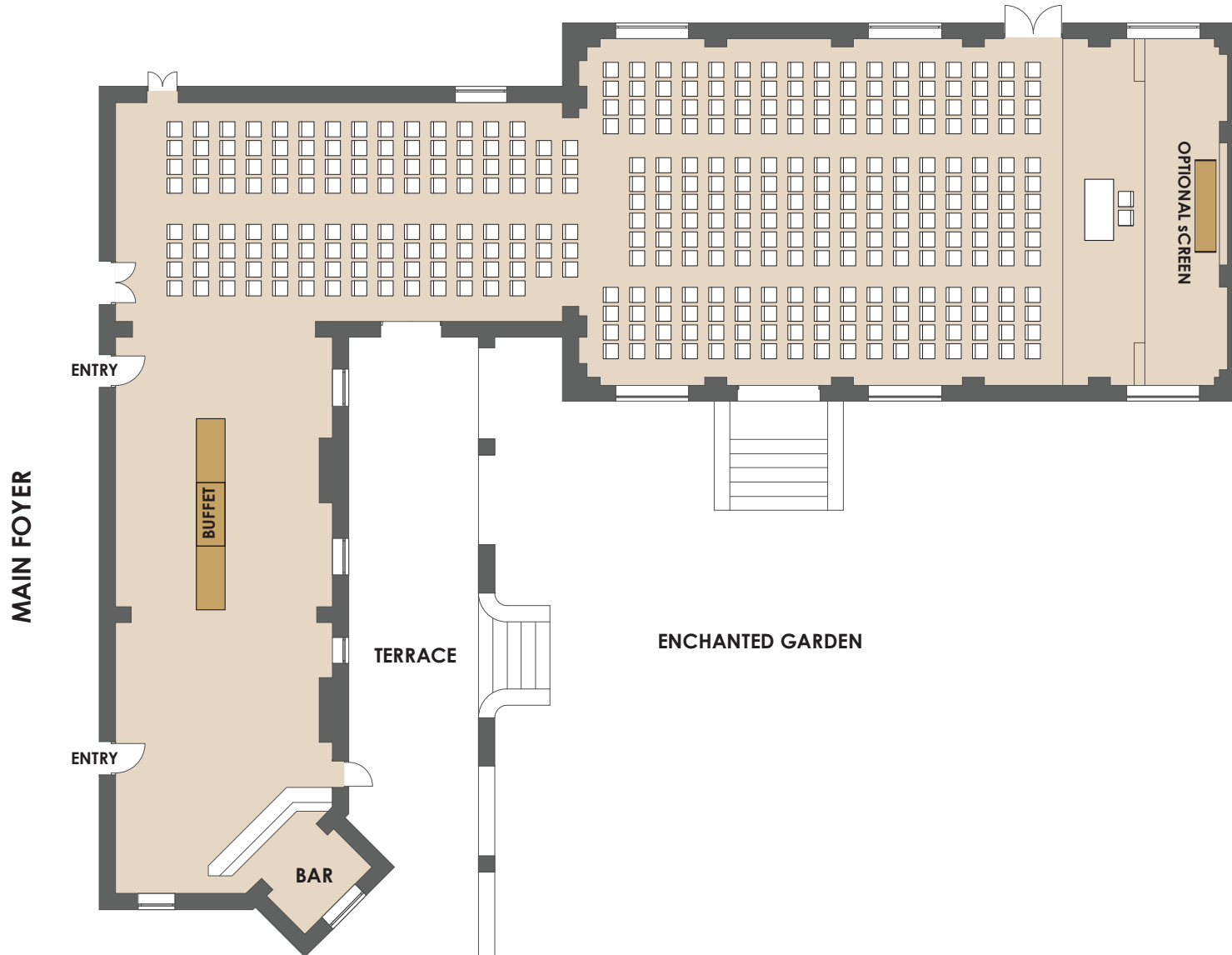
#### FOR OFFICIAL USE

Event Name

Event Date

Please indicate on your floorplan additional requirements eg. band, photobooth, etc. These are subject to approval by your event stylist and coordinator.

# Banquet Room



Room Info



Room Specs

## CAPACITIES



Dinner & Dance  
150 - 270



Banquet Dinner  
150 - 300



Cocktail Party  
225 - 470



Theatre Seating  
150 - 360

### FOR OFFICIAL USE

Event Name

Event Date

Please indicate on your floorplan additional requirements eg. band, photobooth, etc. These are subject to approval by your event stylist and coordinator.