

CONCA D'ORO

# THE RENOIR

FACT SHEET & FLOOR PLANS



CAPACITIES

  
Dinner & Dance  
150 - 270

  
Banquet Dinner  
170 - 280

  
Cocktail Party  
100 - 500

  
Theatre Seating  
100 - 400

FEATURES

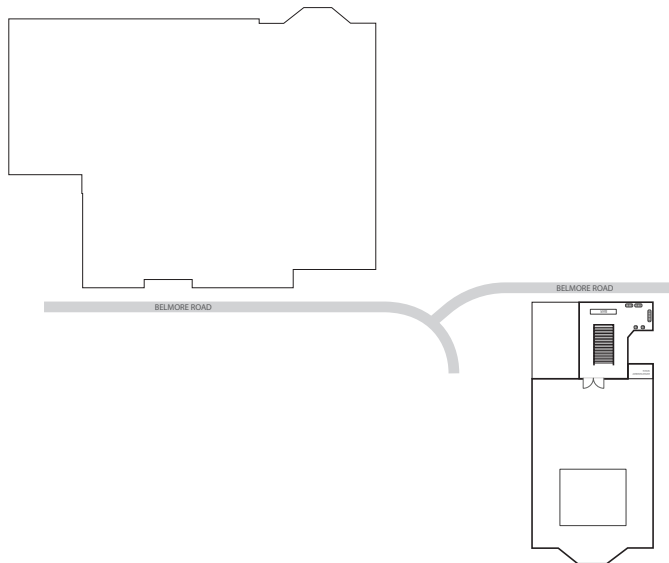
- Elegant foyer for welcome drinks
- A collection of Swarovski crystal chandeliers
- Dark timber panelling
- Silver patterned diamond wallpaper
- Large ornate mirrors throughout ballroom

CONTACT US

- Conca D'oro  
269 Belmore Rd  
Riverwood, NSW 2210
- 02 9153 9932  
concaodoro@navarravenues.com.au  
navarravenues.com.au

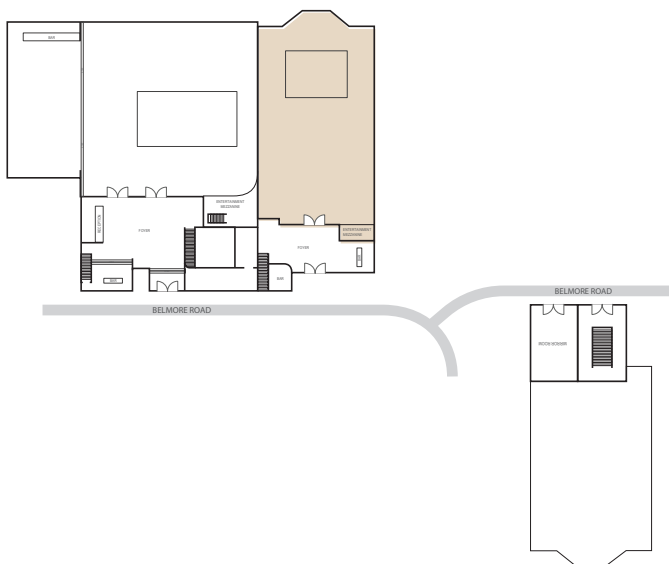
VENUE MAP

LEVEL ONE



GROUND LEVEL

■ The Renoir

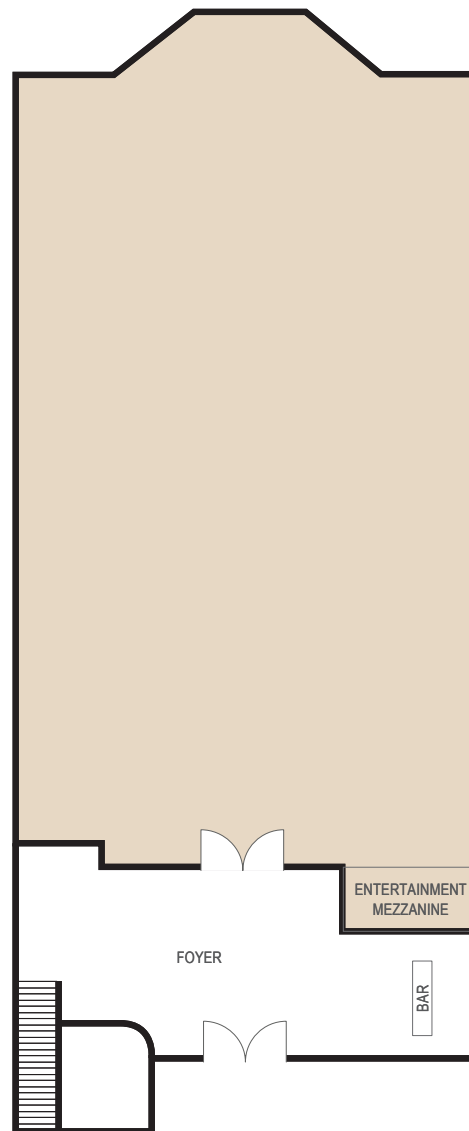


ROOM SPECS

■ Ceiling Height  
4.1 m

■ Floor Area  
260 m<sup>2</sup>

■ Dance Floor Area  
10.2m x 5.9m



Room Info



Room Specs

CAPACITIES



Dinner & Dance  
150 - 270



Banquet Dinner  
170 - 280



Cocktail Party  
100 - 500



Theatre Seating  
100 - 400

CONCA D'ORO  
The Renoir

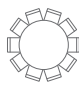


PAX PER TABLE

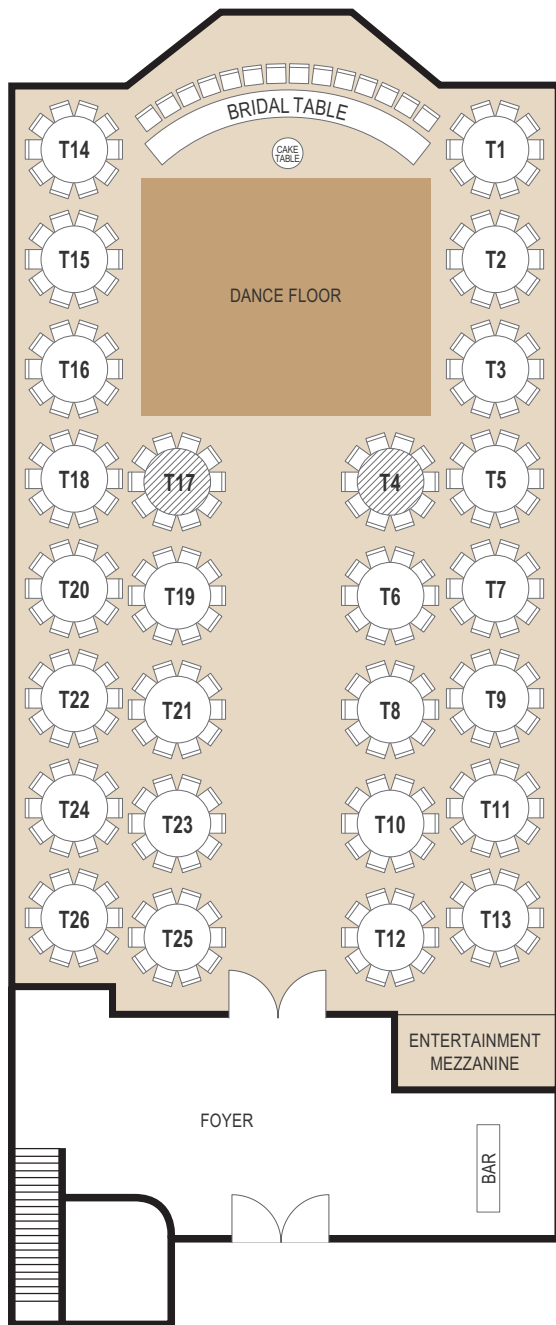
- Round Tables  
8 Min - 10 Max
- VIP/Bridal Table  
18 Max

SUITABLE FOR

- Weddings
- Gala Dinners

LEGEND

-  Round Table
-  Don't use unless necessary
-  Alternative arrangement using Round Table instead



NAVARRA

EST 1973



Room Info



Room Specs

CAPACITIES



Dinner & Dance  
150 - 270



Banquet Dinner  
170 - 280



Cocktail Party  
100 - 500



Theatre Seating  
100 - 400

FOR OFFICIAL USE

Event Name

Event Date

Please indicate on your floorplan additional requirements eg. band, photobooth, etc. These are subject to approval by your event stylist and coordinator.

CONCA D'ORO  
The Renoir

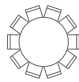


PAX PER TABLE

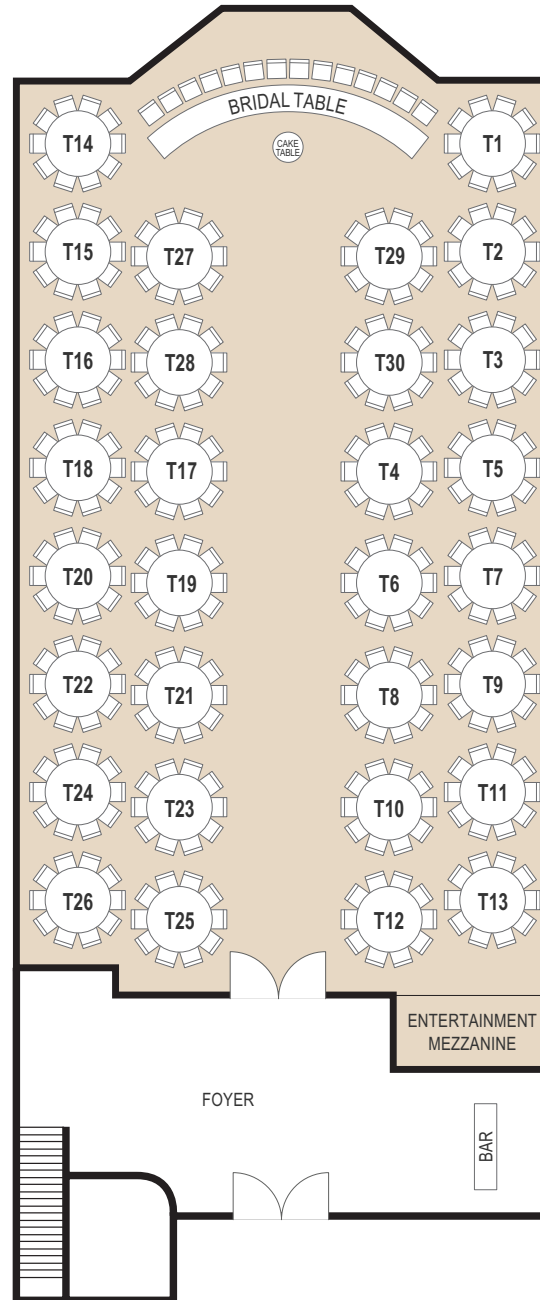
- Round Tables  
8 Min - 10 Max
- VIP/Bridal Table  
18 Max

SUITABLE FOR

- Corporate Events

LEGEND

-  Round Table
-  Don't use unless necessary
-  Alternative arrangement using Round Table instead



NAVARRA

EST 1973



Room Info



Room Specs

CAPACITIES



Dinner & Dance  
150 - 270



Banquet Dinner  
170 - 280



Cocktail Party  
100 - 500



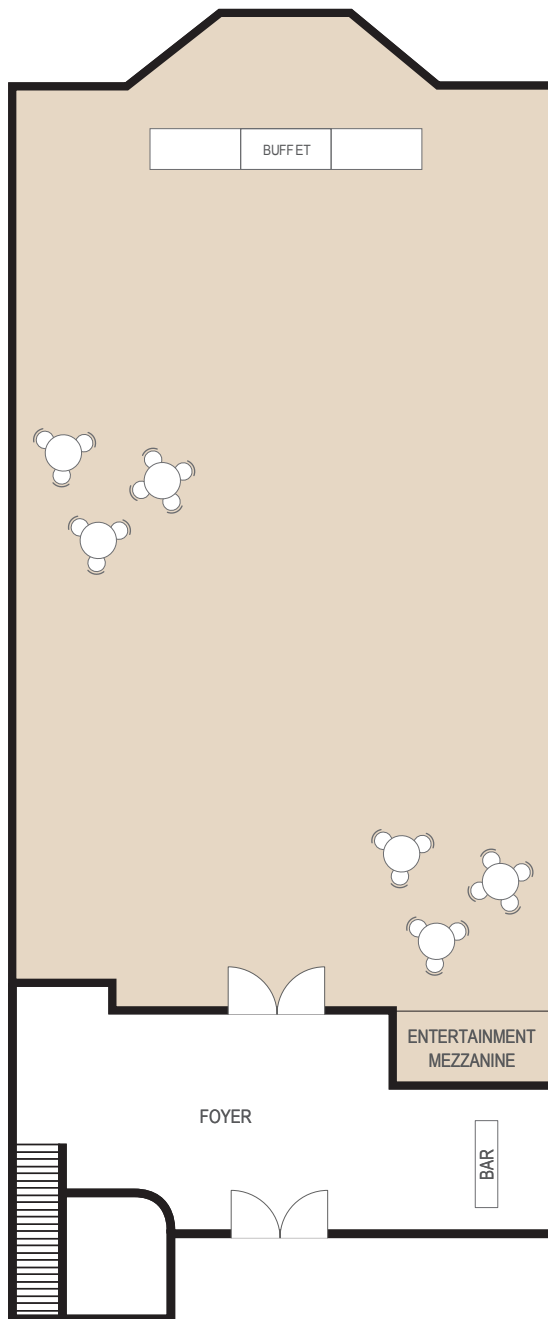
Theatre Seating  
100 - 400

FOR OFFICIAL USE

Event Name

Event Date

Please indicate on your floorplan additional requirements eg. band, photobooth, etc. These are subject to approval by your event stylist and coordinator.



Room Info



Room Specs

CAPACITIES



Dinner & Dance  
150 - 270



Banquet Dinner  
170 - 280



Cocktail Party  
100 - 500



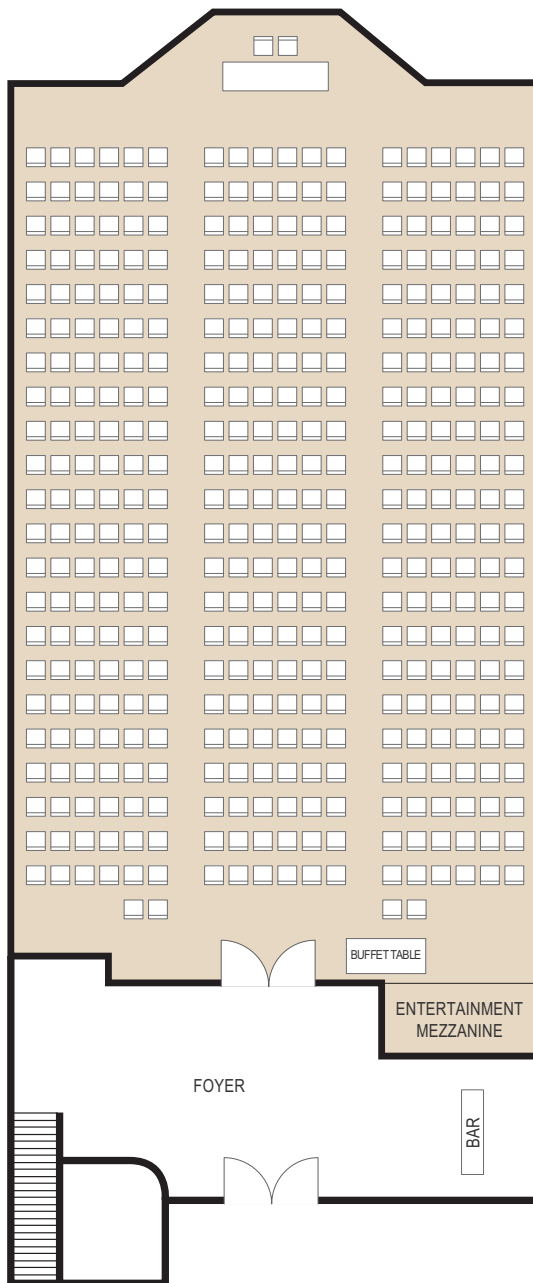
Theatre Seating  
100 - 400

FOR OFFICIAL USE

Event Name

Event Date

Please indicate on your floorplan additional requirements eg. band, photobooth, etc. These are subject to approval by your event stylist and coordinator.



Room Info



Room Specs

CAPACITIES



Dinner & Dance  
150 - 270



Banquet Dinner  
170 - 280



Cocktail Party  
100 - 500



Theatre Seating  
100 - 400

FOR OFFICIAL USE

Event Name

Event Date

Please indicate on your floorplan additional requirements eg. band, photobooth, etc. These are subject to approval by your event stylist and coordinator.