

CONCA D'ORO

THE CLASSIC BALLROOM

FACT SHEET & FLOOR PLANS

CONCA D'ORO

The Classic Ballroom

NAVARRA

EST 1973



Room Info



Room Specs



AV Specs

CAPACITIES



Dinner & Dance
280 - 510



Banquet Dinner
280 - 550



Cocktail Party
100 - 800



Theatre Seating
100 - 650

FEATURES

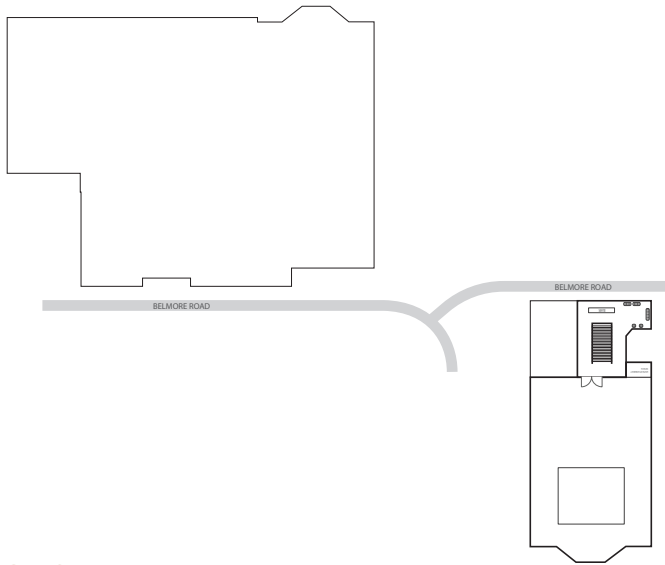
- Grand style event room with luxurious designer fixtures
- Elegant Swarovski chandeliers
- Heightened ceilings and open floor plan
- Welcome drinks area in spacious and grand foyer

CONTACT US

- Conca D'oro
269 Belmore Rd
Riverwood, NSW 2210
- 02 9153 9932
concadoro@navarravenues.com.au
navarravenues.com.au

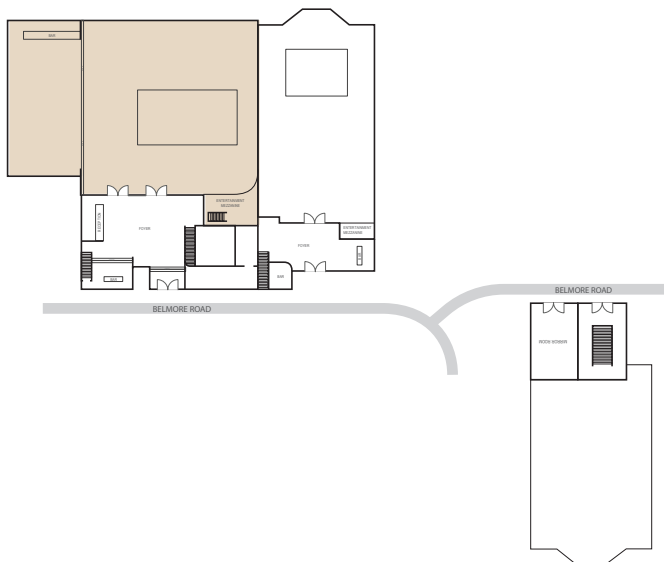
VENUE MAP

LEVEL ONE



GROUND LEVEL

- The Classic Ballroom



ROOM SPECS

■ Ceiling Height
4.1 m

■ Floor Area
430 m²

■ Dance Floor Area
10.5m x 5.65m



Room Info



Room Specs



AV Specs

CAPACITIES



Dinner & Dance
280 - 510



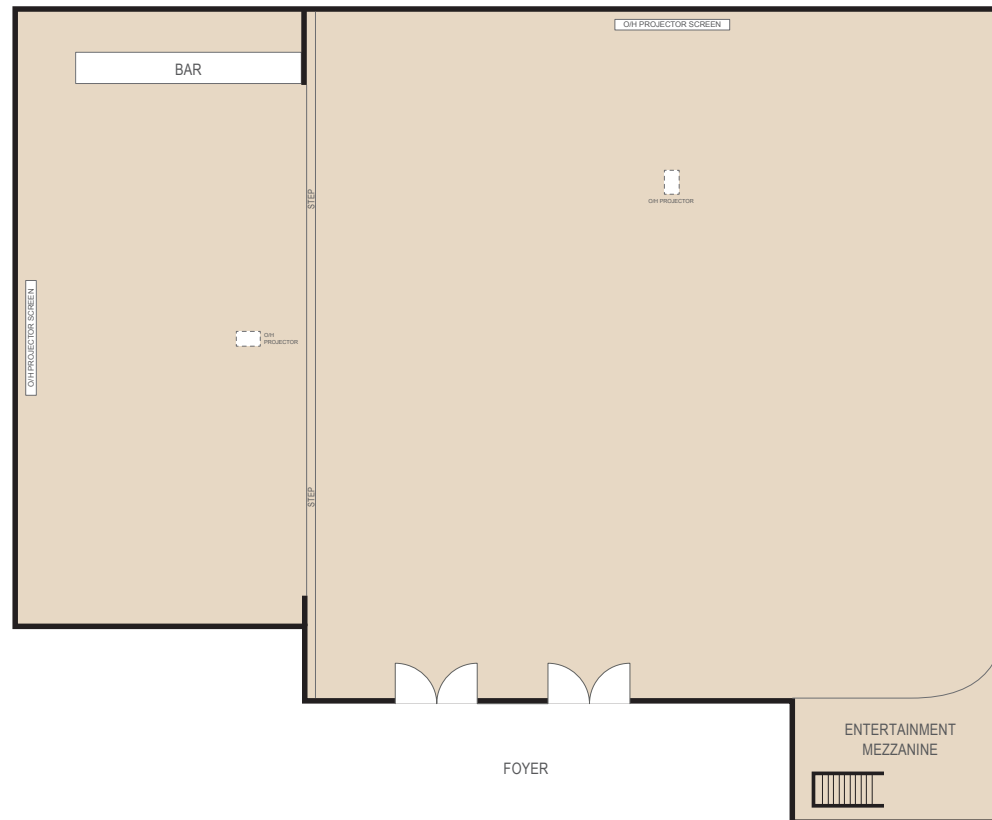
Banquet Dinner
280 - 550



Cocktail Party
100 - 800



Theatre Seating
100 - 650

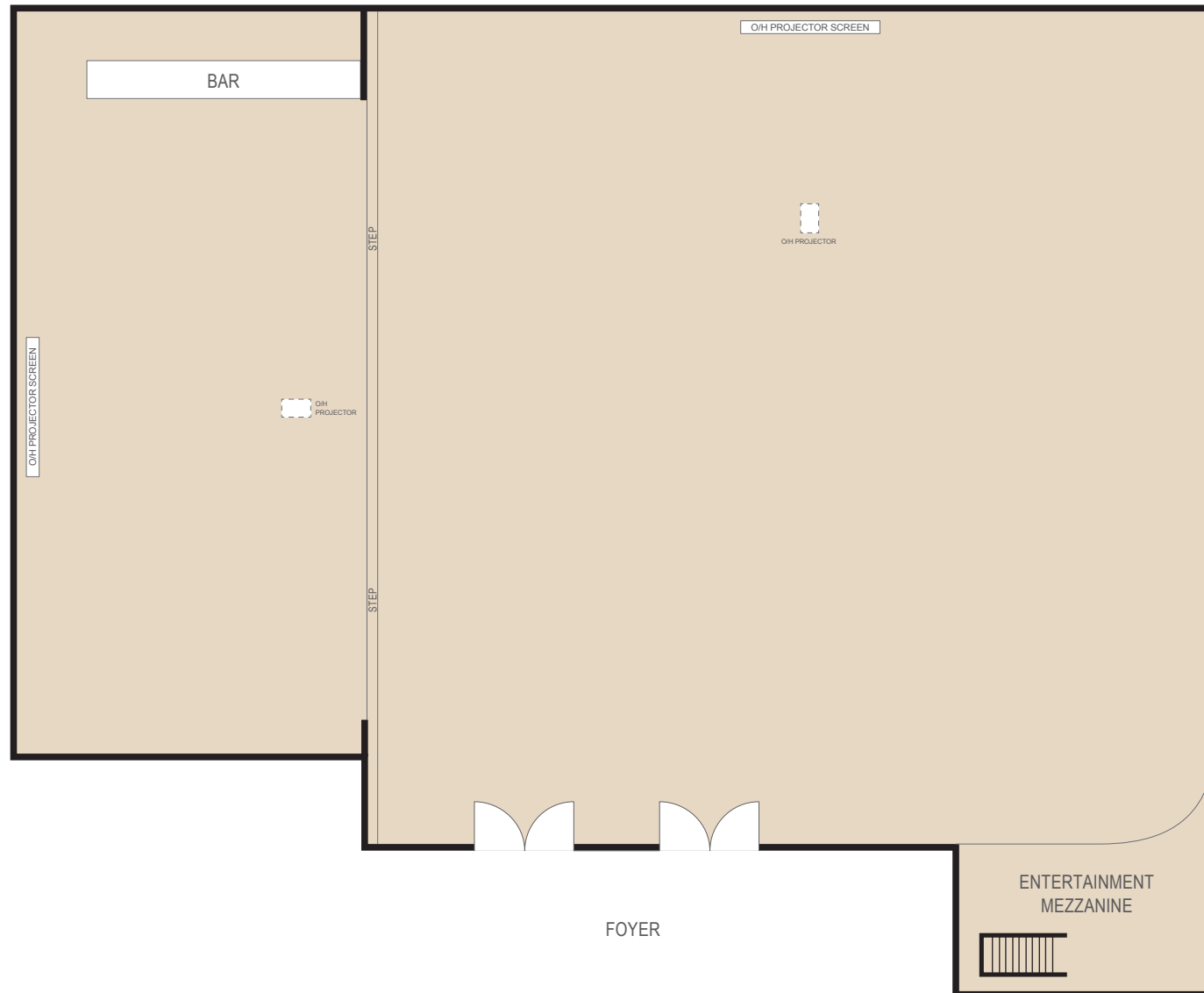


CONCA D'ORO

The Classic Ballroom

NAVARRA

EST 1973



Room Info



Room Specs



AV Specs

CAPACITIES



Dinner & Dance
280 - 510



Banquet Dinner
280 - 550



Cocktail Party
100 - 800



Theatre Seating
100 - 650

The Classic Ballroom

PAX PER TABLE

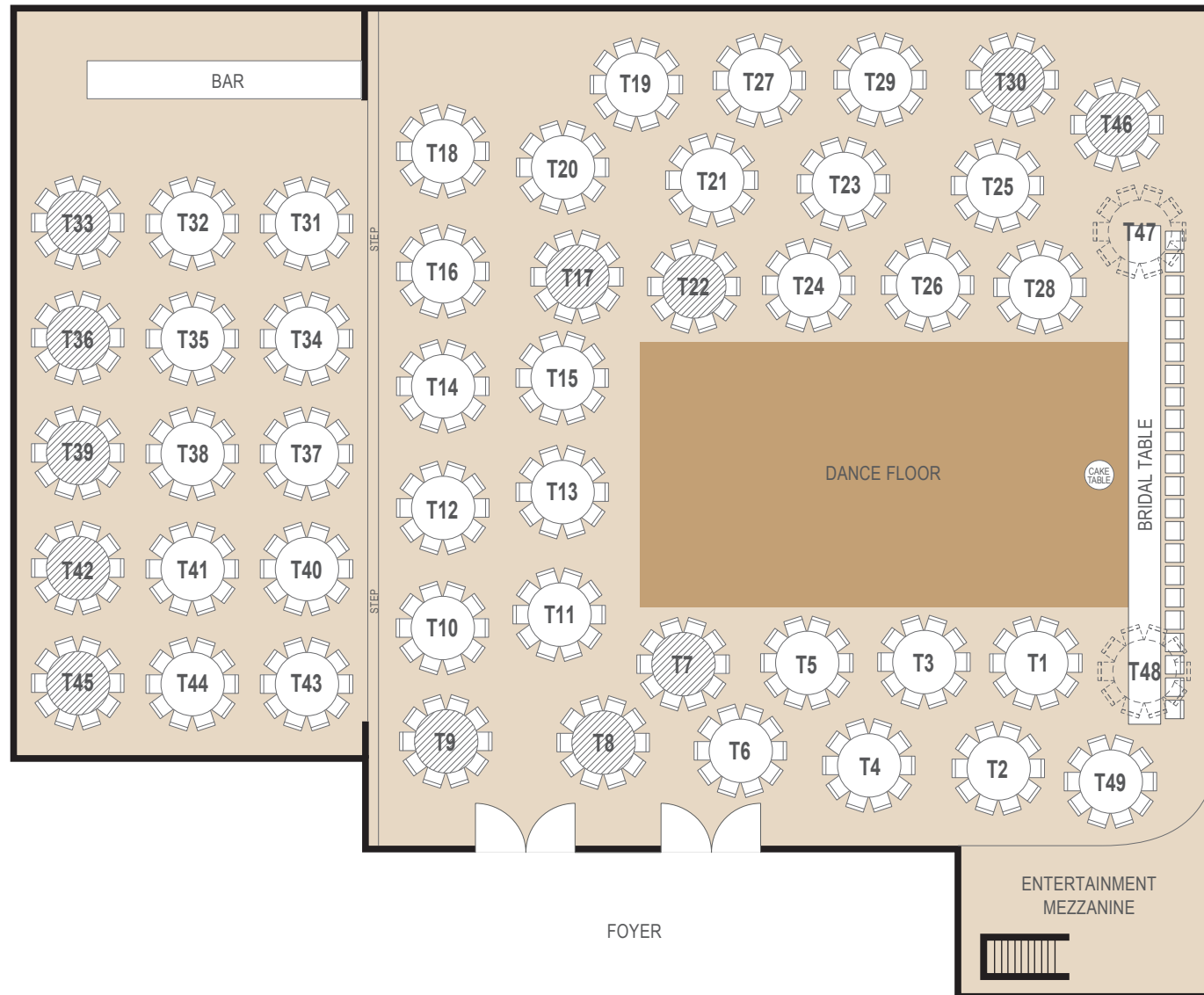
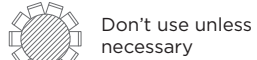
■ Round Tables
8 Min - 10 Max

■ VIP/Bridal Table
22 Max

SUITABLE FOR

■ Weddings
■ Gala Dinners

LEGEND



Room Info



Room Specs



AV Specs

CAPACITIES



Dinner & Dance
280 - 510



Banquet Dinner
280 - 550



Cocktail Party
100 - 800



Theatre Seating
100 - 650

FOR OFFICIAL USE

Event Name

Event Date

Please indicate on your floorplan additional requirements eg. band, photobooth, etc. These are subject to approval by your event stylist and coordinator.

The Classic Ballroom




PAX PER TABLE

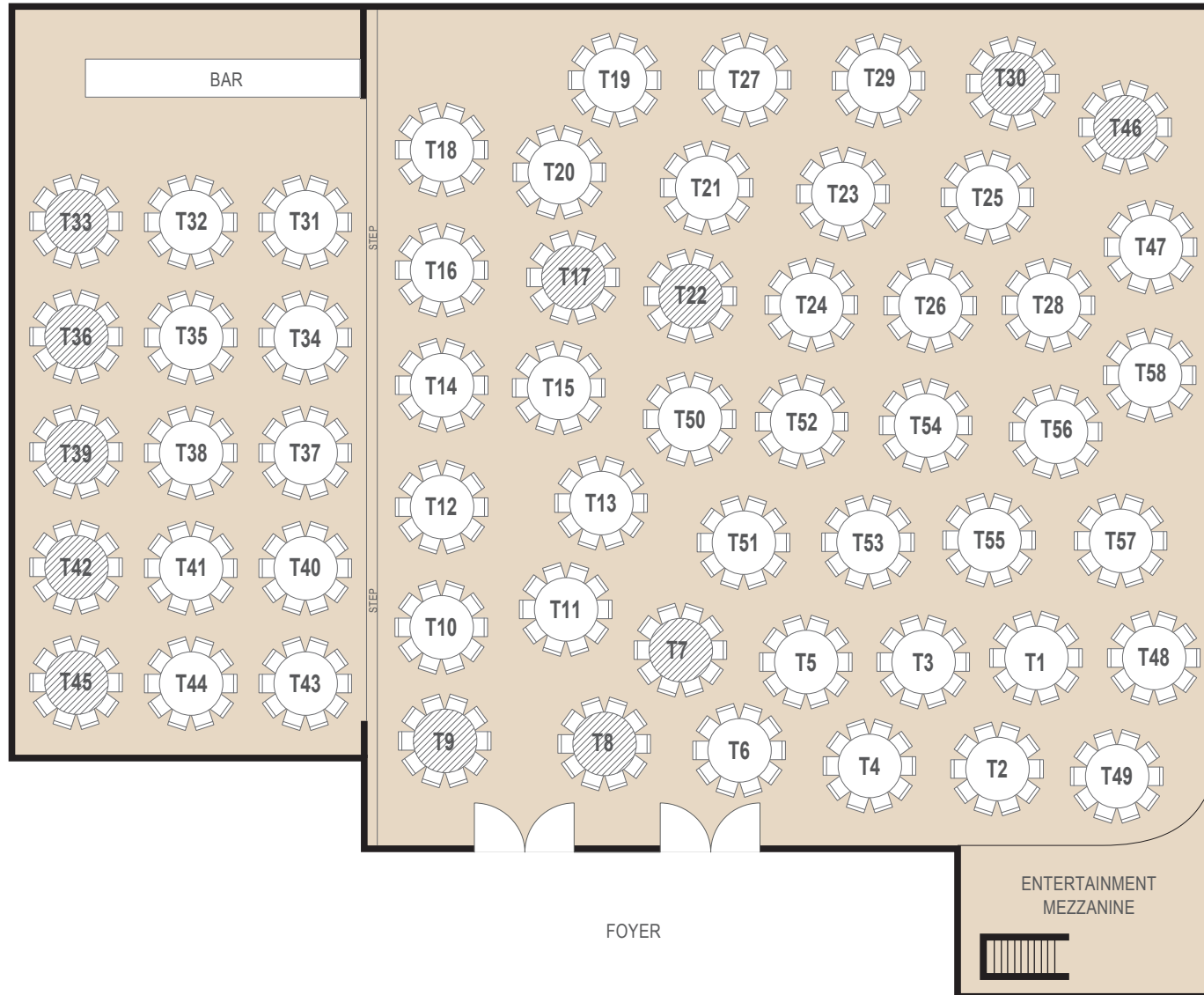
- Round Tables
8 Min - 10 Max

SUITABLE FOR

- Corporate Events

LEGEND

-  Round Table
-  Don't use unless necessary
-  Alternative arrangement using Round Table instead



Room Info



Room Specs



AV Specs

CAPACITIES



Dinner & Dance
280 - 510



Banquet Dinner
280 - 550



Cocktail Party
100 - 800



Theatre Seating
100 - 650

FOR OFFICIAL USE

Event Name

Event Date

Please indicate on your floorplan additional requirements eg. band, photobooth, etc. These are subject to approval by your event stylist and coordinator.

The Classic Ballroom



Room Info



Room Specs



AV Specs

CAPACITIES



Dinner & Dance
280 - 510



Banquet Dinner
280 - 550



Cocktail Party
100 - 800

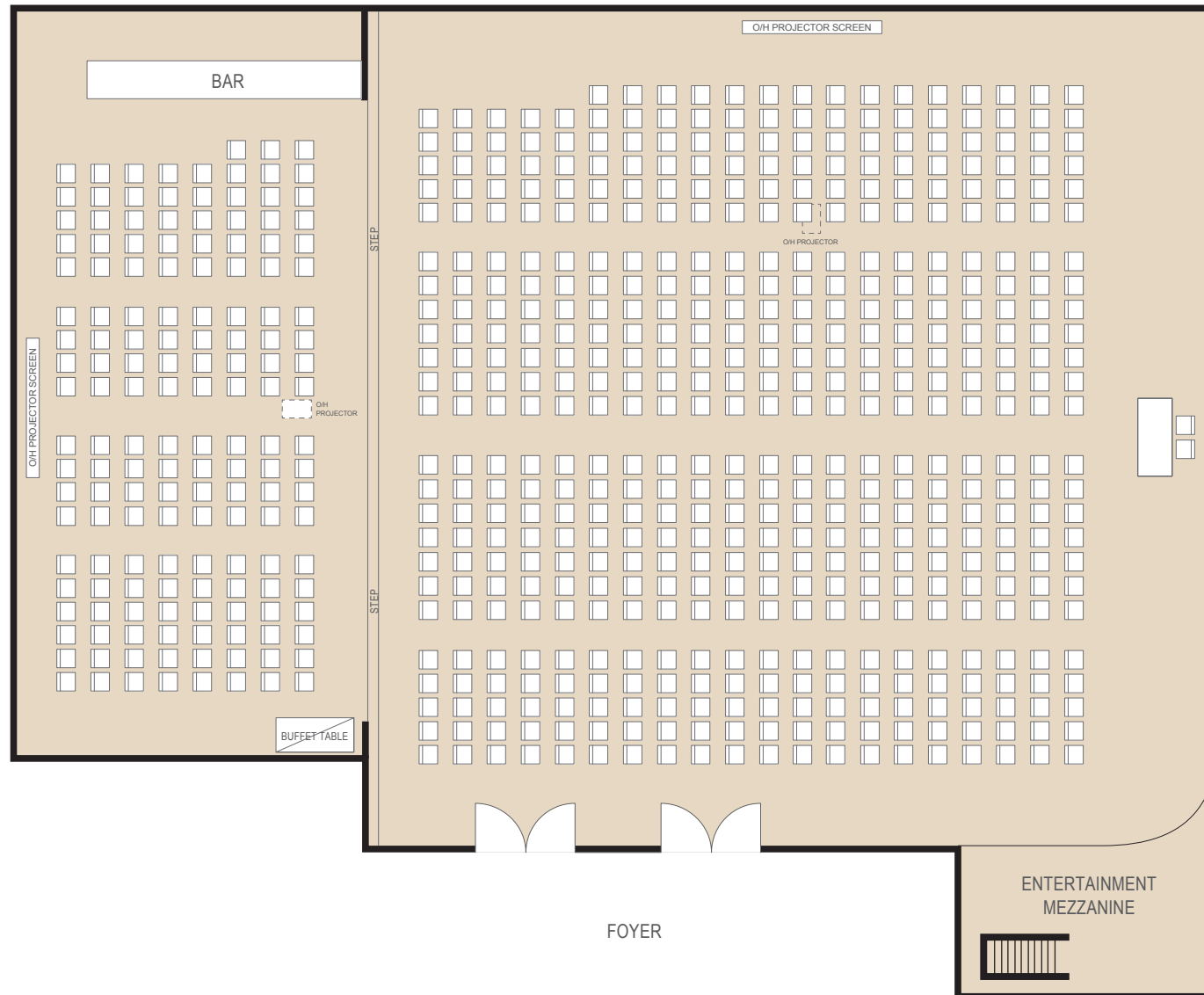


Theatre Seating
100 - 650

FOR OFFICIAL USE	
Event Name	Event Date

Please indicate on your floorplan additional requirements eg. band, photobooth, etc. These are subject to approval by your event stylist and coordinator.

The Classic Ballroom



Room Info



Room Specs



AV Specs

CAPACITIES



Dinner & Dance
280 - 510



Banquet Dinner
280 - 550



Cocktail Party
100 - 800



Theatre Seating
100 - 650

FOR OFFICIAL USE

Event Name

Event Date

Please indicate on your floorplan additional requirements eg. band, photobooth, etc. These are subject to approval by your event stylist and coordinator.